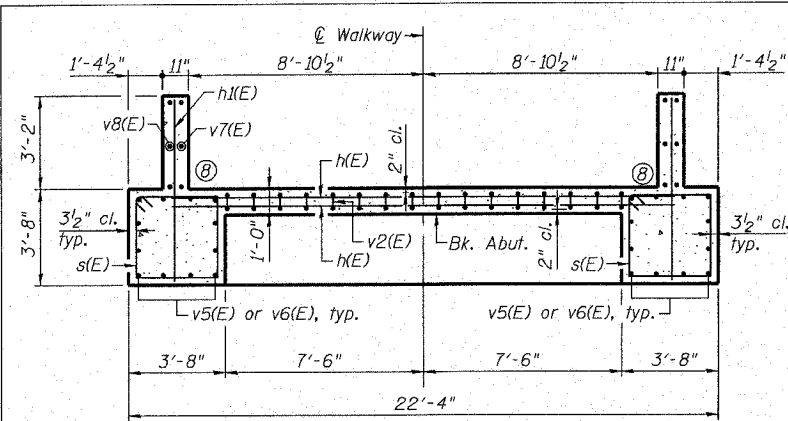


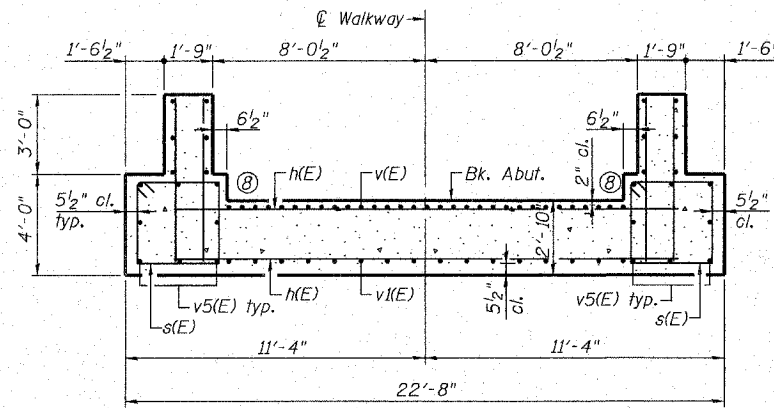
BILL OF MATERIAL

(North Abutment and wingwalls)

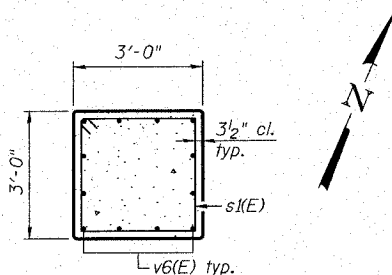
Bar	No.	Size	Length	Shape
h(E)	39	#5	19'-0"	—
h1(E)	70	#5	6'-6"	—
n(E)	19	#8	6'-9"	└
n1(E)	16	#6	4'-9"	└
n2(E)	24	#6	4'-5"	└
n3(E)	12	#5	4'-3"	└
s(E)	38	#4	13'-1"	□
s1(E)	18	#4	10'-5"	□
t(E)	14	#5	23'-4"	—
t1(E)	6	#5	20'-5"	—
v(E)	19	#8	13'-8"	—
v1(E)	16	#6	13'-8"	—
v2(E)	16	#5	7'-6"	—
v3(E)	16	#5	7'-10"	└
v4(E)	16	#5	2'-8"	└
v5(E)	24	#6	18'-3"	—
v6(E)	24	#6	10'-10"	—
v7(E)	6	#5	13'-8"	—
v8(E)	6	#5	18'-5"	—
v9(E)	6	#5	6'-8"	└
w(E)	42	#6	8'-8"	—
w1(E)	8	#6	6'-2"	—
Structure Excavation			Cu. Yd.	148
Rock Excavation for Structures			Cu. Yd.	4
Concrete Structures			Cu. Yd.	72.3
Reinforcement Bars, Epoxy Coated			Pound	6,080



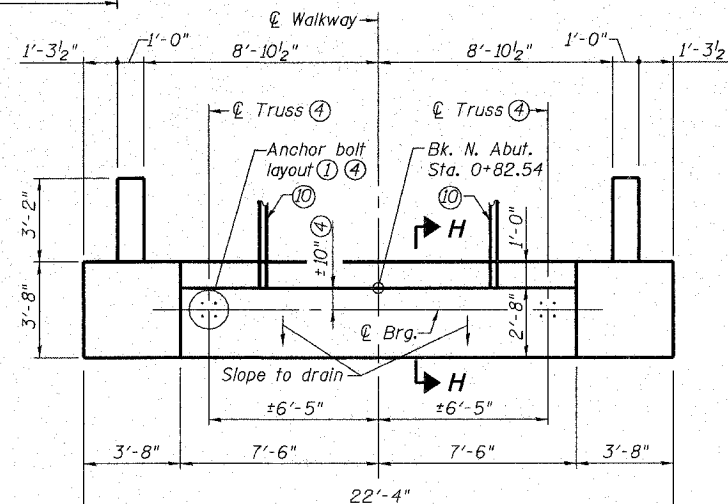
SECTION A-A



SECTION B-B

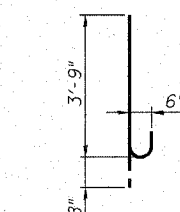


SECTION C-C

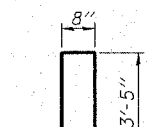


ABUTMENT PLAN

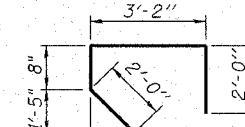
(Foundation & columns not shown for clarity)



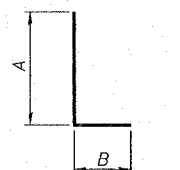
BAR n2(E)



BAR v2(E)



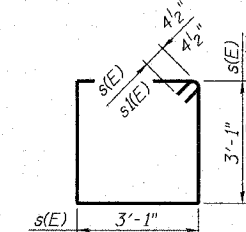
BAR v3(E)



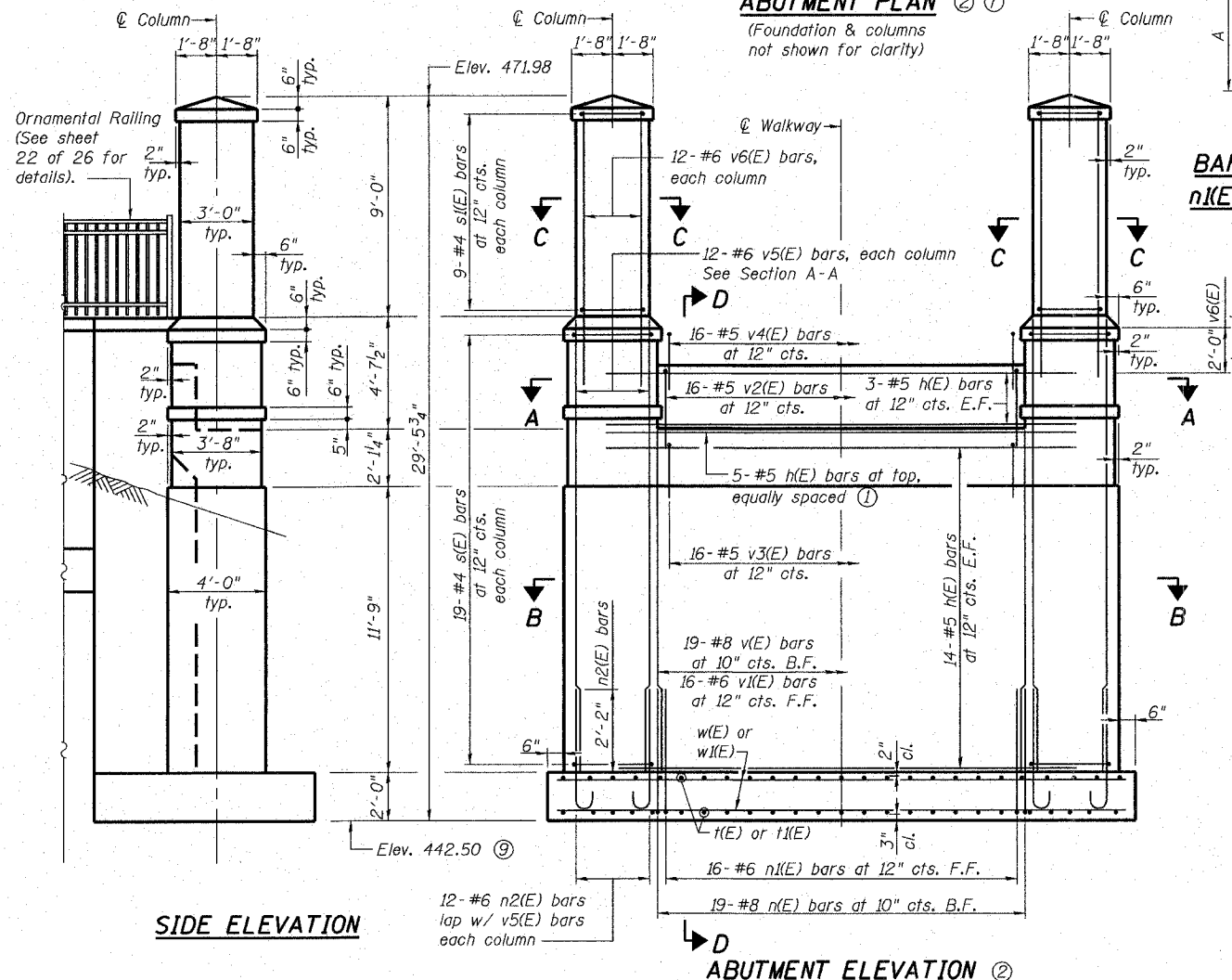
BARS h(E), n(E), n1(E), n3(E), v4(E) & v9(E)

A & B DIMENSIONS

Bar	A	B
n(E)	5'-5"	1'-4"
n1(E)	3'-9"	1'-0"
n3(E)	3'-5"	10"
v4(E)	1'-10"	10"
v9(E)	6'-0"	8"

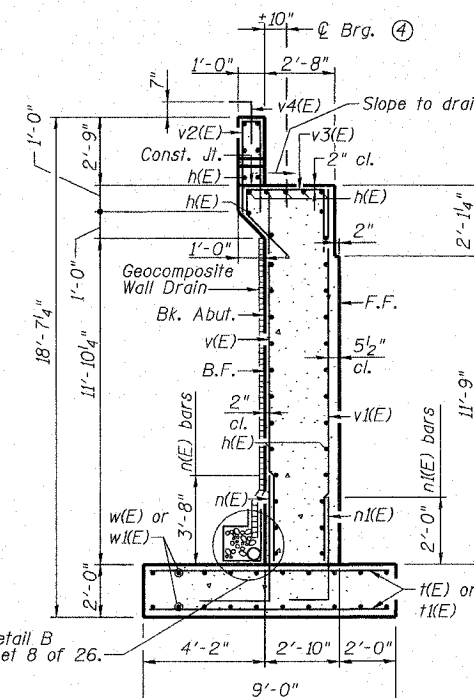


BARS s(E) & s1(E)



SIDE ELEVATION

ABUTMENT ELEVATION



SECTION D-D

- Notes:
- Space reinforcement in cap to miss anchor bolts.
 - For details of foundation, see sheet 8 of 26.
 - See sheet 11 of 26 for limits of Form Liner Textured Surface and Rubbed Finish.
 - Final truss, ϕ brg, bearings, anchor bolt sizes, embedment, and layout to be determined by truss manufacturer. Pre-engineered truss shop drawings shall be approved prior to construction of the piers. Contractor shall verify all dimensions and elevations with final approved shop drawings. See special provisions.
 - All edges shall have 1/2" chamfer unless noted otherwise.
 - B.F. denotes back face. F.F. denotes front face. E.F. denotes each face.
 - Architectural bumpouts on columns not shown for clarity in plan view. Dimensions to face of column at abutment seat.
 - For details of wingwalls, corner bars and Section H-H, see sheet 8 of 26.
 - The bottom of footing elevation shall be adjusted to ensure a minimum embedment of 6 inches in non-weathered rock. The rock excavation shall be made with near-vertical sides at the plan dimensions to allow the sides and base of the embedded portion of the footing to be cast against undisturbed rock surfaces.
 - Electrical conduit to be cast through abutment backwall. See electrical plans for details.

NORTH ABUTMENT PLAN
ALTON PEDESTRIAN WALKWAY OVER
UNION PACIFIC RAILROAD, NORFOLK
SOUTHERN RAILROAD AND US ROUTE 67
SECTION 06-00224-00-BR
MADISON COUNTY
STA. 2+42.54
STRUCTURE NO. 060-6111

REVISIONS

No.	Description

Support Business Center 1
 100 Lantz Court, Suite 1
 California, Illinois 62234
 Phone: 618 342-2200
 Fax: 618 342-2200
 www.oatesassociates.com

OATES ASSOCIATES
 Consulting Engineers

ALTON, ILLINOIS
PEDESTRIAN OVERPASS AT LANGDON ST.