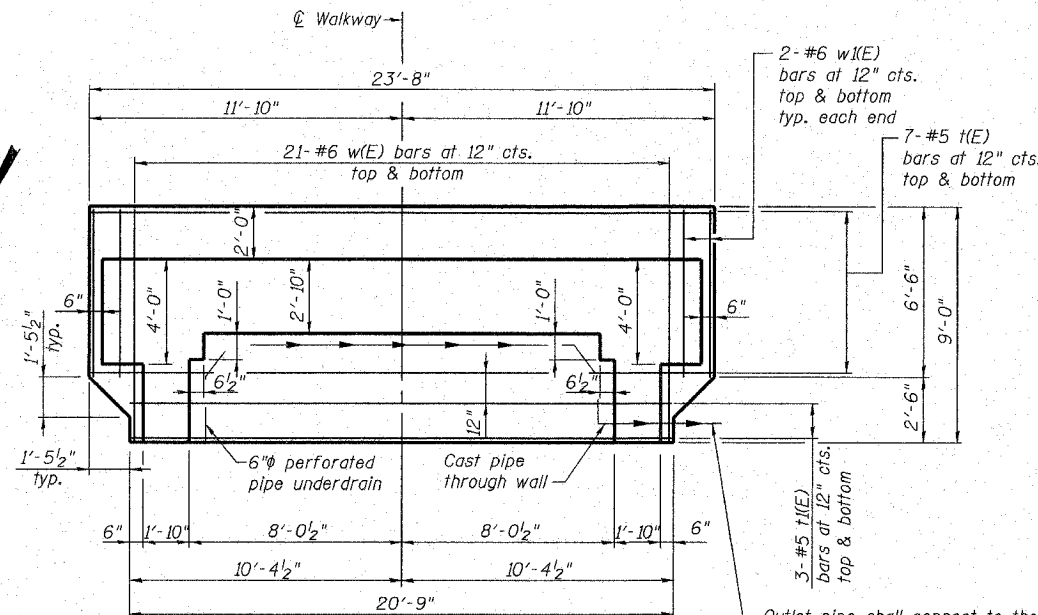
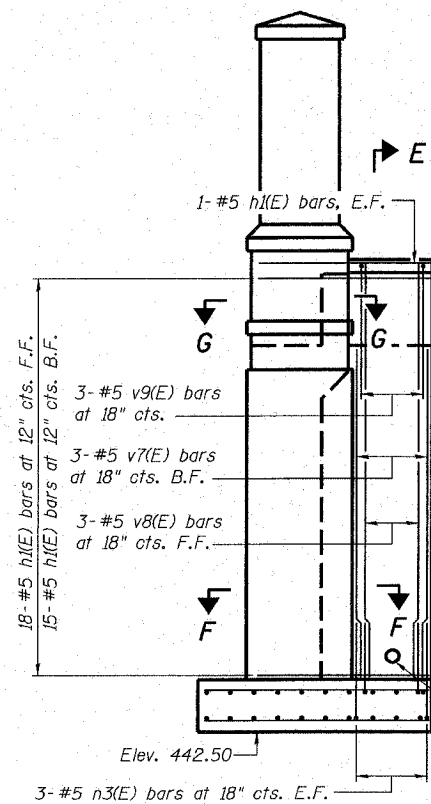


SECTION E-E

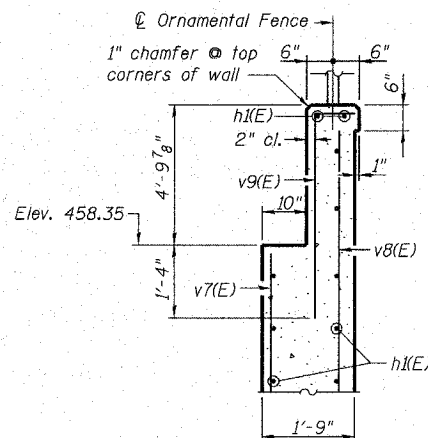


FOOTING PLAN

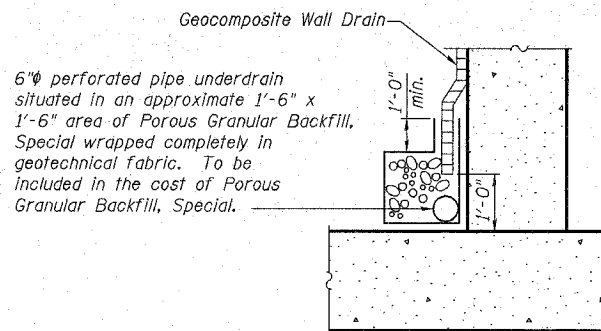
Outlet pipe shall connect to the storm sewer drain discharging into the sewer line. The drain pipe shall connect into the top of the storm sewer line to prevent backup of the storm drainage into the pipe underdrains. Provisions shall be made to allow the connection of the pipe underdrains from the retaining walls located north of the abutment. See sheet 9 of 26.



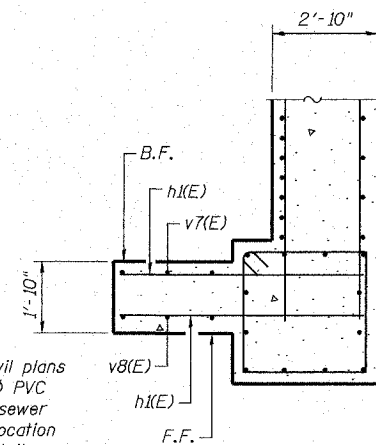
WINGWALL ELEVATION
(East wall shown, west wall sim.)



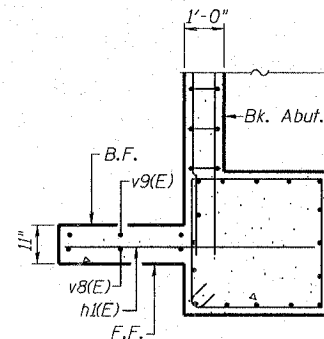
DETAIL A



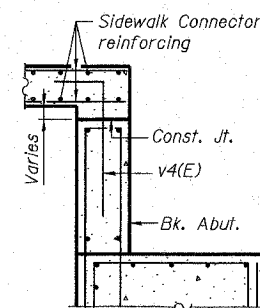
DETAIL B



SECTION F-F ⑤
West wingwall shown.
East wingwall opp. hand.



SECTION G-G ⑤
West wingwall shown.
East wingwall opp. hand.



SECTION H-H

- Notes:
- See sheet 7 of 26 for Bill of Materials and bar bending details.
 - See sheet 11 of 26 for limits of Form Liner Textured Surface and Rubbed Finish.
 - All edges shall have 1/2" chamfer unless noted otherwise.
 - B.F. denotes back face.
F.F. denotes front face.
E.F. denotes each face.
 - For details of abutment and columns, see sheet 7 of 26.
 - Space reinforcement in wall cap to avoid fence inserts.

NORTH ABUTMENT DETAILS
ALTON PEDESTRIAN WALKWAY OVER
UNION PACIFIC RAILROAD, NORFOLK
SOUTHERN RAILROAD AND US ROUTE 67
SECTION 06-00224-00-BR
MADISON COUNTY
STA. 2+42.54
STRUCTURE NO. 060-6111

NO.	DESCRIPTION

Expert Business Center /
100 Lantz Court, Suite 1
Columbia, Illinois 62224
Phone: 618 345-2200
Fax: 618 345-7213
e-mail: cates@csassociates.com
web-site: www.csassociates.com

CATES ASSOCIATES
Consulting Engineers

ALTON, ILLINOIS
PEDESTRIAN OVERPASS AT LANGDON ST.