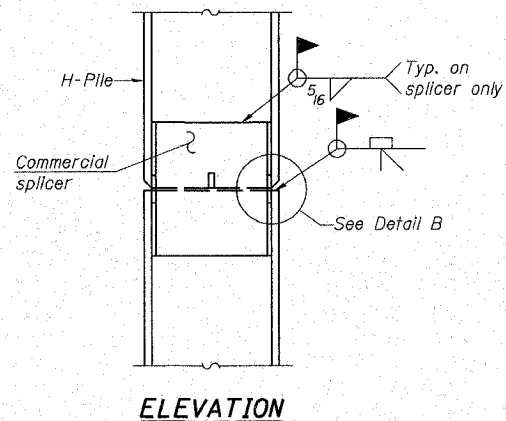
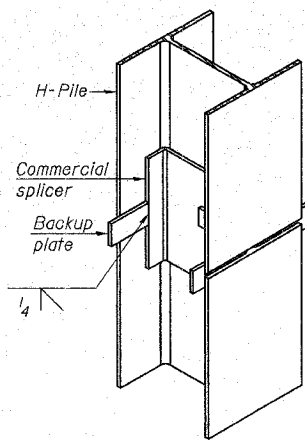


STEEL PILE TABLE

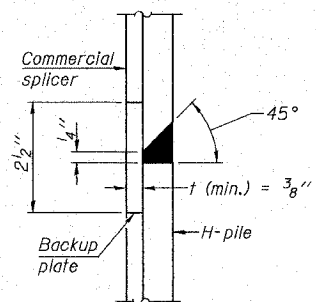
| Designation | Depth <i>d</i> | Flange width <i>b_f</i> | Web and Flange thickness <i>t</i> | Encasement diameter <i>A</i> |
|-------------|-------------------|---|--|------------------------------------|
| HP 14x117 | 14 1/4" | 14 7/8" | 1 5/16" | 30" |
| x102 | 14" | 14 3/4" | 1 1/16" | 30" |
| x89 | 13 7/8" | 14 3/4" | 5/8" | 30" |
| x73 | 13 5/8" | 14 5/8" | 1/2" | 30" |
| HP 12x84 | 12 1/4" | 12 1/4" | 1 1/16" | 24" |
| x74 | 12 1/8" | 12 1/4" | 5/8" | 24" |
| x63 | 12" | 12 1/8" | 1/2" | 24" |
| x53 | 11 3/4" | 12" | 7/16" | 24" |
| HP 10x57 | 10" | 10 1/4" | 9/16" | 24" |
| x42 | 9 3/4" | 10 1/8" | 1/16" | 24" |
| HP 8x36 | 8" | 8 1/8" | 7/16" | 18" |



ELEVATION

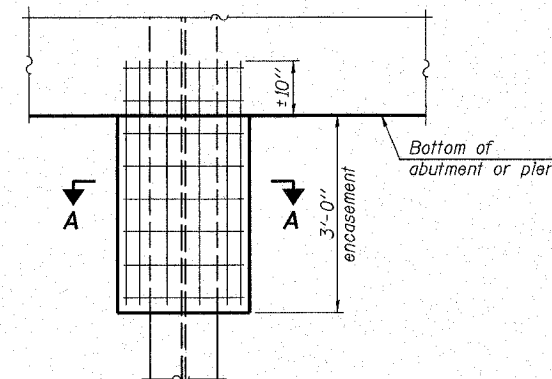


ISOMETRIC VIEW



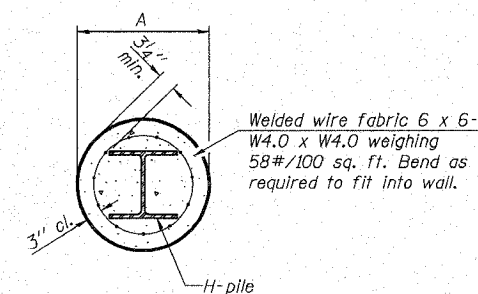
DETAIL "B"

WELDED COMMERCIAL SPLICE



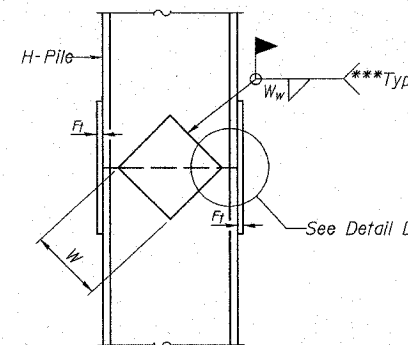
ELEVATION

PILE ENCASEMENT

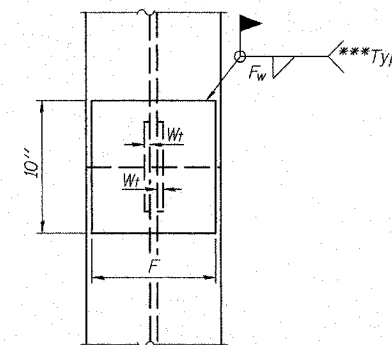


SECTION A-A

Note:
Forms for encasement may be omitted when soil conditions permit.

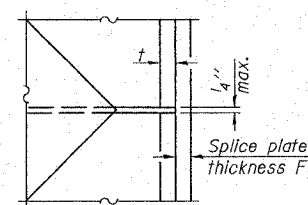


ELEVATION



END VIEW

| Designation | F | F _t | F _w | W | W _t | W _w |
|-------------|---------|----------------|----------------|--------|----------------|----------------|
| HP 14x117 | 12 1/2" | 1" | 7/8" | 7 3/4" | 5 1/2" | 1 1/2" |
| x102 | 12 1/2" | 7/8" | 3/4" | 7 3/4" | 5 1/2" | 1 1/2" |
| x89 | 12 1/2" | 3/4" | 1/16" | 7 3/4" | 5 1/2" | 1 1/2" |
| x73 | 12 1/2" | 5/8" | 9/16" | 7 3/4" | 5 1/2" | 1 1/2" |
| HP 12x84 | 10" | 7/8" | 1/16" | 6 1/2" | 5 1/2" | 1 1/2" |
| x74 | 10" | 7/8" | 1/16" | 6 1/2" | 5 1/2" | 1 1/2" |
| x63 | 10" | 5/8" | 1/2" | 6 1/2" | 1 1/2" | 3/8" |
| x53 | 10" | 5/8" | 1/2" | 6 1/2" | 1 1/2" | 3/8" |
| HP 10x57 | 8" | 3/4" | 9/16" | 5 1/4" | 1 1/2" | 3/8" |
| x42 | 8" | 5/8" | 9/16" | 5 1/4" | 1 1/2" | 3/8" |
| HP 8x36 | 7" | 5/8" | 7/16" | 4 1/4" | 1 1/2" | 3/8" |



DETAIL D

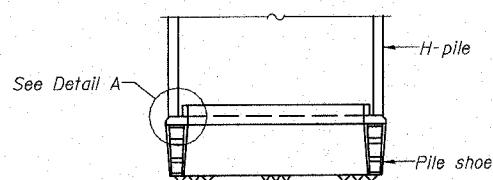
WELDED PLATE FIELD SPLICE

Note:
The steel H-piles shall be according to AASHTO M270 Grade 50.

*Use joint conforming to Figure 3.4 in AWS D1.1, Structure Welding Code - Steel.

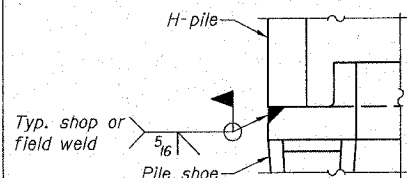
**Preparation per Fig. 5.2 in AWS D1.1, Structure Welding Code - Steel.

***Interrupt welds 1/4" from end of each pile.

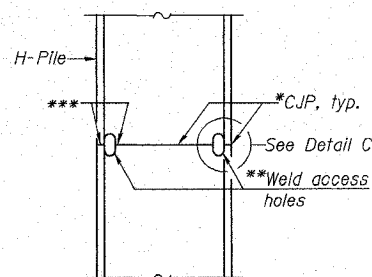


ELEVATION

H-PILE SHOE ATTACHMENT

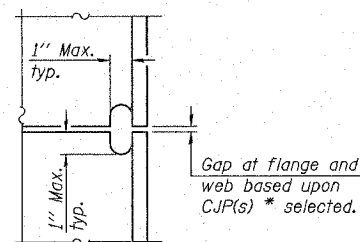


DETAIL A



ELEVATION

COMPLETE PENETRATION WELD SPLICE



DETAIL C

PILE DETAILS

**ALTON PEDESTRIAN WALKWAY OVER
UNION PACIFIC RAILROAD, NORFOLK
SOUTHERN RAILROAD AND US ROUTE 67
SECTION 06-00224-00-BR
MADISON COUNTY
STA. 2+42.54
STRUCTURE NO. 060-6111**

| NO. | DESCRIPTION |
|-----|-------------|
| | |
| | |
| | |

Eastport Business Center 1
100 Lerner Court, Suite 1
Collingsville, Illinois 62224
Phone: 618-345-2500
www.gatesassociates.com

GATES ASSOCIATES
Consulting Engineers

**ALTON, ILLINOIS
PEDESTRIAN OVERPASS AT LANGDON ST.**

| | |
|----------|----------|
| DWG. NO. | S21 |
| REF. BK. | PG. |
| JOB NO. | 26053 |
| DSN. BY: | JCS |
| DWN. BY: | JCS |
| CHK. BY: | DCL |
| DATE: | 3/28/08 |
| SCALE: | |
| SHEET | 41 OF 54 |