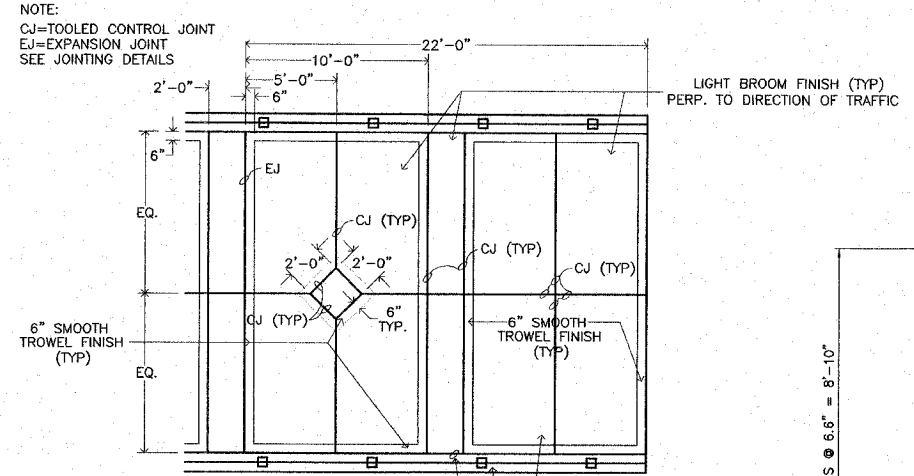


NOTE:
CJ=TOOLED CONTROL JOINT
EJ=EXPANSION JOINT

NOTES:
1. CONTROL & EXPANSION JOINTS ARE TO BE SPACED ACCORDINGLY WITH THE WIDTH OF THE SIDEWALK. SEE THIS SHEET FOR JOINTING STANDARDS.
2. EXPANSION JOINTS ARE NOT TO EXCEED 36' SPACINGS

DETAIL: Typical P.C.C. Walk (10' Width)-Plan
Not to Scale

TO BE USED: PORTLAND CEMENT CONCRETE SIDEWALK 4 INCH, SPECIAL

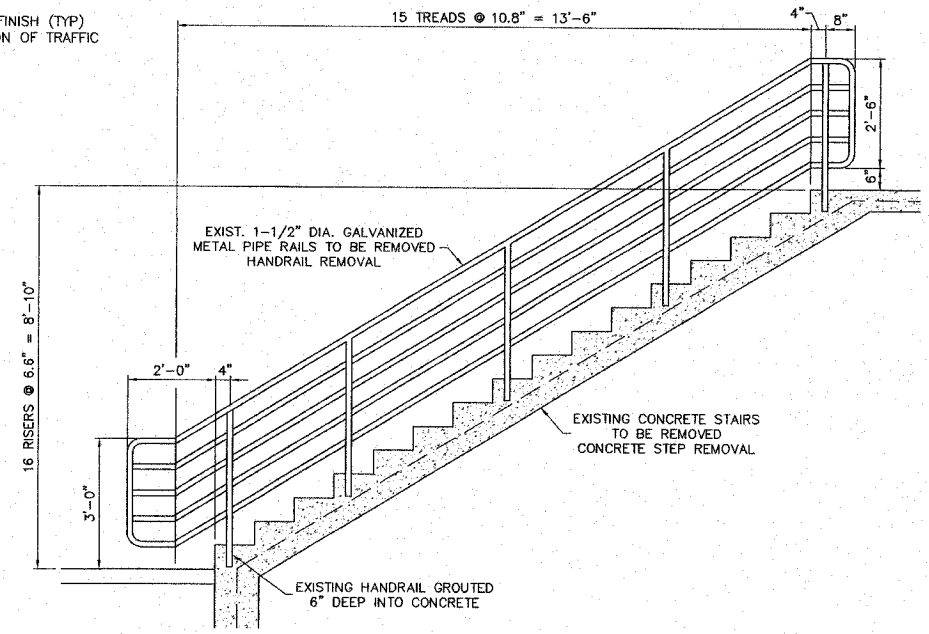


NOTE:
CJ=TOOLED CONTROL JOINT
EJ=EXPANSION JOINT
SEE JOINTING DETAILS

NOTES:
1. CONTROL & EXPANSION JOINTS ARE TO BE SPACED ACCORDINGLY WITH THE WIDTH OF THE SIDEWALK. SEE JOINTING DETAILS.
2. EXPANSION JOINTS ARE NOT TO EXCEED 24' SPACINGS AND SHOULD BE LOCATED ON 2'-0" BAND.

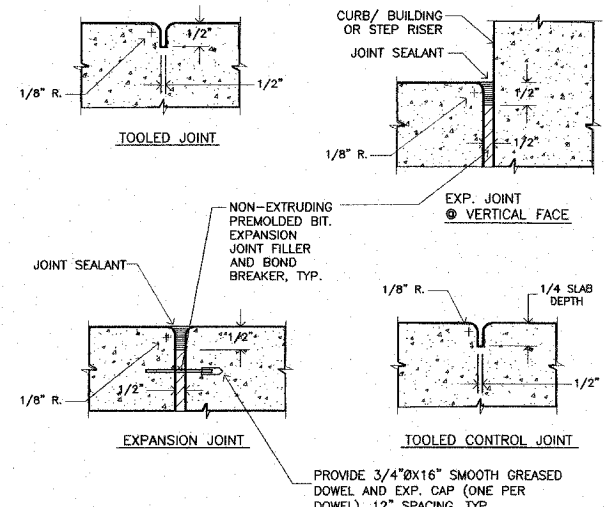
DETAIL: Typical P.C.C. Walk (Bridge Approaches)-Plan
Not to Scale

TO BE USED: PORTLAND CEMENT CONCRETE SIDEWALK 6 INCH, SPECIAL

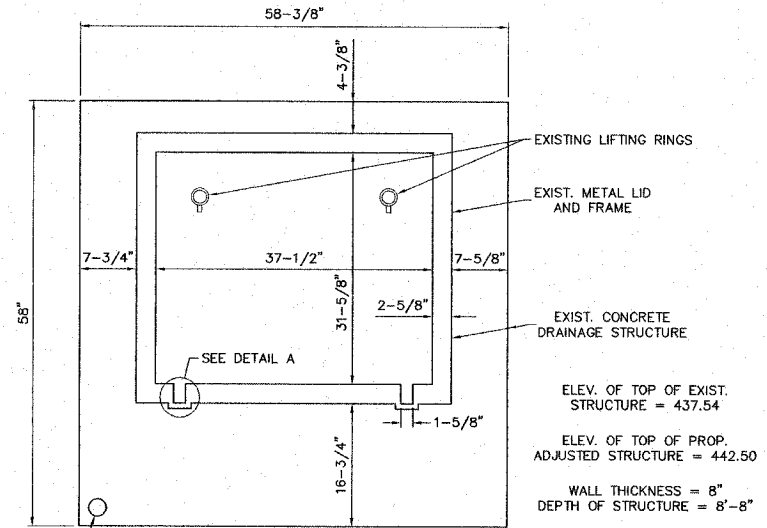


DETAIL: Concrete Step Removal Handrail Removal
Scale: 1/2" = 1'-0"

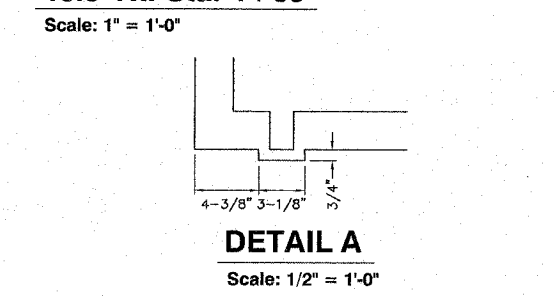
NOTES:
1. THE WIDTH OF THE EXIST. CONC. STAIRS IS 8 FT.
2. THE EXIST. PIPE HANDRAIL 26' RT. STA. 0+79.50 TO STA. 0+94.50 CONSISTS OF TWO RAILS WITH POSTS EMBEDDED IN THE EXIST. CONC. STAIRS. THESE SHALL BE REMOVED AND PAID FOR AS HANDRAIL REMOVAL.
3. THE EXIST. PIPE HANDRAIL 27' RT. STA. 0+79.50 TO STA. 0+94.50 SHALL REMAIN IN PLACE.
4. THE BOLTED CONNECTION BETWEEN THE HANDRAIL AT 26' RT. STA. 0+79.50 AND 27' RT. STA. 0+79.50 SHALL BE REMOVED. THE CONNECTION CONSISTS OF 2 RAILS. THIS WORK SHALL BE PAID FOR AS HANDRAIL REMOVAL.



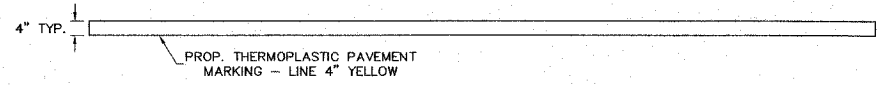
DETAIL: P.C.C. Jointing
Not to Scale



DETAIL: Structures To Be Adjusted
46.5' Rt. Sta. 4+69
Scale: 1" = 1'-0"



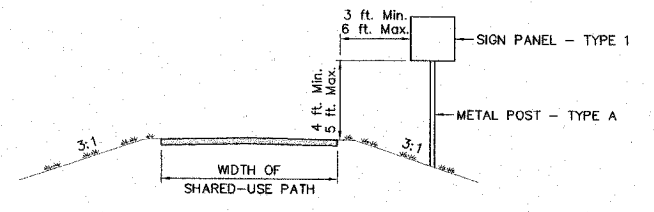
NOTES:
1. THE CONTRACTOR SHALL REMOVE THE FRAME AND LID AND USE IN ADJUSTED STRUCTURE.
2. THE CONTRACTOR SHALL REMOVE THE TOP OF THE STRUCTURE IN SUCH A METHOD TO USE THE EXISTING VERTICAL REINFORCEMENT. THE CONTRACTOR SHALL SPLICE NEW REINFORCEMENT TO THE EXISTING REINFORCEMENT TO ADJUST THE STRUCTURE TO THE PROPOSED ELEVATION. THE CONTRACTOR SHALL PLACE NEW REINFORCEMENT BARS IN THE TOP OF THE SLAB TO THE SIZE AND SPACING AS THE EXISTING. CLASS SI CONCRETE SHALL BE USED.
3. THIS WORK SHALL INCLUDE ALL LABOR, EQUIPMENT AND MATERIALS TO ADJUST THE STRUCTURE TO THE PROPOSED GRADE.
4. THIS WORK SHALL BE PAID FOR AS STRUCTURES TO BE ADJUSTED.



DETAIL: Pavement Marking, Relocated Bike Trail
Not to Scale

TO BE USED: STA. 0+30 TO STA. 0+86
STA. 0+96 TO STA. 1+50

NOTE: DO NOT STRIPE ACROSS CONCRETE SIDEWALK



DETAIL: Sign Placement on Shared-Use Paths TO BE USED: Bike Trail Relocation
Not to Scale

REVISIONS

SMS Sheppard, Morgan & Schwaab, Inc.
CONSULTING ENGINEERS AND LAND SURVEYORS
215 Market Street, P.O. Box 1, Alton, IL 62002 618/692-0185 E-mail: sms@smsengineers.com
10 Central Industrial Drive, Granite City, IL 62040 618/877-5070 E-mail: mgs@smsengineers.com
DESIGN FIRM # 184-000992

ALTON, ILLINOIS
PEDESTRIAN OVERPASS AT LANGDON ST.
DETAILS