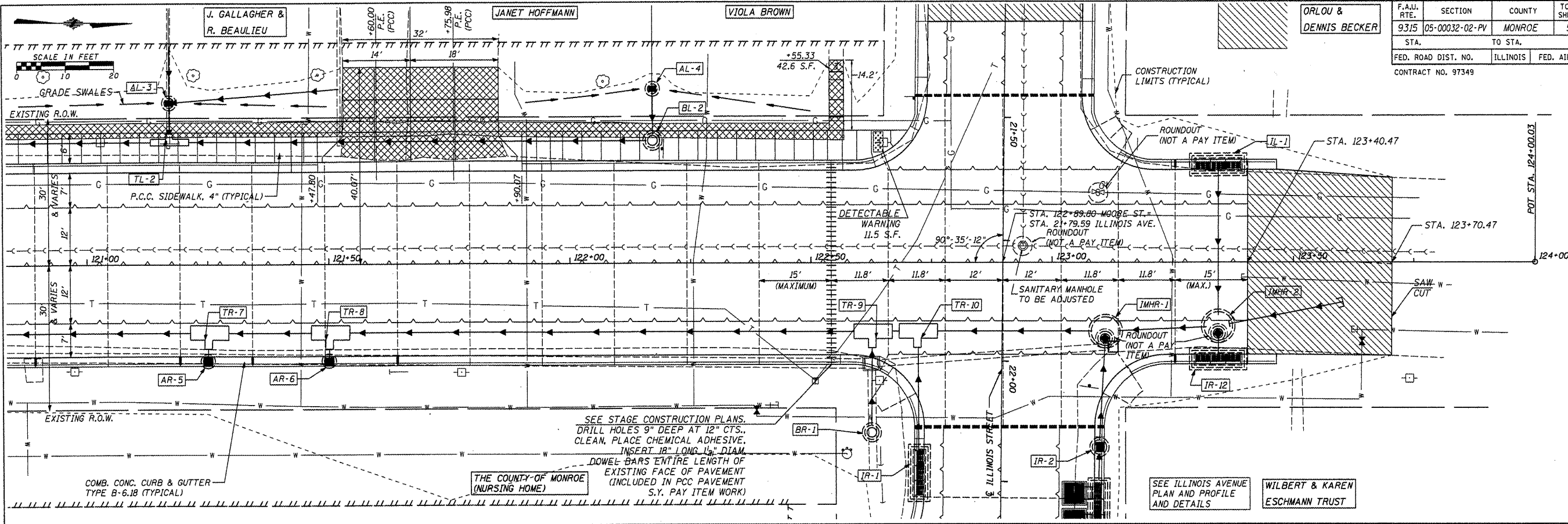
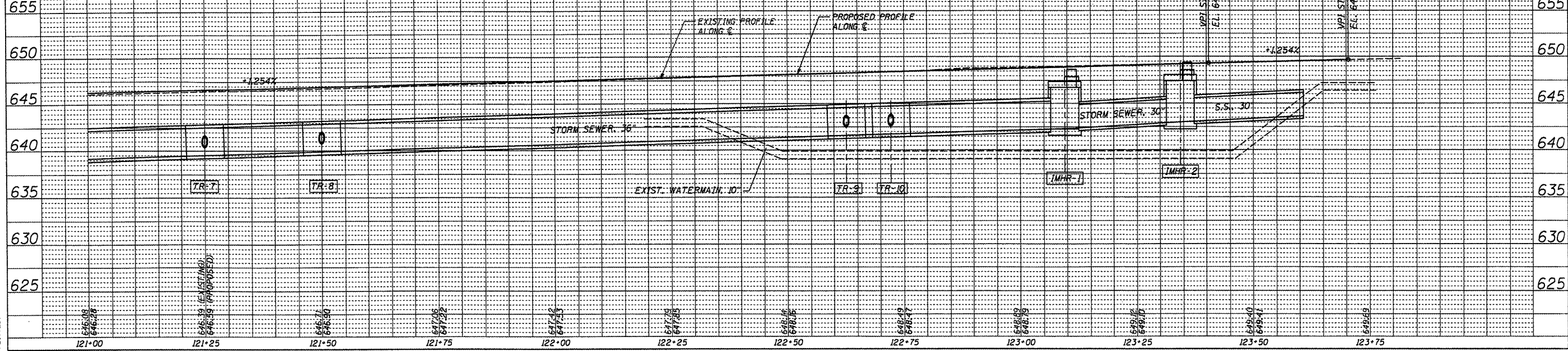


F.A.U. RTE.	SECTION	COUNTY	TOTAL SHEETS	SHEET NO.
9315	05-00032-02-PV	MONROE	55	15
STA.	TO STA.			
FED. ROAD DIST. NO.	ILLINOIS	FED. AID PROJECT		
CONTRACT NO. 97349				



LEGEND

TT TT TT	TEMPORARY CONSTRUCTION EASEMENT	---	SAWED JOINT WITH NO TIE BARS OR DOWELS
[Cross-hatched]	SIDEWALK OR PAVEMENT REMOVAL	---	TRANSVERSE EXPANSION JOINT
---	LONGITUDINAL SAWED OR CONSTR. JOINT	[Diagonal lines]	HMA SURFACING
---	TRANSVERSE CONTRACTION JOINT	[Dotted]	AGGREGATE SURFACE COURSE, TY. A, 8"



PLAN

DATE: _____ BY: _____

REVISIONS:

NO. 1: _____

NO. 2: _____

NO. 3: _____

PROFILE

DATE: _____ BY: _____

REVISIONS:

NO. 1: _____

NO. 2: _____

NO. 3: _____

HENRY, MEISENHEIMER & GENDE, INC. 1075 LAKE ROAD CARLYLE, ILLINOIS 62231 (618) 594-3711 STA. 121+00 - STA. 124+00 F.A.P. 9315 (MOORE ST.)

1/4" = 6' & 1/8" = 60'