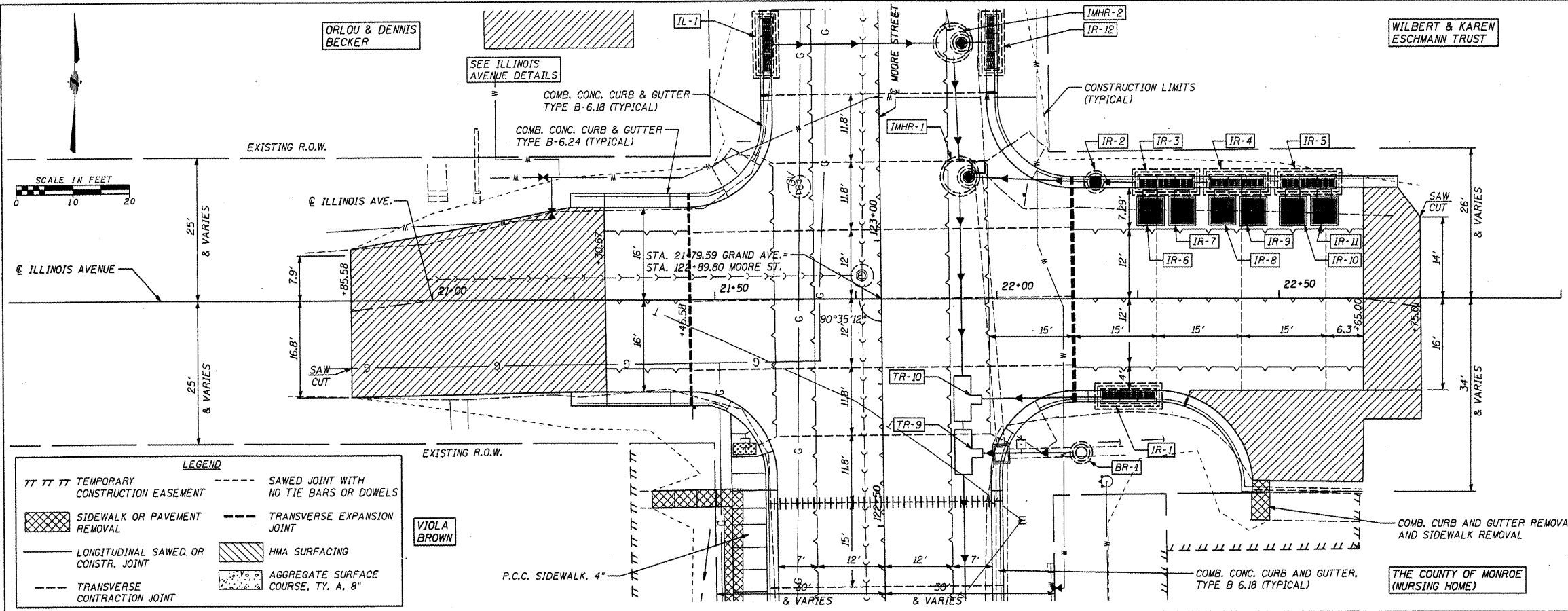


F.A.U. RTE.	SECTION	COUNTY	TOTAL SHEETS	SHEET NO.
9315	05-00032-02-PV	MONROE	55	17
STA.		TO STA.		
FED. ROAD DIST. NO.		ILLINOIS	FED. AID PROJECT	
CONTRACT NO. 97349				



LEGEND

- SAWED JOINT WITH NO TIE BARS OR DOWELS
- TRANSVERSE EXPANSION JOINT
- TRANSVERSE CONTRACTION JOINT
- HMA SURFACING
- AGGREGATE SURFACE COURSE, TYP. A, 8"
- SAWED JOINT WITH TIE BARS OR DOWELS
- TRANSVERSE CONTRACTION JOINT
- HMA SURFACING
- AGGREGATE SURFACE COURSE, TYP. A, 8"

TT TT TT TEMPORARY CONSTRUCTION EASEMENT

--- LONGITUDINAL SAWED OR CONSTR. JOINT

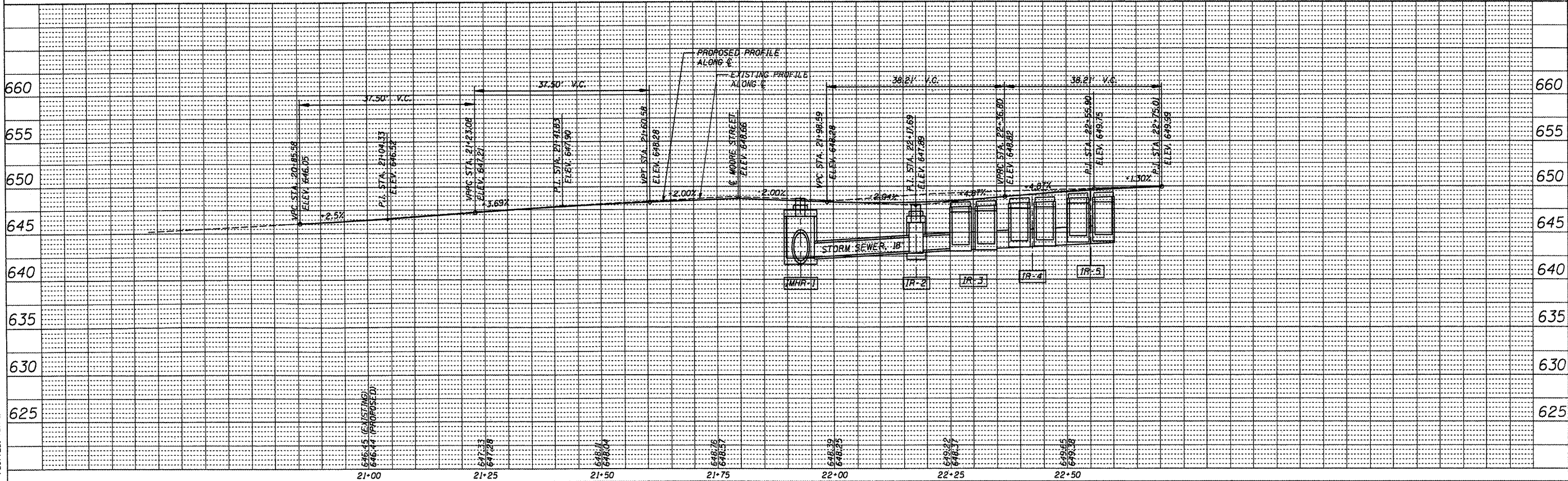
--- TRANSVERSE CONTRACTION JOINT

--- SAWED JOINT WITH NO TIE BARS OR DOWELS

--- TRANSVERSE EXPANSION JOINT

--- HMA SURFACING

--- AGGREGATE SURFACE COURSE, TYP. A, 8"



HENRY, MEISENHEIMER & GENDE, INC. 1075 LAKE ROAD CARLYLE, ILLINOIS 62231 (618) 594-3711 STA. 20+00 - STA. 23+00 (ILLINOIS AVE.)

PLAN

DATE	
BY	
CHECKED	
DESIGNED	
NOTED	
PLOTTED	

PROFILE

DATE	
BY	
CHECKED	
DESIGNED	
NOTED	
PLOTTED	

CADD FILE: /SBR/5881-995.dgn
PLOTTER: 8017E

PLA & G. 4650