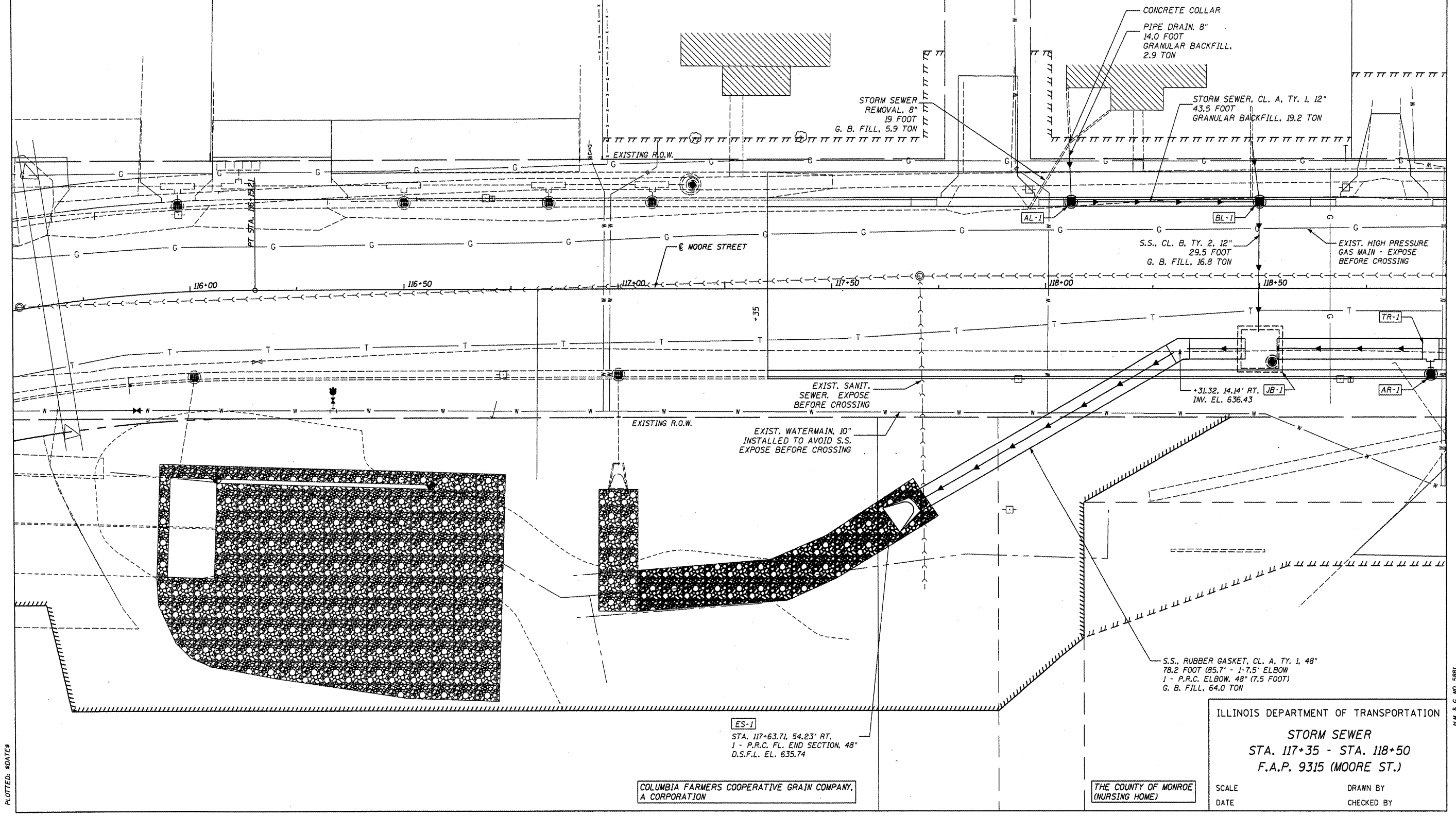


MICHAEL R. BEIL &  
LENA S. BEIL

LEROY F. HORN &  
WANDA L. HORN

F.A.U. RTE.	SECTION	COUNTY	TOTAL SHEETS	SHEET NO.
9315	05-00032-02-PV	MONROE	55	22
STA. 117+35		TO STA. 118+50		
FED. ROAD DIST. NO.		ILLINOIS	FED. AID PROJECT	
CONTRACT NO. 97349				



COLUMBIA FARMERS COOPERATIVE GRAIN COMPANY,  
A CORPORATION

THE COUNTY OF MONROE  
(NURSING HOME)

ILLINOIS DEPARTMENT OF TRANSPORTATION  
STORM SEWER  
STA. 117+35 - STA. 118+50  
F.A.P. 9315 (MOORE ST.)

SCALE DATE  
DRAWN BY CHECKED BY

CADD FILE: /5881/5881-ssplan.dgn  
 PLOTTED: 8/21/15

H.M. & G. MO. 5881