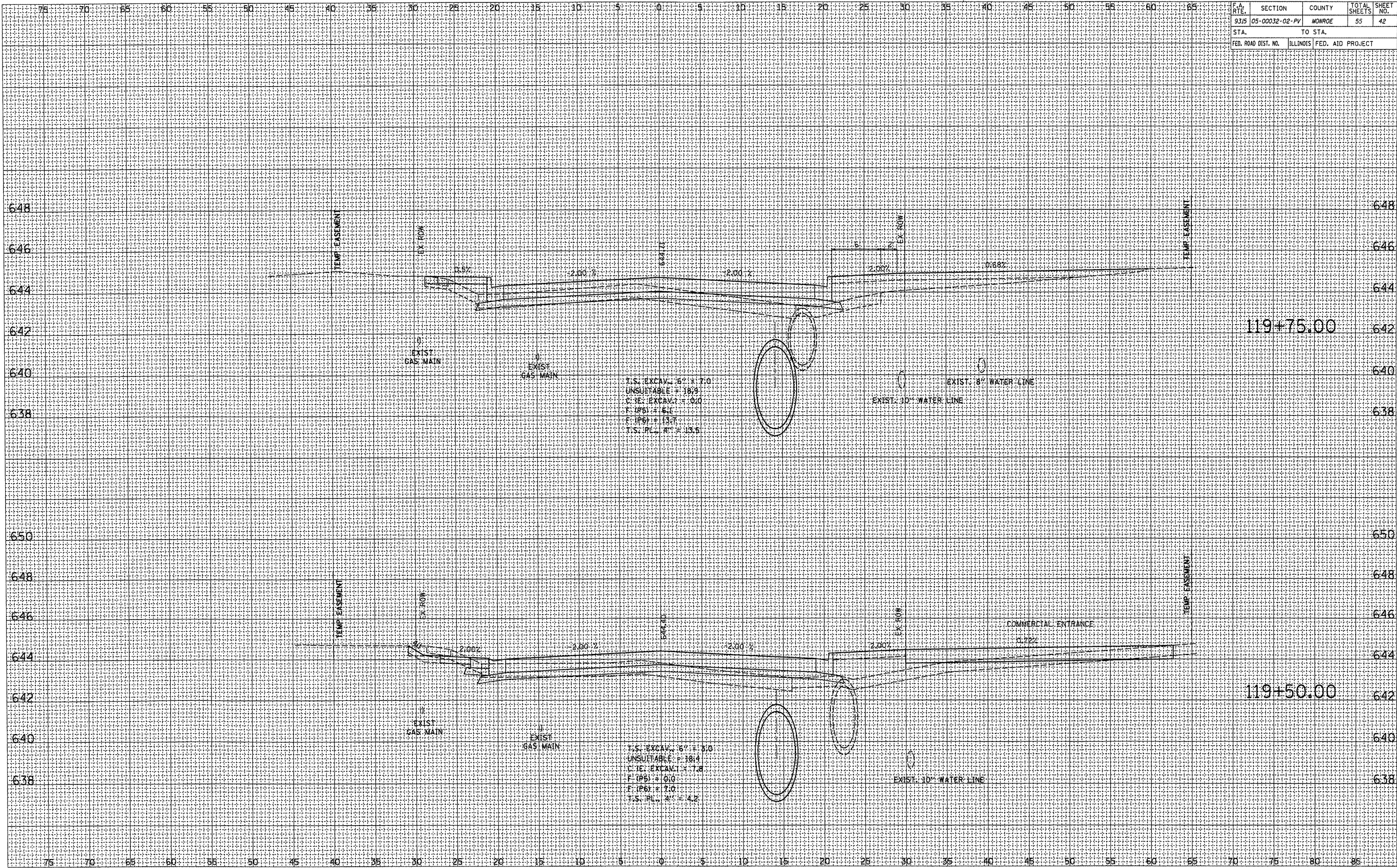


F.A. RTE.	SECTION	COUNTY	TOTAL SHEETS	SHEET NO.
9315	05-00032-02-PV	MONROE	55	42
STA.		TO STA.		
FED. ROAD DIST. NO.	ILLINOIS	FED. AID PROJECT		

DATE	BY

DATE	BY



T.S. EXCAV. 6" = 7.0
 UNSUITABLE = 18.9
 C.YE. EXCAV. = 0.0
 F. (P6) = 6.1
 F. (P6) = 13.7
 T.S. PL. 4" = 13.5

T.S. EXCAV. 6" = 3.0
 UNSUITABLE = 18.4
 C.YE. EXCAV. = 7.8
 F. (P6) = 0.0
 F. (P6) = 7.0
 T.S. PL. 4" = 4.2

MOORE STREET