

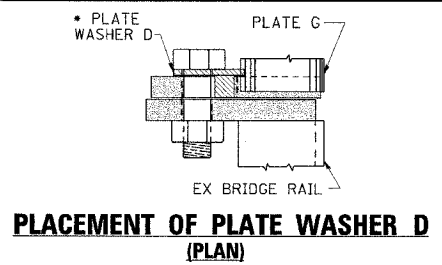


CONTRACT NO. 98999

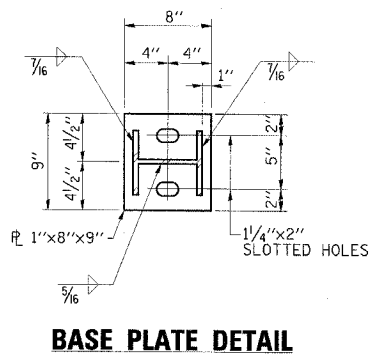
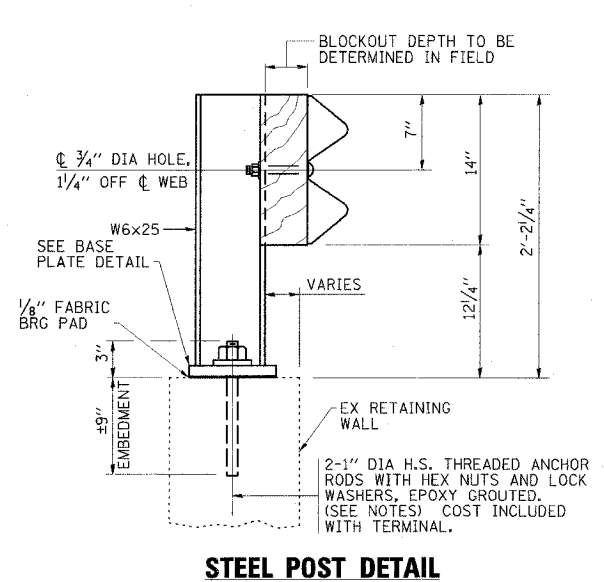
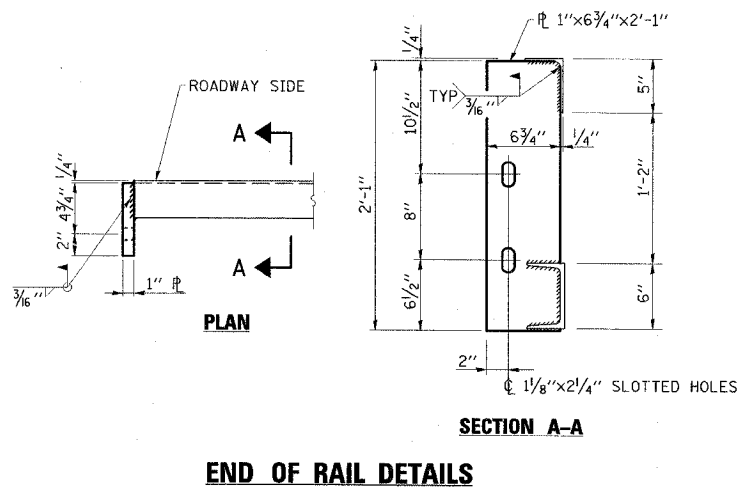
FAP RTE	SECTION	COUNTY	TOTAL SHEETS	SHEET NO.
869	(105A)B-1	SALINE	71	27
STA.		TO STA.		
FED. ROAD DIST. NO.	ILLINOIS	FED. AID PROJECT		

NOTES

- SEE STANDARD 631026 FOR PLATES E AND G AND ADDITIONAL DETAILS.
- ALL MODIFICATIONS TO THE EXISTING BRIDGE RAIL SHALL BE INCLUDED IN THE COST OF "TRAFFIC BARRIER TERMINAL, TYPE 5A (SPECIAL)".
- PROVIDE ONE 1/8" AND ONE 1/16" STEEL SHIMS FOR THE STEEL POST. SHIMS SHALL BE SIMILAR TO BASE PLATE IN SIZE AND HOLES.
- THE CONTRACTOR SHALL USE THE CAPSULE OR THE ADHESIVE CARTRIDGE TYPE ANCHOR RODS THAT HAVE BEEN PREVIOUSLY TESTED AND GIVEN A PRIOR APPROVAL BY THE DEPARTMENT. THE CONTRACTOR SHALL INSTALL THESE ANCHOR RODS IN PRE-DRILLED HOLES ACCORDING TO THE MANUFACTURER'S RECOMMENDATIONS AND PROCEDURES. THE CAPSULE OR THE ADHESIVE CARTRIDGE SHALL BE SEALED WITH PRE-MEASURED AMOUNTS OF THE ADHESIVE CHEMICAL.
- NUTS FOR 1" DIA. THREADED ANCHOR RODS CONNECTING THE BASE PLATE TO THE CONCRETE SHALL BE TIGHTENED TO A SNUG FIT AND GIVEN AN ADDITIONAL 1/8 TURN.

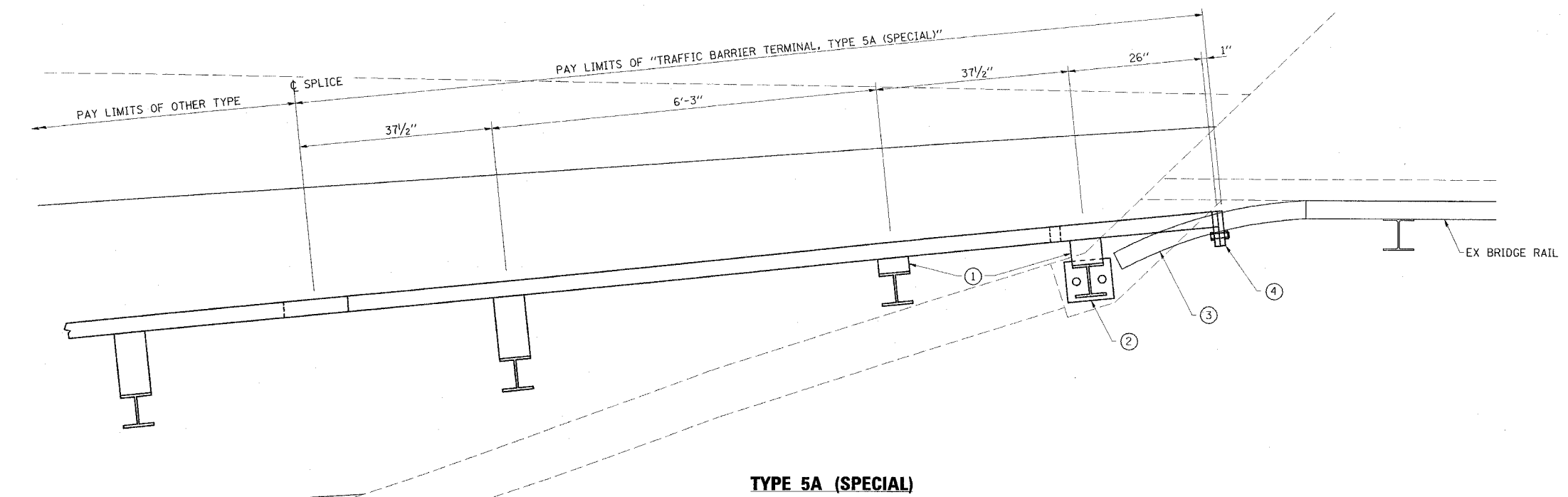


• INSTALL PLATE WASHER D SO THAT THE 1" PROJECTION FILLS THE REMAINDER OF THE SLOTTED HOLES IN THE 1" END PLATE AFTER THE 1" DIA. BOLTS ARE IN PLACE



LEGEND

- VARY DEPTH OF WOOD BLOCKOUT AS REQUIRED FOR POST INSTALLATION.
- SEE STEEL POST DETAIL.
- FIELD CUT EXISTING BRIDGE RAIL AS REQUIRED FOR TERMINAL INSTALLATION. MINOR BENDING MAY ALSO BE REQUIRED TO MATCH FACE OF NEW GUARDRAIL.
- SEE END OF RAIL DETAILS.



ESCA
CONSULTANTS, INC.

DESIGNED BY:	MTD	06/07
DRAWN BY:	DWH	06/07
CHECKED BY:	MTD	10/07
APPROVED BY:	RDP	03/08

TBT TYPE 5A (SPECIAL)
FAP RTE 869 (IL 34)
SECTION (105A)B-1
SALINE COUNTY

PLOT DATE = \$DATE\$
PLOT SCALE = \$SCALE\$
REFERENCE = \$REF\$