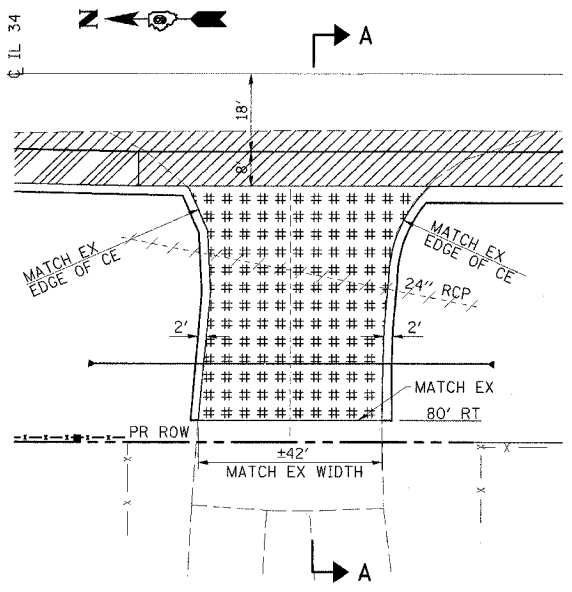


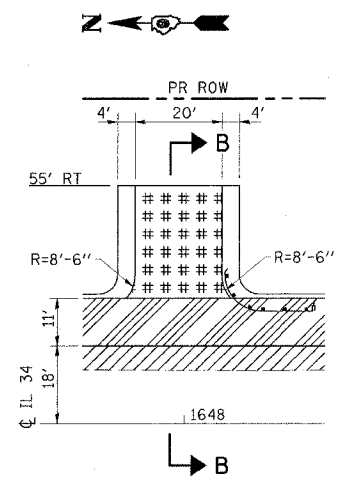


CONTRACT NO. 98999

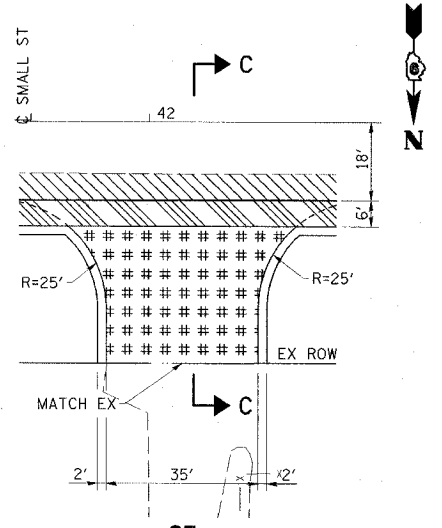
| FAP RTE             | SECTION   | COUNTY           | TOTAL SHEETS | SHEET NO. |
|---------------------|-----------|------------------|--------------|-----------|
| 869                 | (105A)B-1 | SALINE           | 71           | 29        |
| STA.                |           | TO STA.          |              |           |
| FED. ROAD DIST. NO. | ILLINOIS  | FED. AID PROJECT |              |           |



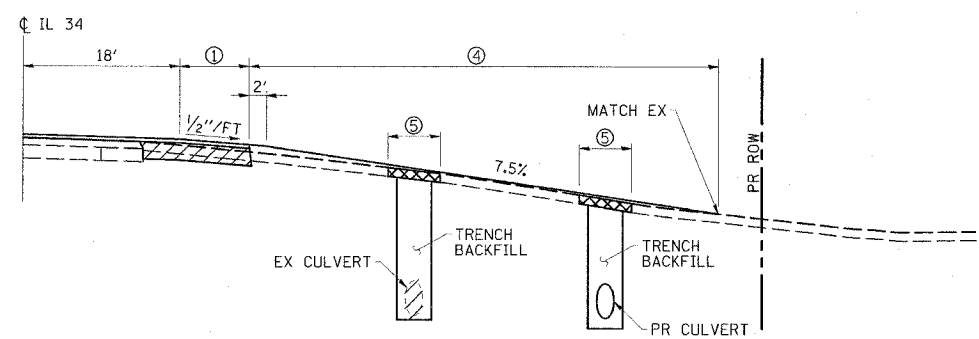
**CE**  
STA 1646+50.0



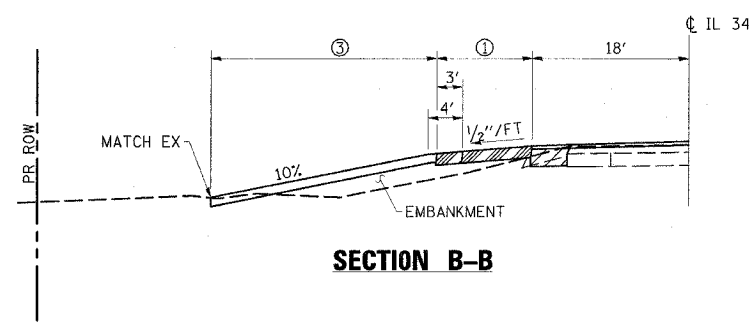
**FE**  
STA 1647+94.0



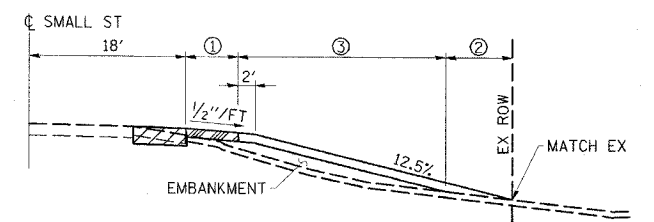
**CE**  
STA 42+06.5



**SECTION A-A**



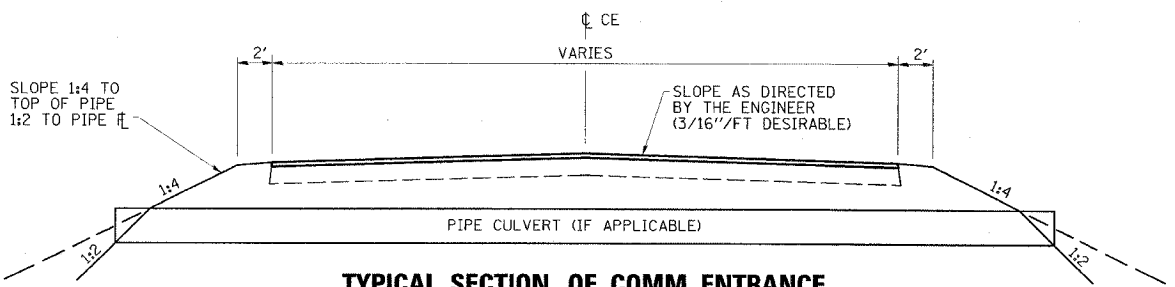
**SECTION B-B**



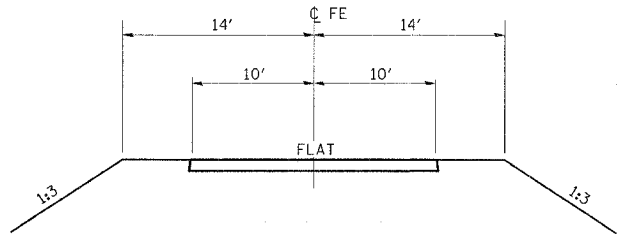
**SECTION C-C**

**LEGEND**

- ① CONSTRUCT HOT-MIX ASPHALT SHOULDER "FULL SHOULDER WIDTH" THROUGH ENTRANCE UNLESS OTHERWISE SHOWN ON THE PLANS OR AS DIRECTED BY THE ENGINEER.
- ② AGGREGATE TAPER FOR EXISTING GRAVEL SURFACE.
- ③ 6" AGGREGATE SURFACE COURSE FOR EXISTING GRAVEL SURFACE.
- ④ VARIABLE DEPTH HOT-MIX ASPHALT RESURFACING.
- ⑤ CONSTRUCT 6" CLASS D PATCH OVER TRENCH FOR CULVERT REMOVAL/INSTALLATION.



**TYPICAL SECTION OF COMM. ENTRANCE  
&  
METHOD OF CALCULATING PIPE LENGTH  
(IF APPLICABLE)**



**TYPICAL SECTION  
FIELD ENTRANCE**

**MISCELLANEOUS DETAILS**  
FAP RTE 869 (IL 34)  
SECTION (105A)B-1  
SALINE COUNTY

**ESCA**  
CONSULTANTS, INC.

|              |     |       |
|--------------|-----|-------|
| DESIGNED BY: | MTD | 06/07 |
| DRAWN BY:    | DWH | 06/07 |
| CHECKED BY:  | MTD | 10/07 |
| APPROVED BY: | RDP | 03/08 |

PLOT DATE = DATE\*  
PLOT SCALE = SCALE\*  
REFERENCE = REF\*