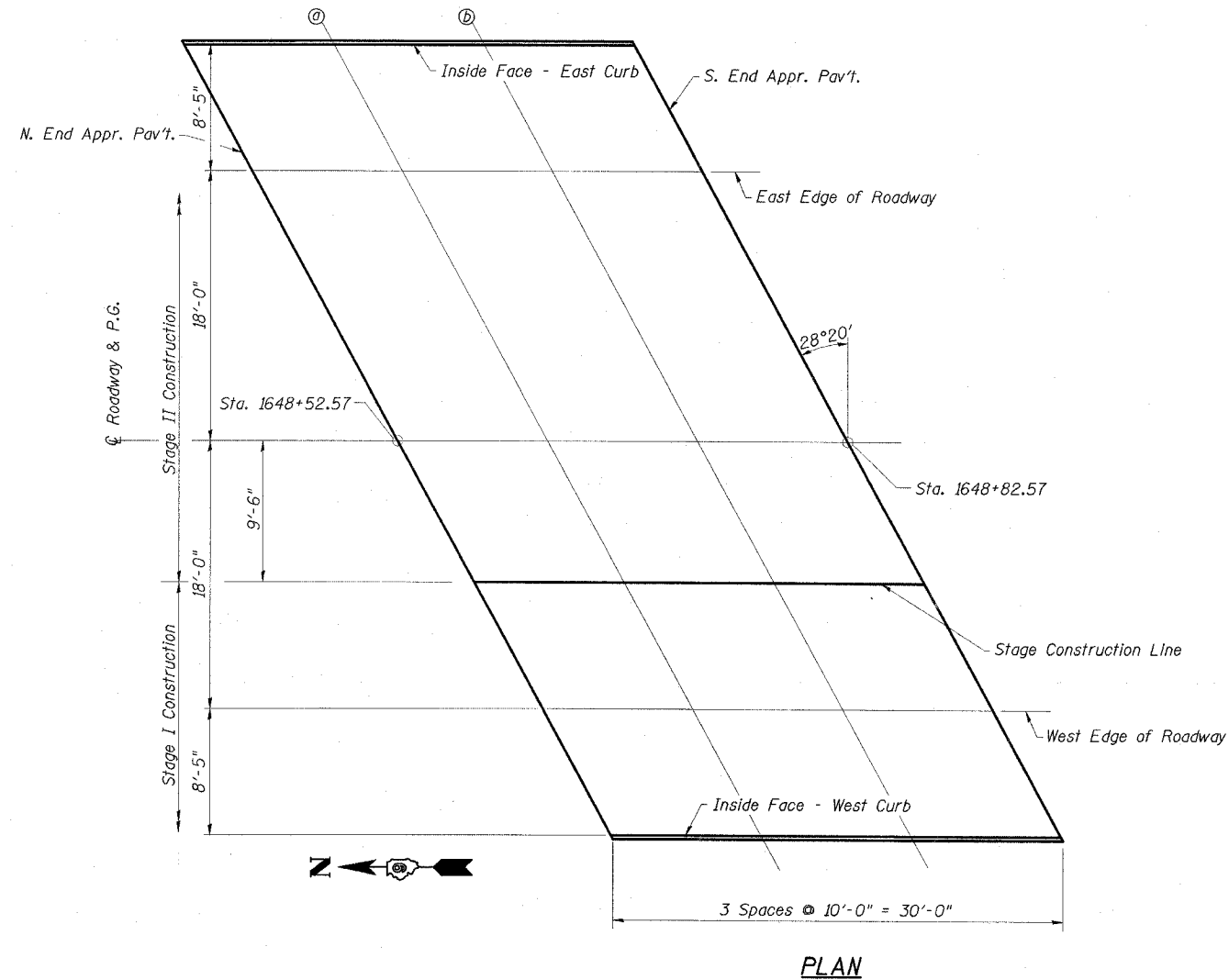


STATE OF ILLINOIS
DEPARTMENT OF TRANSPORTATION

ROUTE NO.	SECTION	COUNTY	SHEET	SHEET NO.
FAP 869	*	SALINE	71	35
CONTRACT NO. 98999				*105A1B-1

17 SHEETS



INSIDE FACE - WEST CURB

Location	Station	Offset	Theoretical Grade Elevations
N. End Appr. Pav't	1648+66.81	+26.42	365.96
a	1648+76.81	+26.42	365.94
b	1648+86.81	+26.42	365.93
S. End Appr. Pav't	1648+96.81	+26.42	365.91

CL ROADWAY & PROFILE GRADE

Location	Station	Offset	Theoretical Grade Elevations
N. End Appr. Pav't	1648+52.57	0.00	366.45
a	1648+62.57	0.00	366.43
b	1648+72.57	0.00	366.41
S. End Appr. Pav't	1648+82.57	0.00	366.39

WEST EDGE OF ROADWAY

Location	Station	Offset	Theoretical Grade Elevations
N. End Appr. Pav't	1648+62.27	+18.00	366.15
a	1648+72.27	+18.00	366.13
b	1648+82.27	+18.00	366.11
S. End Appr. Pav't	1648+92.27	+18.00	366.09

EAST EDGE OF ROADWAY

Location	Station	Offset	Theoretical Grade Elevations
N. End Appr. Pav't	1648+42.86	-18.00	366.18
a	1648+52.86	-18.00	366.16
b	1648+62.86	-18.00	366.15
S. End Appr. Pav't	1648+72.86	-18.00	366.13

STAGE CONSTRUCTION JOINT

Location	Station	Offset	Theoretical Grade Elevations
N. End Appr. Pav't	1648+57.69	+9.50	366.29
a	1648+67.69	+9.50	366.27
b	1648+77.69	+9.50	366.25
S. End Appr. Pav't	1648+87.69	+9.50	366.23

INSIDE FACE - EAST CURB

Location	Station	Offset	Theoretical Grade Elevations
N. End Appr. Pav't	1648+38.32	-26.42	366.01
a	1648+48.32	-26.42	366.00
b	1648+58.32	-26.42	365.98
S. End Appr. Pav't	1648+68.32	-26.42	365.96

ESCA
CONSULTANTS, INC.

DESIGNED BY:	FMA	2/08
DRAWN BY:	DWH/cj	2/08
CHECKED BY:	RDP	2/08
APPROVED BY:	RDP	3/08

TOP OF NORTH APPROACH
SLAB ELEVATIONS
IL 34 OVER
WEST HARRISBURG DRAINAGE DITCH
FAP ROUTE 869 - SECTION (105A)B-1
SALINE COUNTY
STATION 1649+21.50
STRUCTURE NO. 083-0066