

STATE OF ILLINOIS
DEPARTMENT OF TRANSPORTATION

ROUTE NO. FAP 869	SECTION *	COUNTY SALINE	SHEET NO. 71	SHEET 40	SHEET NO. 11 17 SHEETS
FED. ROAD DIST. NO.		ILLINOIS	FED. AID PROJECT -		

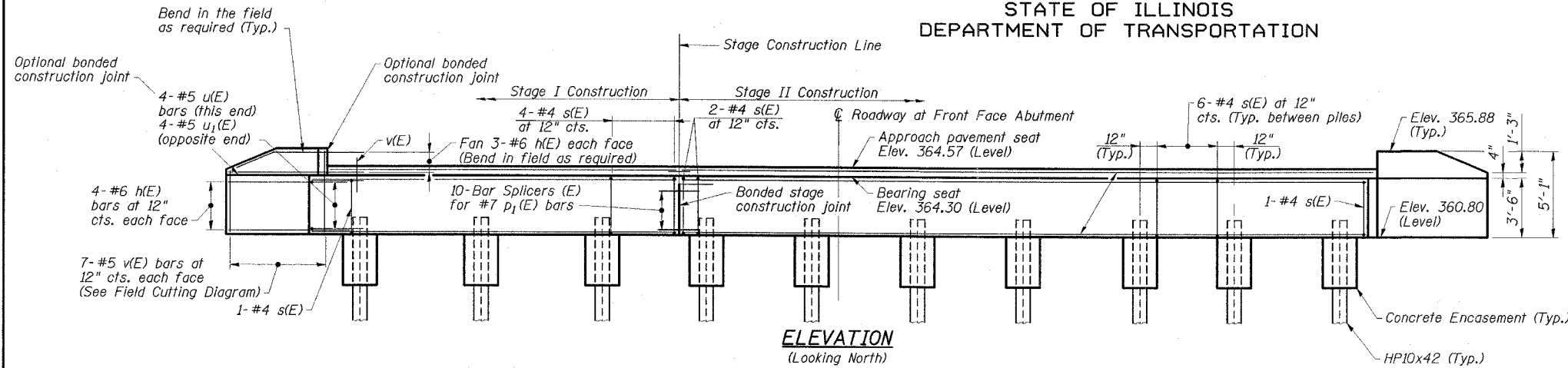
CONTRACT NO. 98999

(105A)B-1

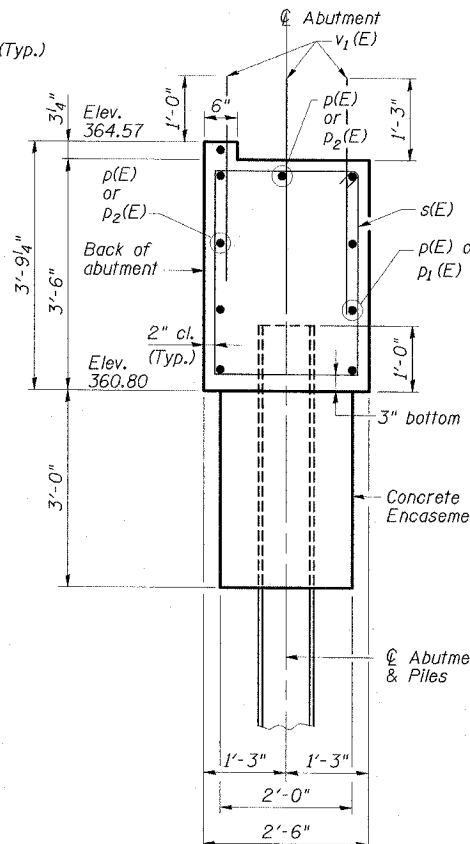
**NORTH ABUTMENT
BILL OF MATERIAL**

Bar	No.	Size	Length	Shape
h(E)	28	#6	8'-0"	
p(E)	10	#7	40'-7"	
p ₁ (E)	4	#7	21'-4"	
p ₂ (E)	6	#7	20'-4"	
s(E)	112	#4	11'-0"	□
u(E)	4	#5	8'-0"	┌
u ₁ (E)	4	#5	7'-5"	┌
v(E)	14	#5	8'-0"	—
v ₁ (E)	187	#5	3'-6"	—
Reinforcement Bars, Epoxy Coated		Pound	3280	
Concrete Structures		Cu. Yd.	23	
Structure Excavation		Cu. Yd.	100	
Furnishing Steel Piles HP10x42		Foot	225	
Driving Piles		Foot	225	
Test Pile Steel HP10x42		Each	1	
Porous Granular Embankment (Special)		Cu. Yd.	29	
Bar Splicers		Each	10	
Concrete Encasement		Cu. Yd.	3.5	
Geocomposite Wall Drain		Sq. Yd.	31	
Pipe Underdrains for Structures, 4"		Foot	89	

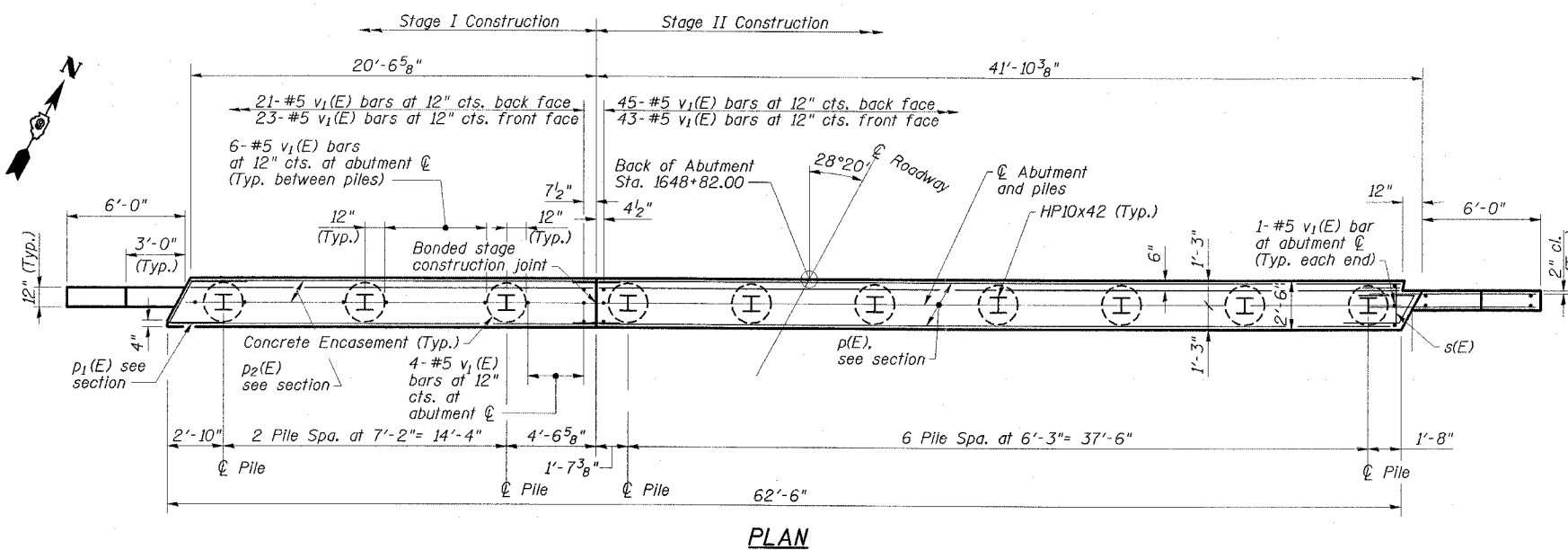
Note: Field cut p(E) & p₁(E) bars as required.



ELEVATION
(Looking North)



**SECTION THRU
NORTH ABUTMENT**
(Horizontal dimensions at right angles)



PLAN

MIN. BAR LAP

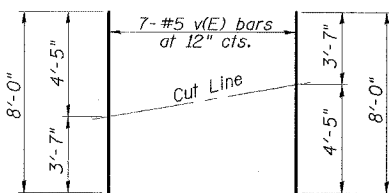
#5 1'-10"

NOTES

1. For pile details and concrete encasement details see Dwg. No. 16 of 17.

PILE DATA

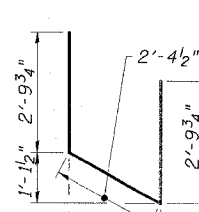
Pile Type & Size: Steel HP10x42
Nominal Required Bearing: 335 kips
Allowable Resistance Available: 111 kips
Estimated Pile Length: 25'
No. of Production Piles: 9
No. of Test Piles: 1



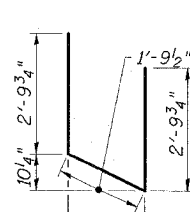
BAR v(E)

FIELD CUTTING DIAGRAM

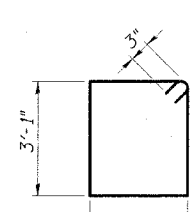
Order v(E) full length. Cut as shown and use remainder of bars in opposite face.



BAR u(E)



BAR u1(E)



BAR s(E)

BAR BENDING DETAILS

ESCA
CONSULTANTS, INC.

DESIGNED BY:	FMA	2/08
DRAWN BY:	DWH/JPC	2/08
CHECKED BY:	RDP	2/08
APPROVED BY:	RDP	3/08

**NORTH ABUTMENT
IL 34 OVER
WEST HARRISBURG DRAINAGE DITCH
FAP ROUTE 869 - SECTION (105A)B-1
SALINE COUNTY
STATION 1649+21.50
STRUCTURE NO. 083-0066**