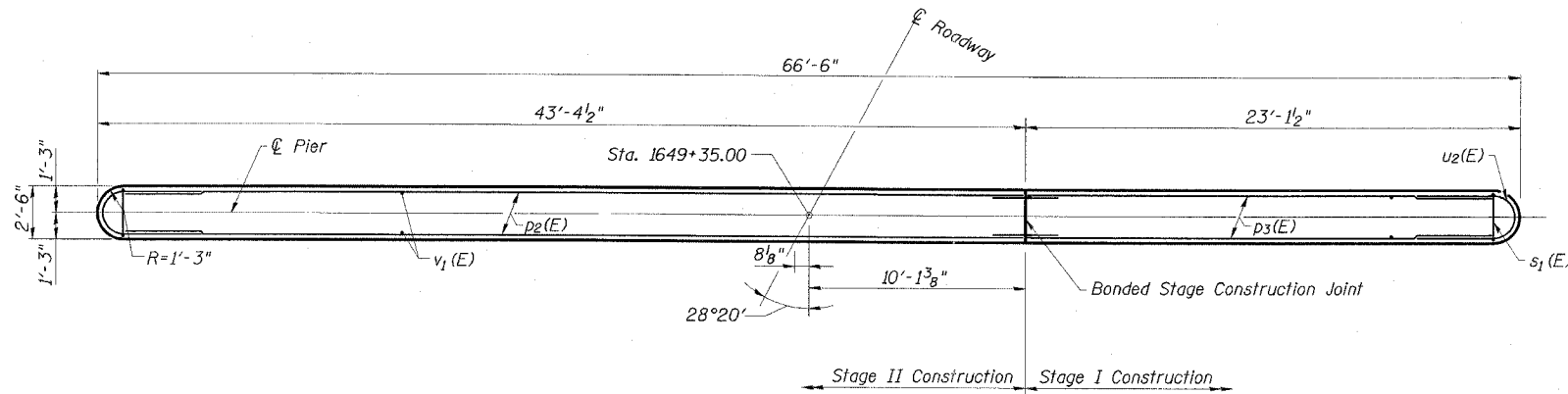
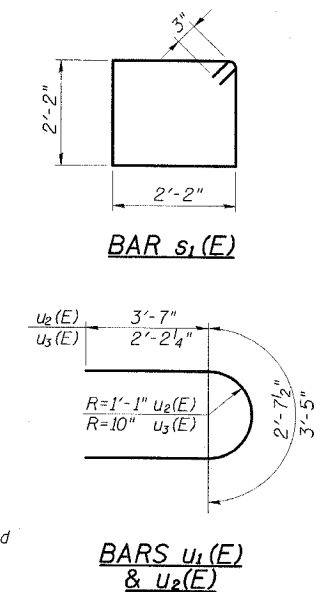


STATE OF ILLINOIS
DEPARTMENT OF TRANSPORTATION

ROUTE NO.	SECTION	COUNTY	SHEET	SHEET NO.
FAP 869	*	SALINE	71	43
CONTRACT NO. 98999				*105A/B-1



TOP PLAN



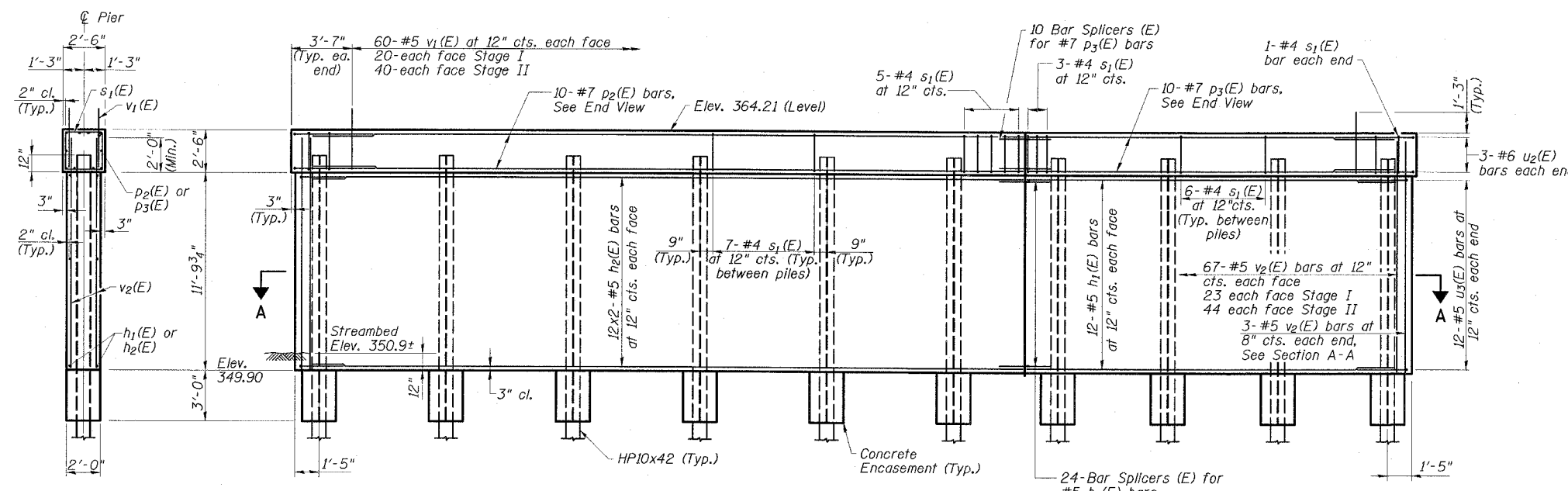
BAR BENDING DETAILS

- NOTES**
- For pile details and concrete encasement details see Dwg. No. 16 of 17.
 - Bars indicated thus: 9x2-#7 etc. Indicates 9 lines of bars with 2 lengths per line.

**PIER 1
BILL OF MATERIAL**

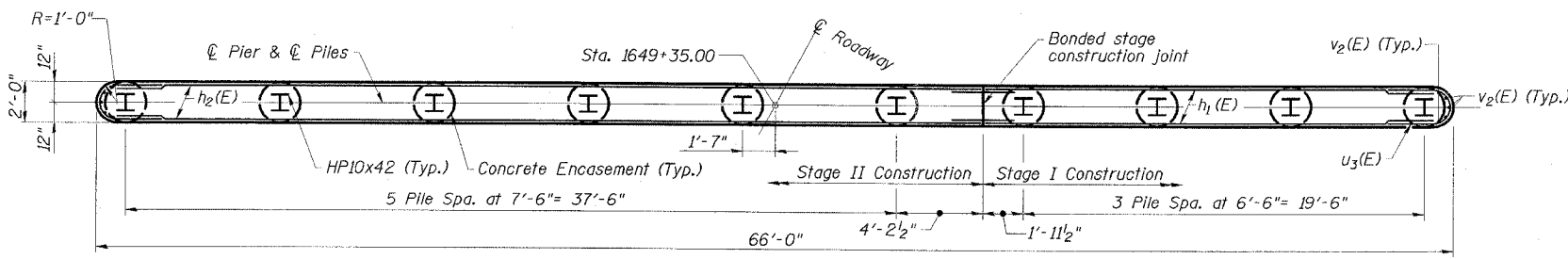
Bar	No.	Size	Length	Shape
h1(E)	24	#5	21'-9"	—
h2(E)	48	#5	21'-8"	—
p2(E)	10	#7	42'-0"	—
p3(E)	10	#7	21'-9"	—
s1(E)	126	#4	9'-2"	□
u2(E)	6	#6	10'-7"	U
u3(E)	24	#5	7'-0"	U
v1(E)	120	#5	3'-6"	—
v2(E)	140	#5	13'-8"	—

Concrete Structures	Cu. Yd.	73
Reinforcement Bars, Epoxy Coated	Pound	6410
Structure Excavation	Cu. Yd.	22
Test Pile Steel HP10x42	Each	1
Furnishing Steel Piles HP10x42	Lin. Ft.	216
Driving Piles	Lin. Ft.	216
Underwater Structure Excavation Protection Location 2	Each	1
Bar Splicers	Each	34
Concrete Encasement	Cu. Yd.	3.5



ELEVATION
(Looking South)

END VIEW



SECTION A-A

MIN. BAR LAP
#5 1'-10"

PILE DATA
Pile Type & Size: Steel HP10x42
Nominal Required Bearing: 335 kips
Allowable Resistance Available: 111 kips
Estimated Pile Length: 24'
No. of Production Piles: 9
No. of Test Piles: 1

**PIER 2
IL 34 OVER
WEST HARRISBURG DRAINAGE DITCH
FAP ROUTE 869 - SECTION (105A)B-1
SALINE COUNTY
STATION 1649+21.50
STRUCTURE NO. 083-0066**

ESCA
CONSULTANTS, INC.

DESIGNED BY:	FMA	2/08
DRAWN BY:	DWH/JPC	2/08
CHECKED BY:	RDP	2/08
APPROVED BY:	RDP	3/08