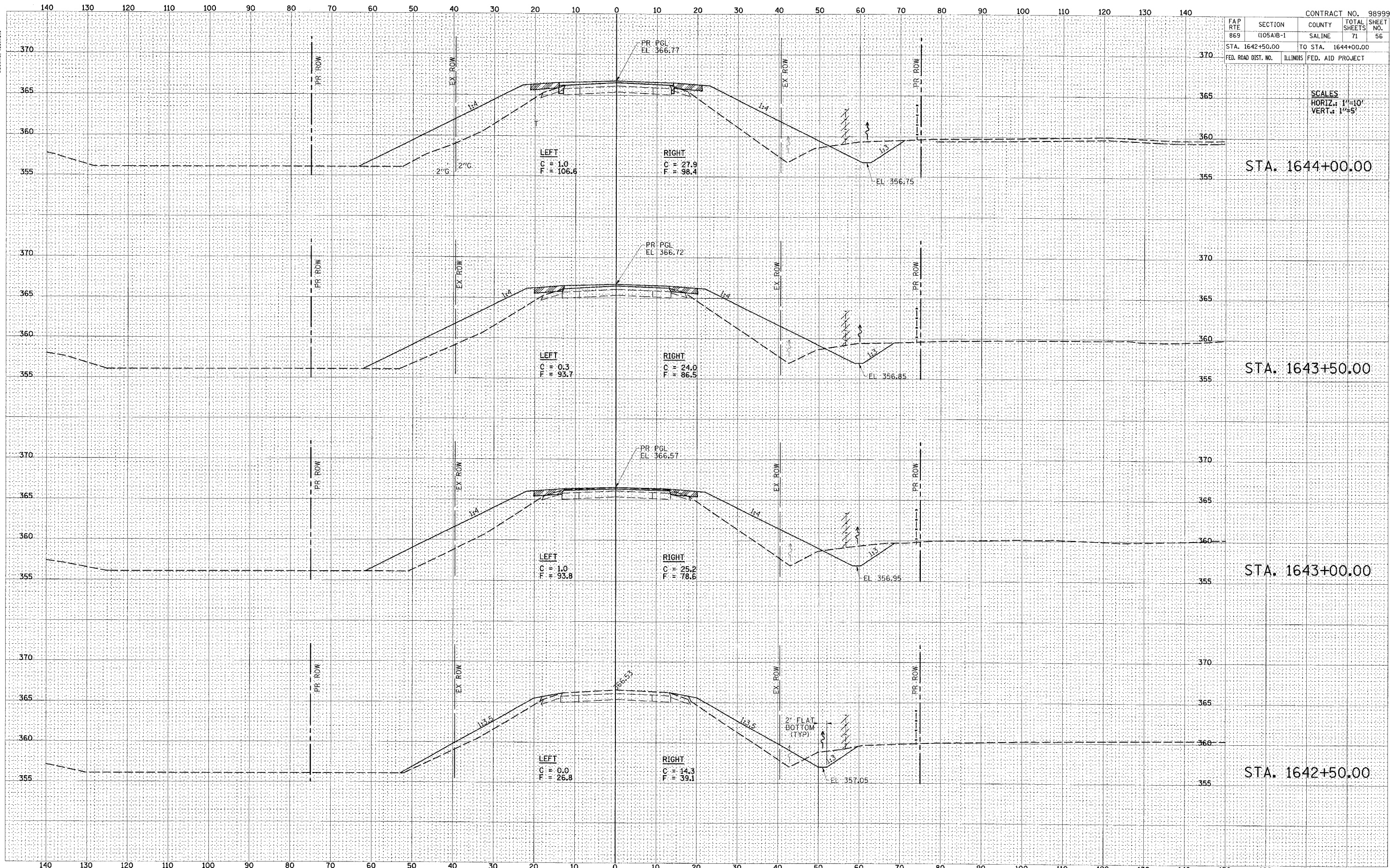




DATE	
BY	
DESIGNED	
CHECKED	
APPROVED	
DATE	
BY	
DESIGNED	
CHECKED	
APPROVED	
DATE	
BY	
DESIGNED	
CHECKED	
APPROVED	

DATE	
BY	
DESIGNED	
CHECKED	
APPROVED	
DATE	
BY	
DESIGNED	
CHECKED	
APPROVED	
DATE	
BY	
DESIGNED	
CHECKED	
APPROVED	



FAP RTE	SECTION	COUNTY	TOTAL SHEETS	SHEET NO.
869	(105A)B-1	SALINE	71	56
STA. 1642+50.00		TO STA. 1644+00.00		
FED. ROAD DIST. NO.	ILLINOIS	FED. AID PROJECT		

SCALES
HORIZ.: 1"=10'
VERT.: 1"=5'