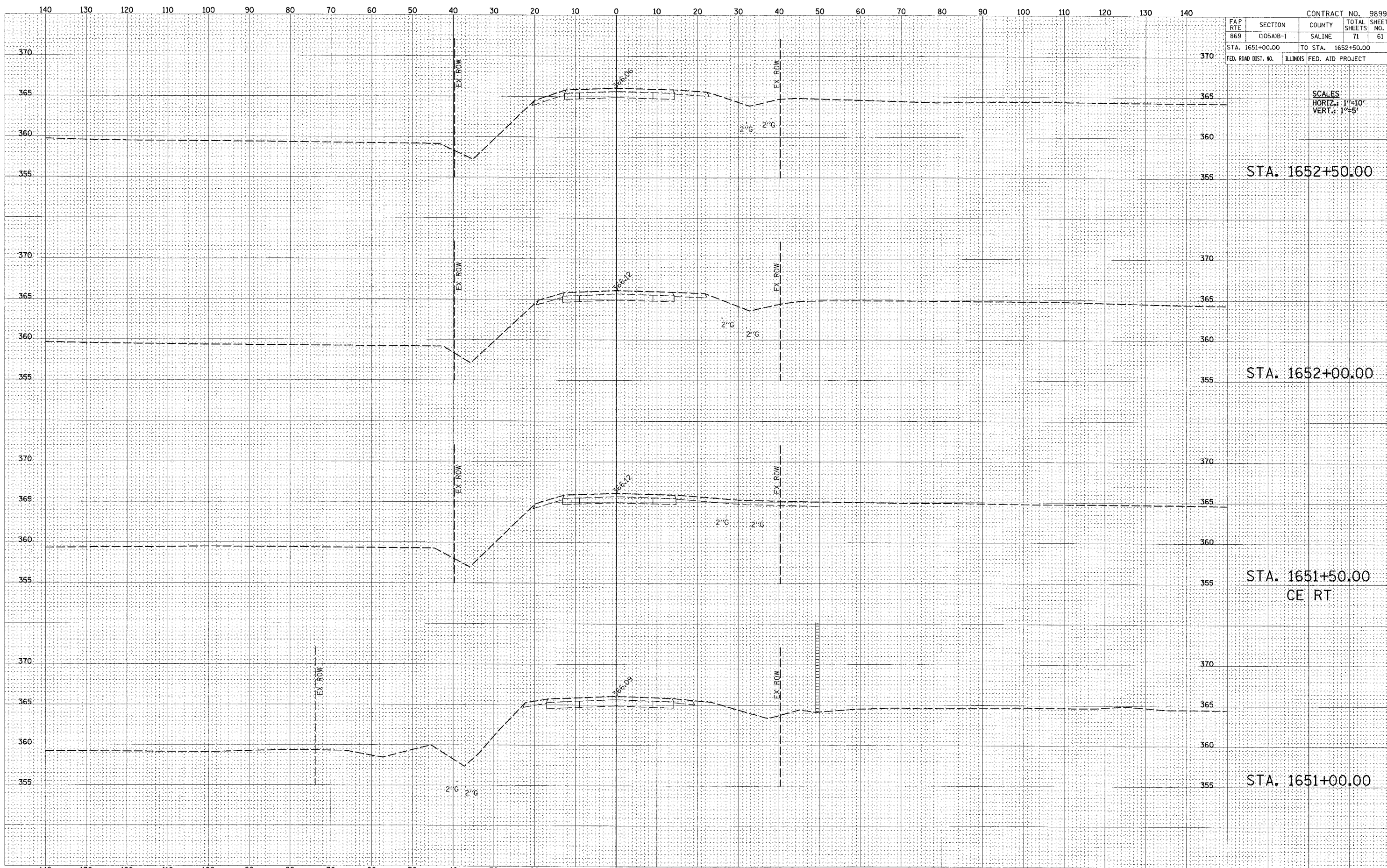




FINAL SURVEY	SUPERSEDED	BY	DATE
NOTE BOOK	PLOTTED		
NO.	TEMPLATE		
	AREAS CHECKED		

ORIGINAL SURVEY	SUPERSEDED	BY	DATE
NOTE BOOK	PLOTTED		
NO.	TEMPLATE		
	AREAS CHECKED		



CONTRACT NO. 98999				
FAP RTE	SECTION	COUNTY	TOTAL SHEETS	SHEET NO.
869	(105A)B-1	SALINE	71	61
STA. 1651+00.00		TO STA. 1652+50.00		
FED. ROAD DIST. NO.	ILLINOIS	FED. AID PROJECT		

SCALES
HORIZ.: 1"=10'
VERT.: 1"=5'

STA. 1652+50.00

STA. 1652+00.00

STA. 1651+50.00
CE RT

STA. 1651+00.00