

**GENERAL NOTES:**

THIS SECTION SHALL BE CONSTRUCTED IN ACCORDANCE WITH THE PLANS, SPECIAL PROVISIONS AND "STANDARD SPECIFICATIONS FOR ROAD AND BRIDGE CONSTRUCTION", ADOPTED JANUARY 1, 2007.

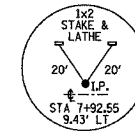
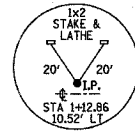
THE WORK INVOLVED ON THIS SECTION CONSISTS OF THE REMOVAL OF THE EXISTING STRUCTURE, THE CONSTRUCTION OF A 100 FOOT LONG TRIPLE SPAN PRECAST, PRESTRESSED CONCRETE DECK BEAM BRIDGE, EARTH APPROACHES, AGGREGATE SURFACE COURSE AND OTHER MISCELLANEOUS ITEMS NECESSARY TO COMPLETE THIS SECTION.

ALL ELEVATIONS ARE BASED ON U.S.G.S. MEAN SEA LEVEL DATUM.

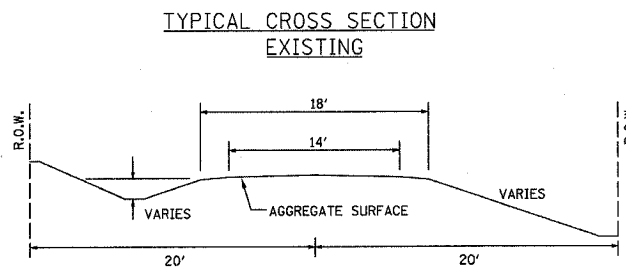
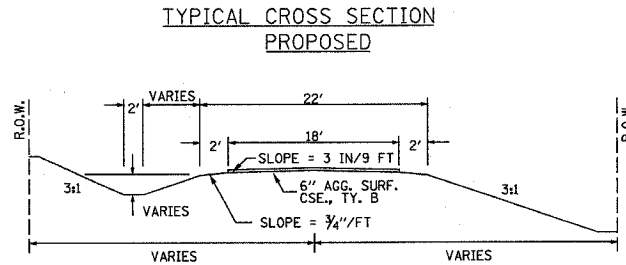
IT SHALL BE THE CONTRACTOR'S RESPONSIBILITY TO CONTACT ALL THE UTILITIES, AFFECTING THE PROJECT, PRIOR TO CONSTRUCTION.

NOTE: CONSTRUCTION TRANSITION  
STA. 2+40 TO STA 2+90  
STA. 7+05 TO STA 7+55

ALL QUANTITIES ARE INCLUDED IN THE PROPOSAL



CURVE #1  
P.I. STA = 7+39.25  
Δ = 1°54'35"  
D = 154.35'  
R = 3000'  
T = 182.77'  
L = 365.09'  
E = 5.56'  
e = NONE  
T.R. = NONE  
S.E. RUN = NONE  
P.C. STA = 5+56.48  
P.T. STA = 9+21.57



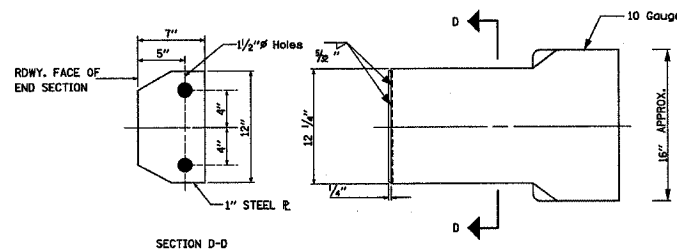
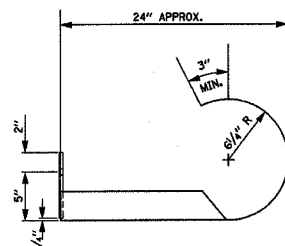
**UTILITIES:**

J.U.L.L.I.E. 1-800-892-0123

WAYNE-WHITE ELECTRIC CO-OP  
618-842-2196

ENFIELD WATER DEPARTMENT  
618-963-2222

**CURLED END SECTION DETAIL**

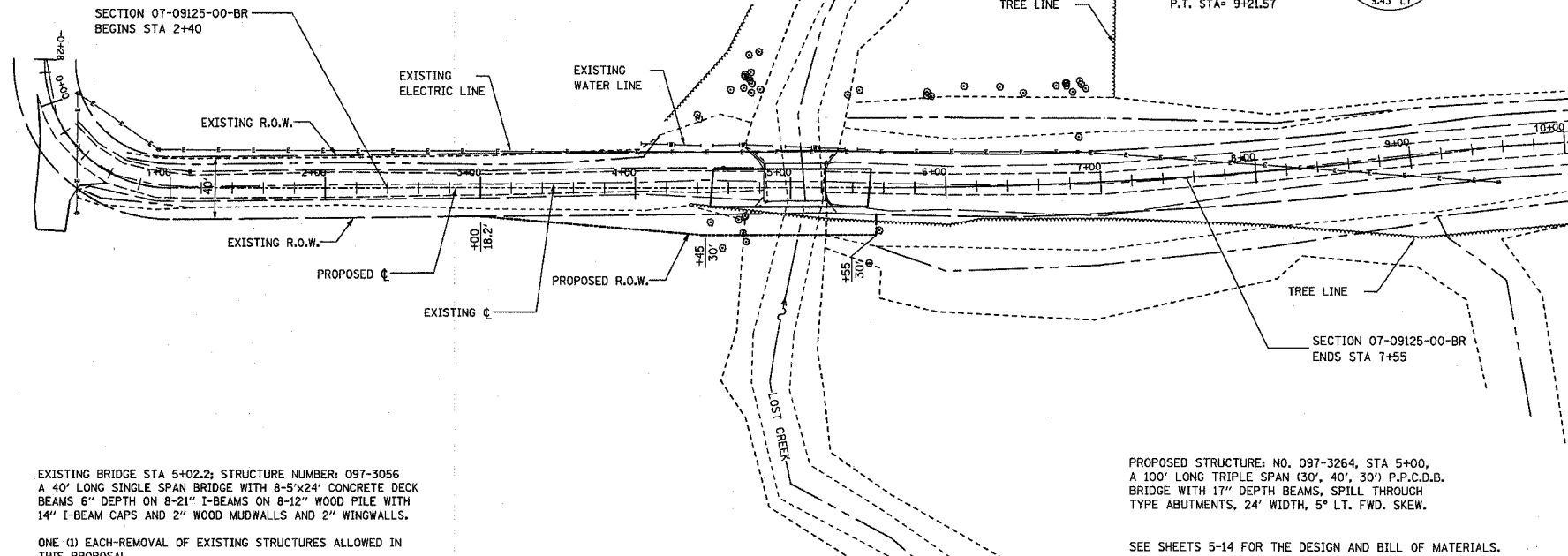


ALL OTHER STEEL SHAPES AND PLATES SHALL CONFORM TO THE REQUIREMENTS OF A.A.S.H.T.O. DESIGNATION M-183 EXCEPT POSTS AND ANGLES SHALL CONFORM TO A.A.S.H.T.O. M-223, GRADE 50.

BOLTS, CAP SCREWS, AND NUTS SHALL CONFORM TO THE REQUIREMENT OF A.S.T.M. DESIGNATION A-307 EXCEPT FOR HIGH STRENGTH BOLTS, NUTS, AND WASHERS NOTED WHICH SHALL CONFORM TO A.A.S.H.T.O. DESIGNATION M-164.

ALL BOLTS, NUTS, CAP SCREWS, WASHERS, AND LOCK WASHERS SHALL BE GALVANIZED IN ACCORDANCE WITH A.A.S.H.T.O. DESIGNATION M-232.

ALL FIELD DRILLED HOLES SHALL BE COATED WITH AN APPROVED ZINC RICH PAINT BEFORE ERECTION.



EXISTING BRIDGE STA 5+02.2; STRUCTURE NUMBER: 097-3056  
A 40' LONG SINGLE SPAN BRIDGE WITH 8-5"x24" CONCRETE DECK BEAMS 6" DEPTH ON 8-21" I-BEAMS ON 8-12" WOOD PILE WITH 14" I-BEAM CAPS AND 2" WOOD MUDWALLS AND 2" WINGWALLS.

ONE (1) EACH-REMOVAL OF EXISTING STRUCTURES ALLOWED IN THIS PROPOSAL.

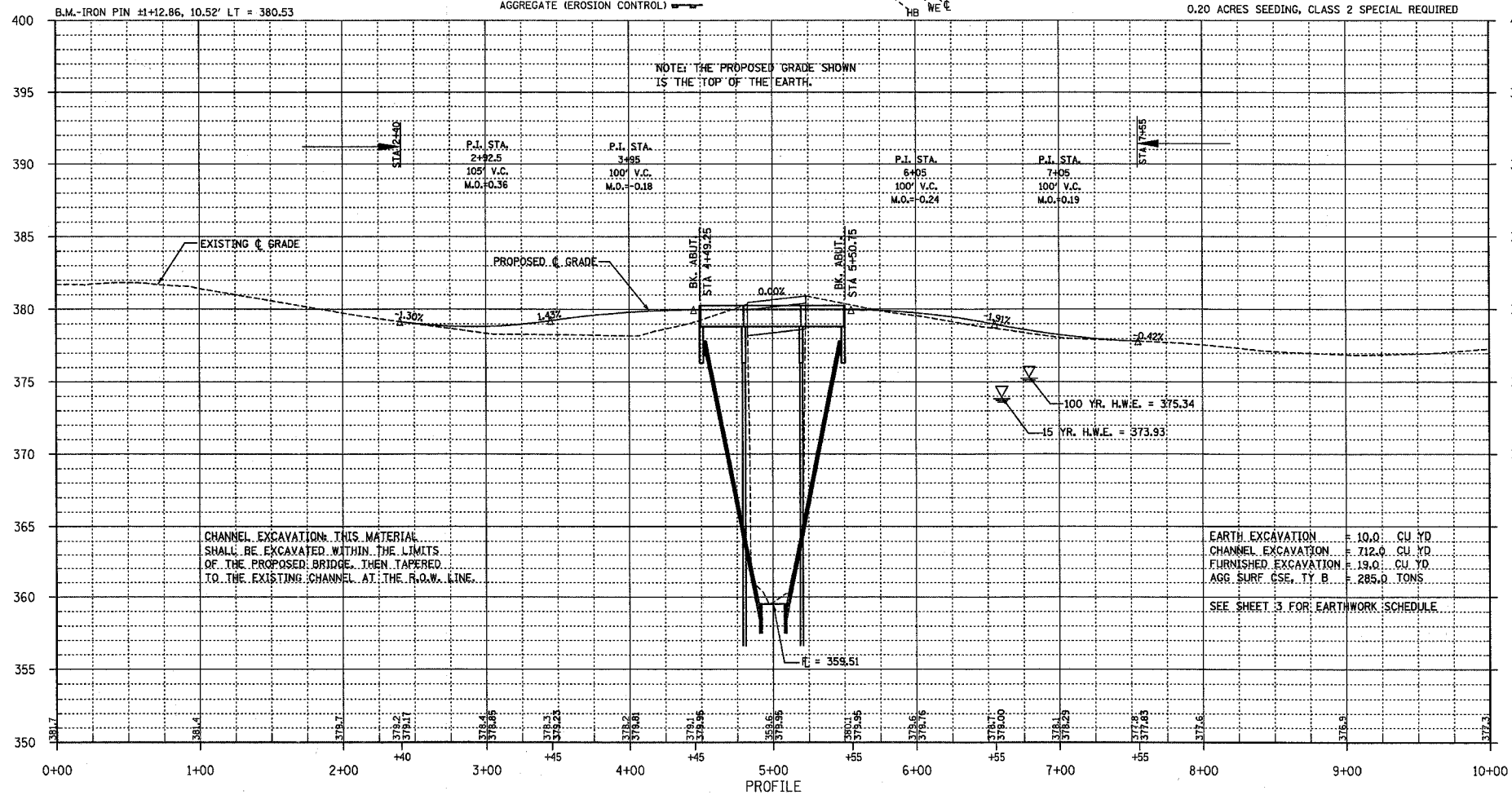
PROPOSED STRUCTURE: NO. 097-3264, STA 5+00, A 100' LONG TRIPLE SPAN (30', 40', 30') P.P.C.D.B. BRIDGE WITH 17" DEPTH BEAMS, SPILL THROUGH TYPE ABUTMENTS, 24" WIDTH, 5° LT. FWD. SKEW.

SEE SHEETS 5-14 FOR THE DESIGN AND BILL OF MATERIALS.

NOTE: FILL NEXT TO BRIDGE TO BE AGGREGATE SURFACE COURSE

TEMPORARY DITCH CHECKS -  
AGGREGATE (EROSION CONTROL)

26.0 UNITS-TREE REMOVAL (6 TO 15 UNITS DIAMETER)  
16.0 UNITS-TREE REMOVAL (OVER 15 UNITS DIAMETER)  
0.20 ACRES SEEDING, CLASS 2 SPECIAL REQUIRED



T.R.	SECTION	COUNTY	TOTAL SHEETS	SHEET NO.
107	07-09125-00-BR	WHITE	14	2
FED. ROAD DIST. NO. 9 ILLINOIS		LOST CREEK		
PROJECT # BR05-193401		CONTRACT # 99324		
LEC JOB # H071014WH				

323 W. 3RD ST.  
P.O. BOX 160  
MT. CARMEL, IL  
62863  
PHONE: (618)-262-8651  
FAX: (618)-263-3327

405 W. STATE ST.  
SUITE 1  
PRINCETON, IN  
47670  
PHONE: (312)-386-7611  
FAX: (312)-386-2812

**LAMAC ENGINEERING CO.**

PROFESSIONAL DESIGN FIRM  
LAND SURVEY & PROFESSIONAL ENGINEERING CORPORATION  
184-000897  
(62-032435)(35-002769)

AARON M. MEFFORD  
REGISTERED PROFESSIONAL ENGINEER OF ILLINOIS  
5 8 2 8 4

NAME: Aaron M. Mefford  
SIGNATURE: [Signature]  
DATE: 3-19-08  
EXPIRES: 11-30-09

MILL SHOALS TOWNSHIP  
OVER LOST CREEK  
WHITE COUNTY, ILLINOIS

SHEET TITLE:  
PLAN & PROFILE

SCALE: WHES  
BY: AMM  
DATE: 80607  
REV:

2 OF 14 SHEETS  
SHEET NO. 2