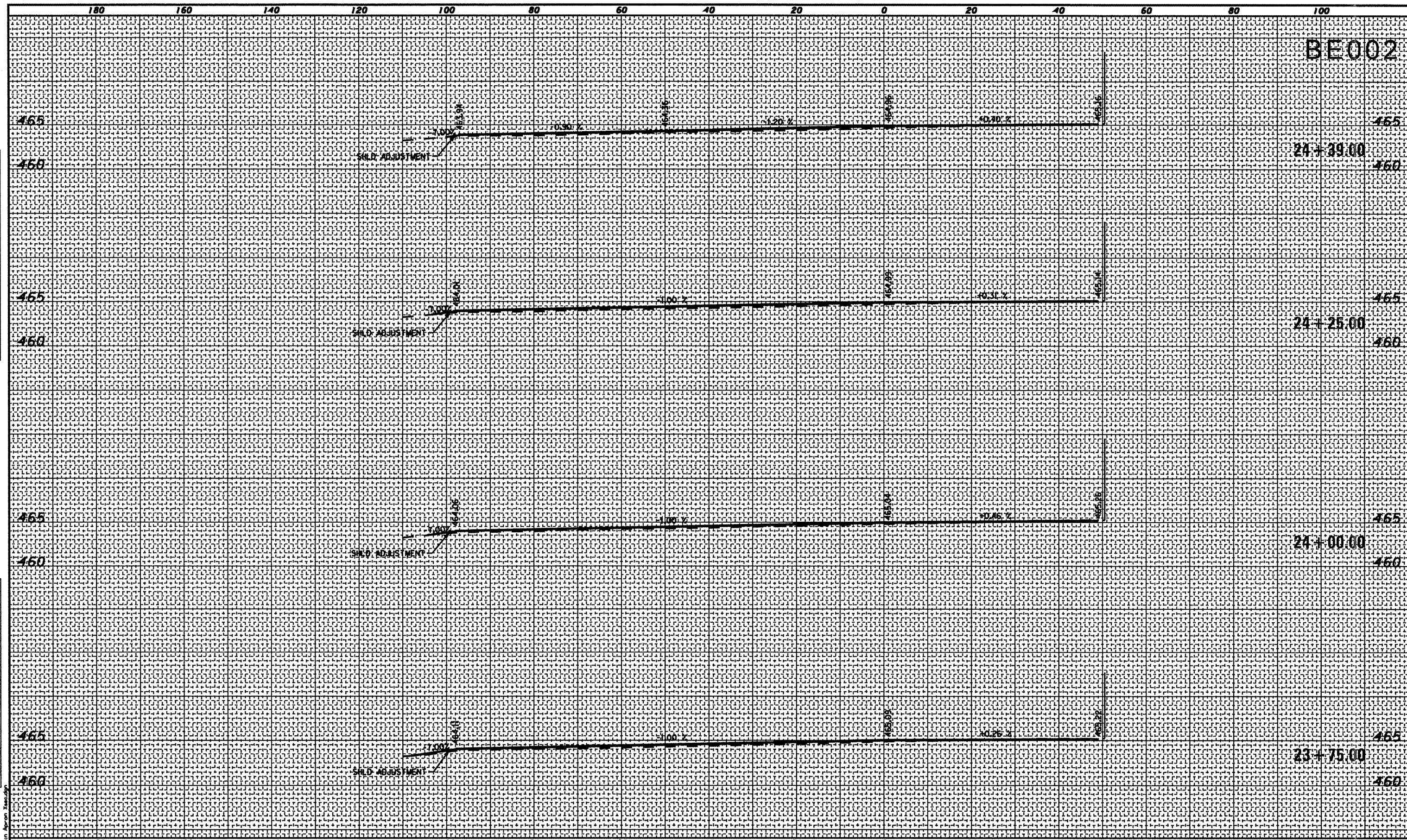


| | |
|---------------|--|
| DATE | |
| BY | |
| FINAL SURVEY | |
| COPIED | |
| PLOTTED | |
| NOTE BOOK | |
| AREAS CHECKED | |

| | |
|-----------------|--|
| DATE | |
| BY | |
| ORIGINAL SURVEY | |
| COPIED | |
| PLOTTED | |
| NOTE BOOK | |
| AREAS CHECKED | |



BE002

| DATE | REVISION |
|------|----------|
| | |
| | |
| | |
| | |
| | |

GREATER BEARDSTOWN MUNICIPAL AIRPORT
CITY OF BEARDSTOWN, BEARDSTOWN, ILLINOIS

| | |
|-----------------------|---------------------|
| FILENAME | Main Apron Xsec.dgn |
| PLOT SCALE | 20,000" / IN. |
| DATE | JULY 8, 2008 |
| SHEET 26 OF 40 SHEETS | |
| LAYOUT | MCM 04/22/08 |
| DRAWN | MCM 04/22/08 |
| REVIEWED | RHB 05/06/08 |



BENTON & ASSOCIATES, INC.
1970 W. LAFAYETTE AVE., JACKSONVILLE IL 62650
(217) 245-4146 (217) 245-4149 FAX
KIRKSVILLE, MISSOURI
MASONIC ILLINOIS
ST. LOUIS, MISSOURI

CROSS SECTIONS - MAIN APRON
STA. 23+75.00 TO STA. 24+39.00

ILL. PROJ. NO. K06-3749 A.I.P. PROJ. NO. 3-17-0004-B12