

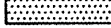
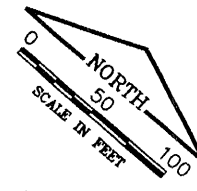
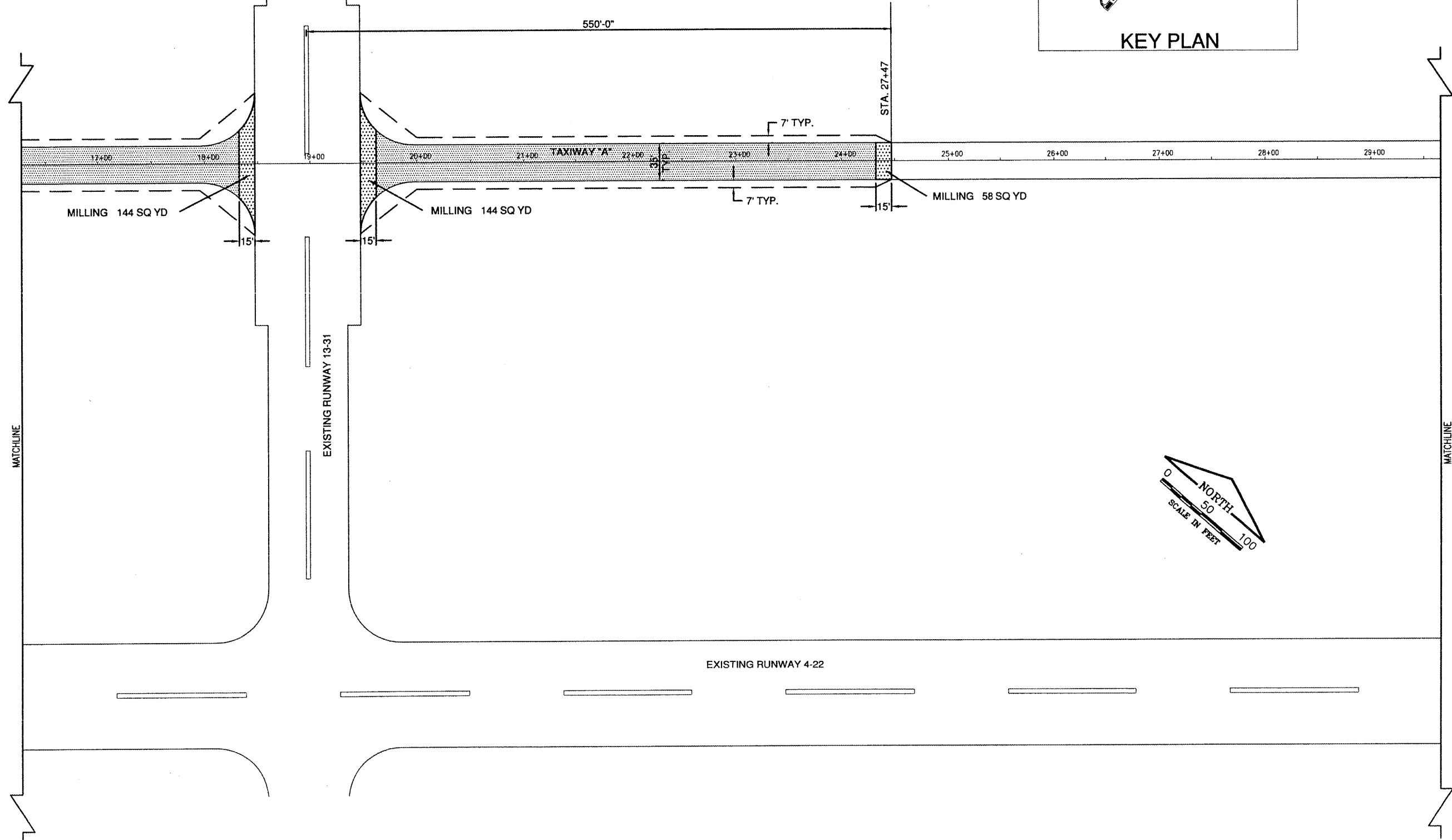
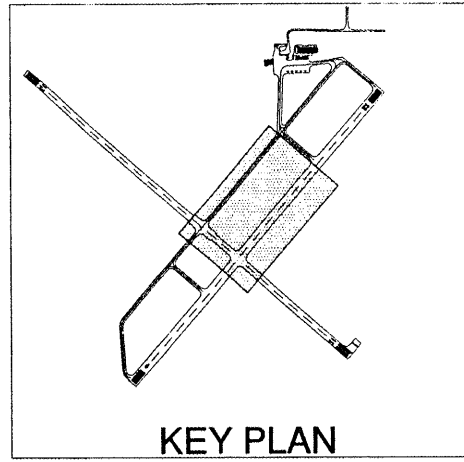


MC022

- LEGEND**
-  PROPOSED PAVEMENT IMPROVEMENTS
 -  PROPOSED SHOULDER ADJUSTMENTS
 -  PROPOSED BUTT JOINTS



DATE	REVISION	BY

THE CITY OF
Mount Carmel
 MT. CARMEL MUNICIPAL AIRPORT
 A.I.P. PROJ.: 3-17-0073-B13
 I.L. PROJ.: AJG-3779

NSL Project No. 08A0016D_0800	04/24/08
Filename R-122CON.DWG	04/24/08
Scale 1" = 50'	xx/xx/xx
Date 04/24/08	xx/xx/xx
LAYOUT	J.S.L.
DRAWN	B.A.K.
REVIEWED	xxx

HANSON
 Hanson Professional Services Inc.
 1525 South Sixth Street
 Springfield, Illinois 62703-2886
 Offices Nationwide

REHAB. PARALLEL TAXIWAY & MARKINGS
 PROPOSED CONSTRUCTION PLAN
 TAXIWAY "A"