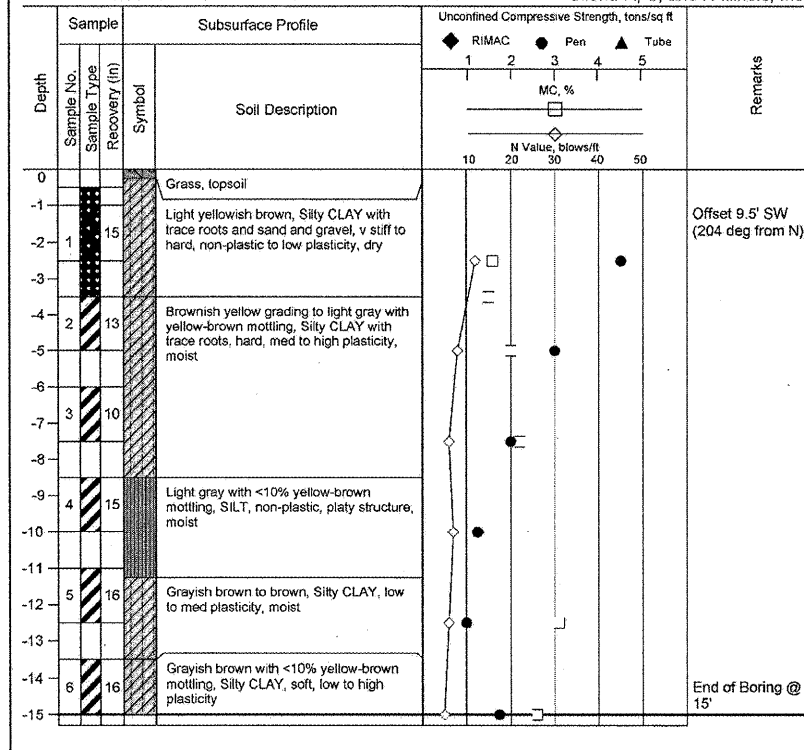




Borehole Log

Boring Number T-A1-2

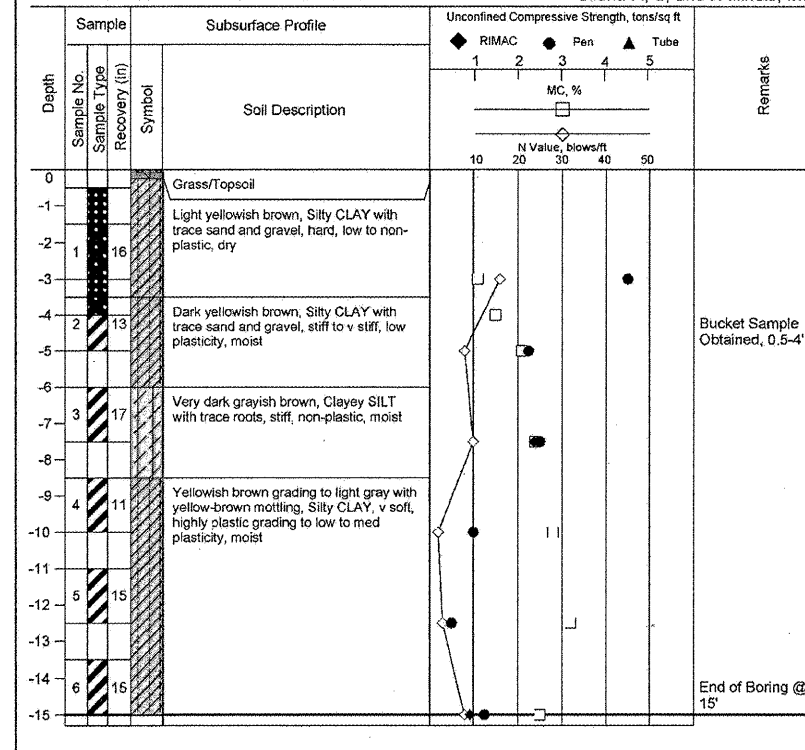
Project: PIA Terminal Expansion Location: Greater Peoria Regional Airport, Peoria, IL
Surface Elevation: 645.6 N: 1456972 E: 2427851 Client: R, S, and H Illinois, Inc.



Borehole Log

Boring Number T-A1-3

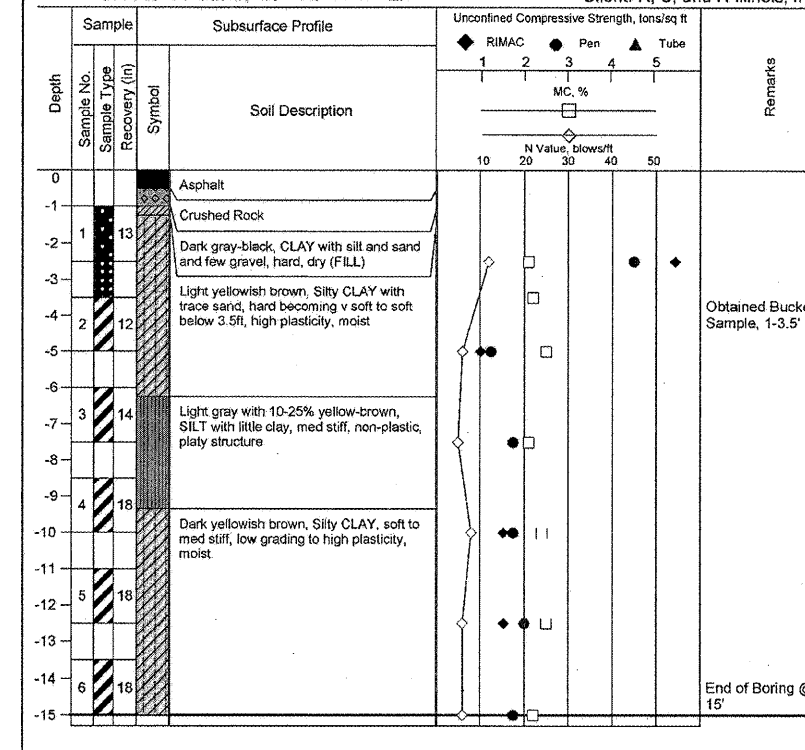
Project: PIA Terminal Expansion Location: Greater Peoria Regional Airport, Peoria, IL
Surface Elevation: 648.1 N: 1456855 E: 2428010 Client: R, S, and H Illinois, Inc.



Borehole Log

Boring Number T-A1-4

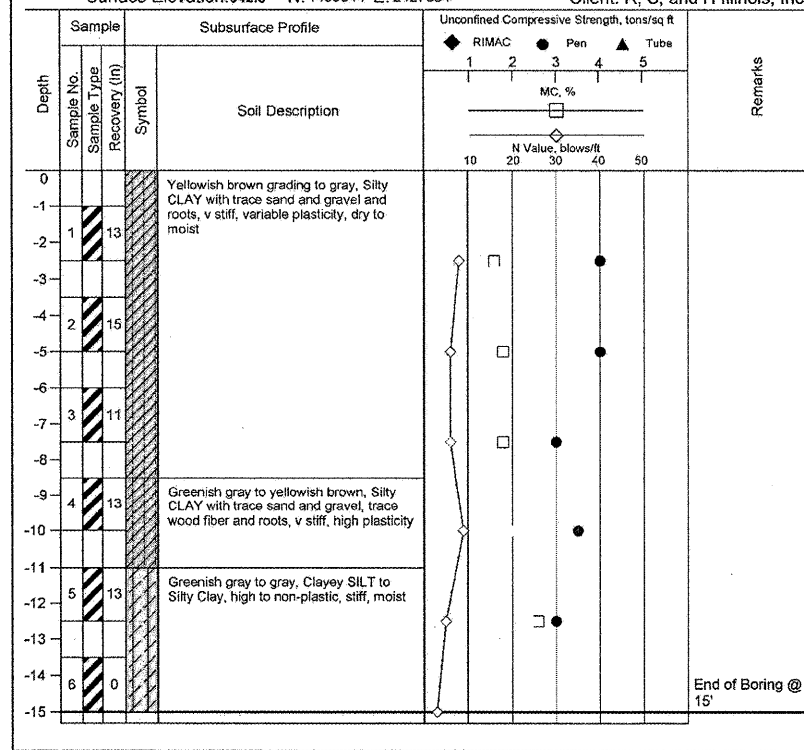
Project: PIA Terminal Expansion Location: Greater Peoria Regional Airport, Peoria, IL
Surface Elevation: 642.9 N: 1456951 E: 2427715 Client: R, S, and H Illinois, Inc.



Borehole Log

Boring Number T-A1-5

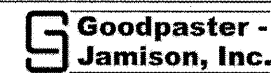
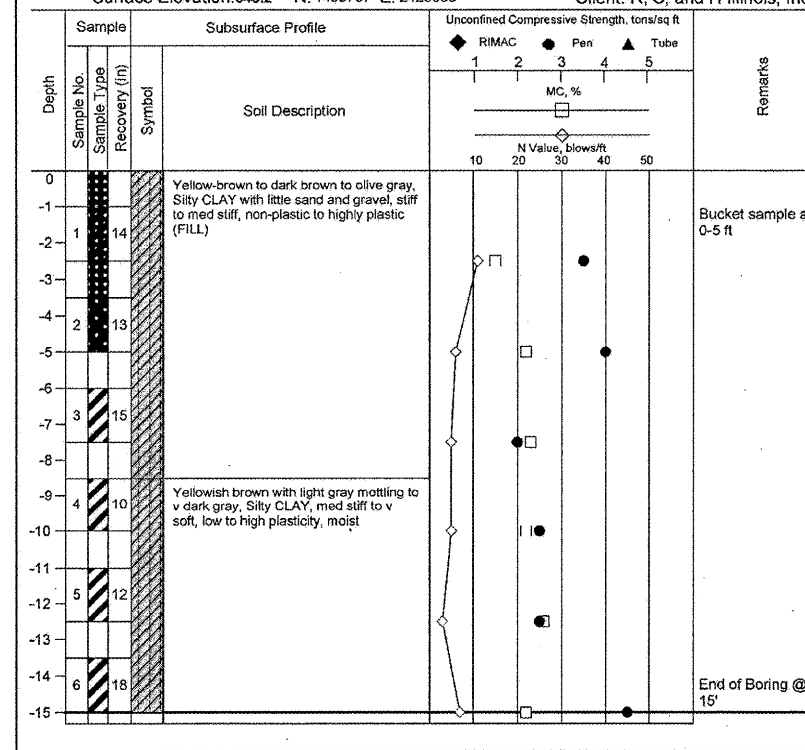
Project: PIA Terminal Expansion Location: Greater Peoria Regional Airport, Peoria, IL
Surface Elevation: 642.8 N: 1456844 E: 2427884 Client: R, S, and H Illinois, Inc.



Borehole Log

Boring Number T-A1-6

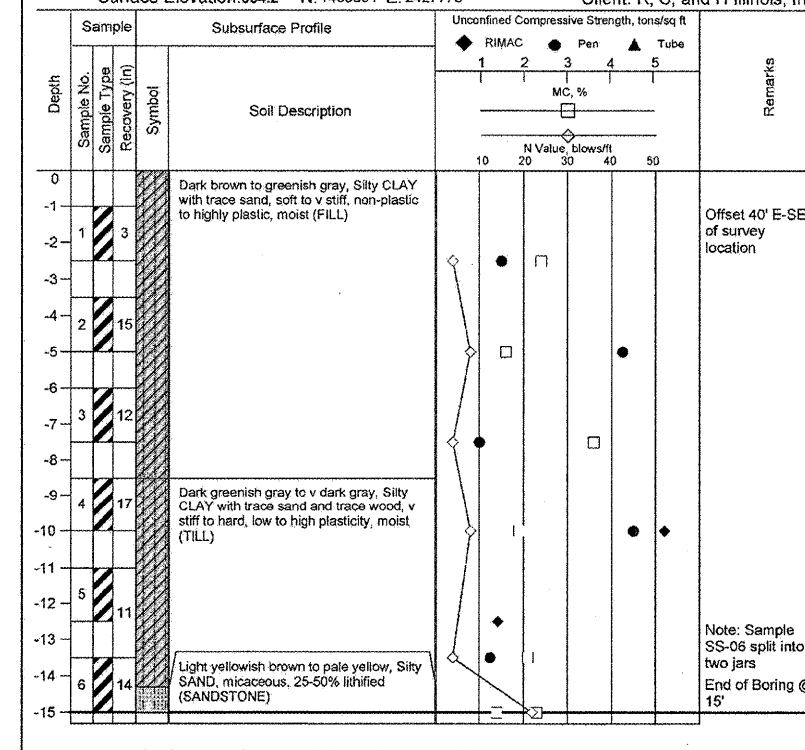
Project: PIA Terminal Expansion Location: Greater Peoria Regional Airport, Peoria, IL
Surface Elevation: 648.2 N: 1456737 E: 2428053 Client: R, S, and H Illinois, Inc.



Borehole Log

Boring Number T-A1-7

Project: PIA Terminal Expansion Location: Greater Peoria Regional Airport, Peoria, IL
Surface Elevation: 634.2 N: 1456801 E: 2427778 Client: R, S, and H Illinois, Inc.



PE087



850 East Diehl Road
Suite 120
Naperville, Illinois 60563
630-505-1991 FAX 630-505-1977
www.rsandh.com



TERMINAL
APRON
EXPANSION

SUBCONSULTANTS

PSA Dewberry

STS AECOM

IL PROJECT: PIA-3812
AIP PROJECT: 3-17-0080-46

REVISIONS

NO.	DESCRIPTION	DATE

DATE ISSUED: 06/27/08
REVIEWED BY: PCB
DRAWN BY: MJL
DESIGNED BY: NDO

AEP PROJECT NUMBER

213-6945-000

© 2008 REYNOLDS, SMITH AND HILLS INC.

SHEET TITLE

GEOTECHNICAL
BORING LOGS

SHEET NUMBER

9 OF 43

ISSUED FOR
BID DOCUMENTS