

PE087



850 East Diehl Road  
Suite 120  
Naperville, Illinois 60563  
630-505-1991 FAX 630-505-1977  
www.rsandh.com



**TERMINAL  
APRON  
EXPANSION**

SUBCONSULTANTS

PSA Dewberry

STS AECOM

IL PROJECT: PIA-3812  
AIP PROJECT: 3-17-0080-46

**REVISIONS**

NO.	DESCRIPTION	DATE

DATE ISSUED: 06/27/08  
REVIEWED BY: PCB  
DRAWN BY: MJL  
DESIGNED BY: NDO

AEP PROJECT NUMBER  
**213-6945-000**

© 2008 REYNOLDS, SMITH AND HILLS INC.

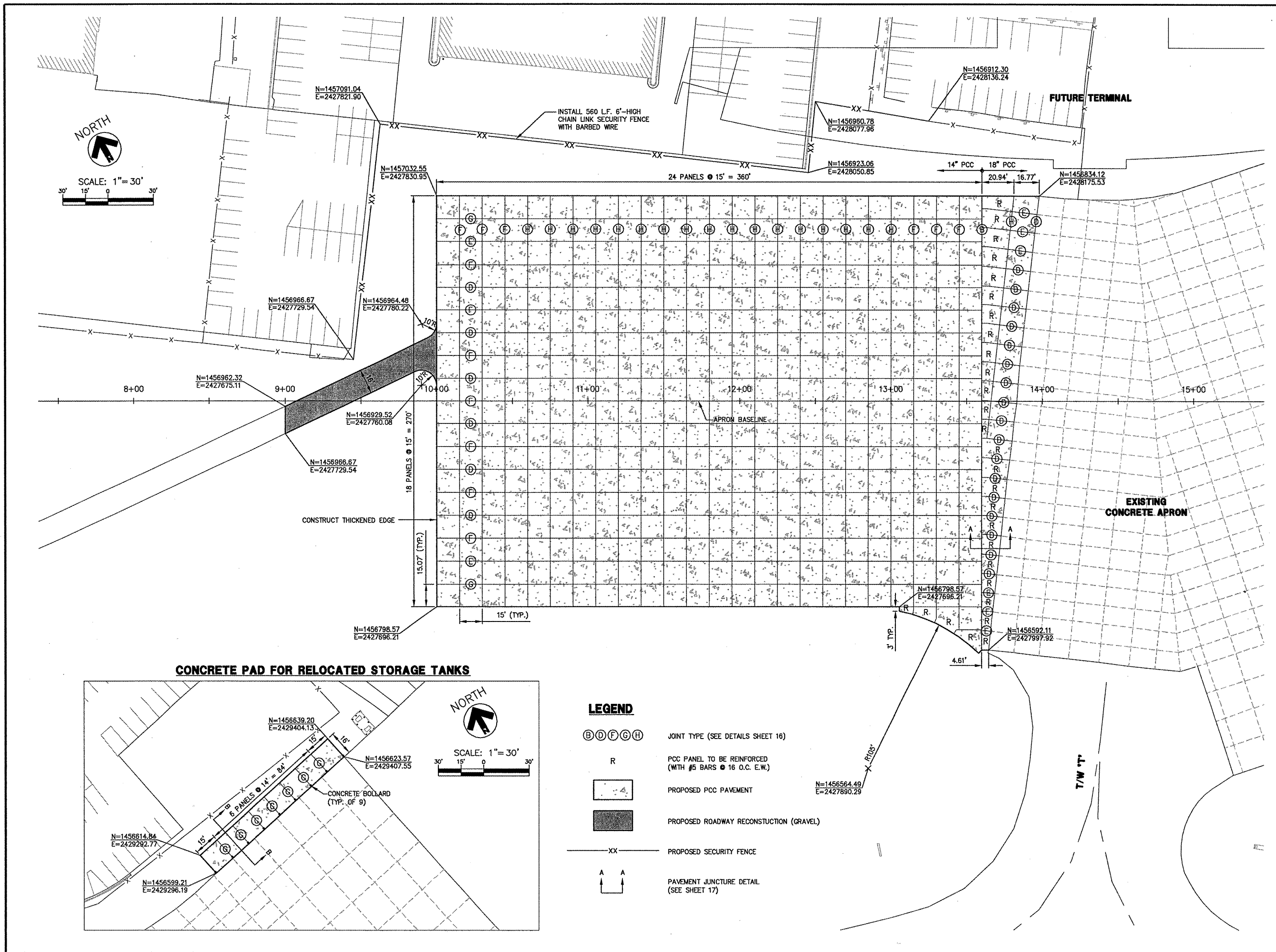
SHEET TITLE

**GEOMETRY AND  
JOINT LAYOUT  
PLAN**

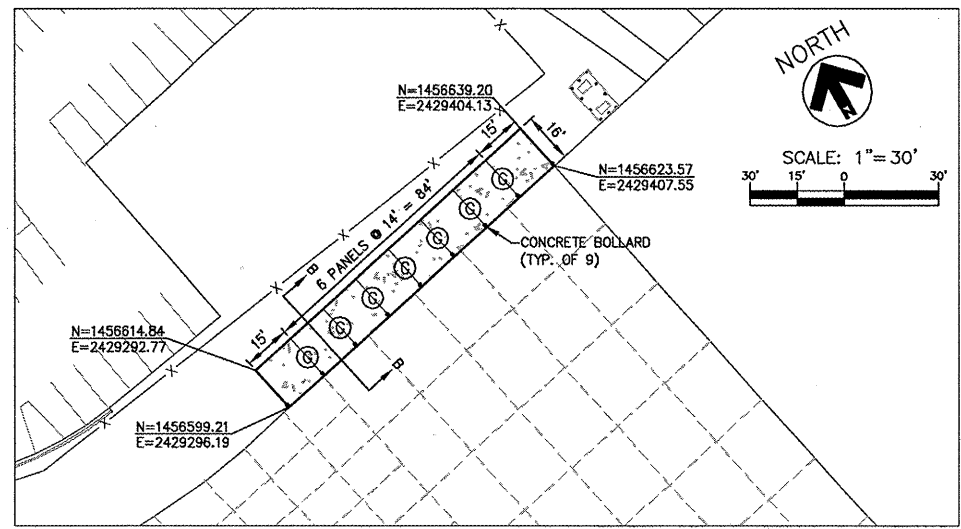
SHEET NUMBER

**14 OF 43**

**ISSUED FOR  
BID DOCUMENTS**



**CONCRETE PAD FOR RELOCATED STORAGE TANKS**



**LEGEND**

- (B) (D) (F) (G) (H) JOINT TYPE (SEE DETAILS SHEET 16)
- R PCC PANEL TO BE REINFORCED (WITH #5 BARS @ 16 O.C. E.W.)
- [Pattern] PROPOSED PCC PAVEMENT
- [Pattern] PROPOSED ROADWAY RECONSTRUCTION (GRAVEL)
- XX PROPOSED SECURITY FENCE
- A A PAVEMENT JUNCTURE DETAIL (SEE SHEET 17)