

SE003

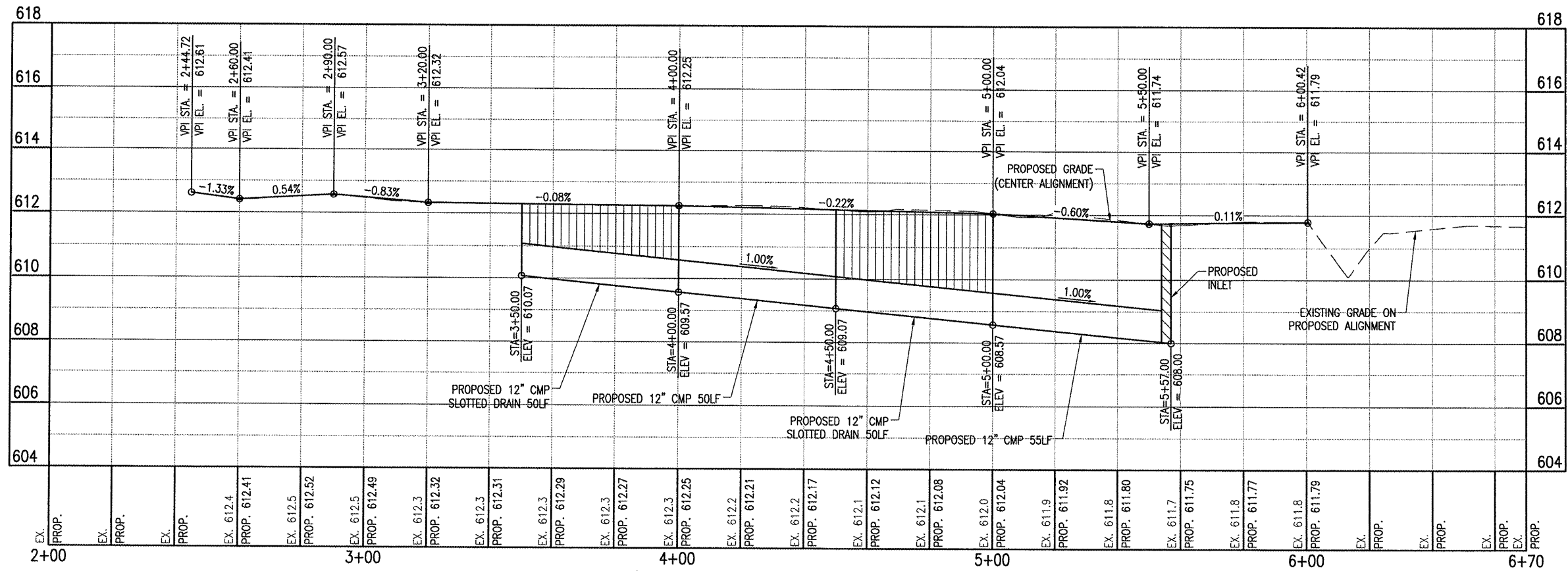
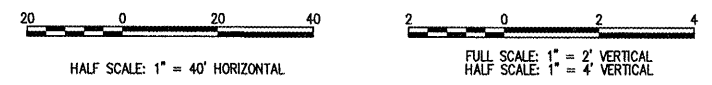
NOTE: ELEVATIONS PROVIDED AT LOCATIONS THAT MATCH EXISTING PAVEMENTS OR BUILDING FOUNDATIONS ARE FOR REFERENCE ONLY. THE CONTRACTOR SHALL CONSTRUCT THE PROPOSED BUTT JOINTS FLUSH WITH EXISTING AS INTENDED. CONTRACTOR IS RESPONSIBLE FOR VERIFYING EXISTING ELEVATIONS AT MATCH POINTS.

LEGEND

EXISTING PAVEMENT

PROPOSED BITUMINOUS PAVEMENT

PROPOSED SPOT ELEVATION



BY	
REVISION	
DATE	
SHELBY COUNTY AIRPORT SHELBYVILLE, IL	
I.L. PROJ.: 2H0-3781 A.I.P. PROJ.: 3-17-0093-B8	
Revision No: 827-03THG0 Filename: R-702PNP.DWG Scale: 1"=20' Date: 06/20/08	LAYOUT: SSK 06/23/08 DRAWN: SSK 06/23/08 REVIEWED: JKW 06/24/08
<p>© Copyright Hanson Professional Services, Inc. 2008 Hanson Professional Services, Inc. 255 S. Main Street Springfield, Illinois 62703-2886 Offices Nationwide</p>	
REHABILITATE T-HANGAR PAVEMENTS	PROPOSED PLAN AND PROFILE CENTER ALIGNMENT
10 10 of 14 sheets	