

F.A.P. RTE.	SECTION	COUNTY	TOTAL SHEETS	SHEET NO.
567	5R-RS-3	KANE	30	1
FED. ROAD DIST. NO. 1		ILLINOIS	FED AID PROJECT	
D-91-307-11				
CONTRACT NO. 60N37				

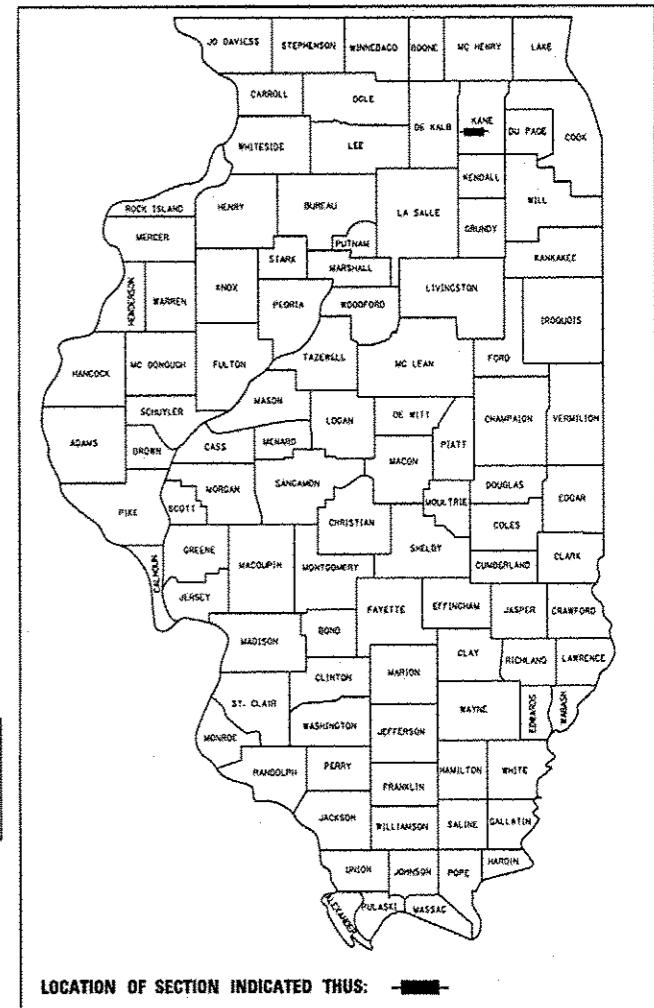
STATE OF ILLINOIS
DEPARTMENT OF TRANSPORTATION
DIVISION OF HIGHWAYS

PROPOSED HIGHWAY PLANS

F.A.P 567 (IL ROUTE 38)
SECTION 5R-RS-3
WEST COUNTY LINE ROAD TO IL ROUTE 47
RESURFACING (3P)
KANE COUNTY
C-91-307-11

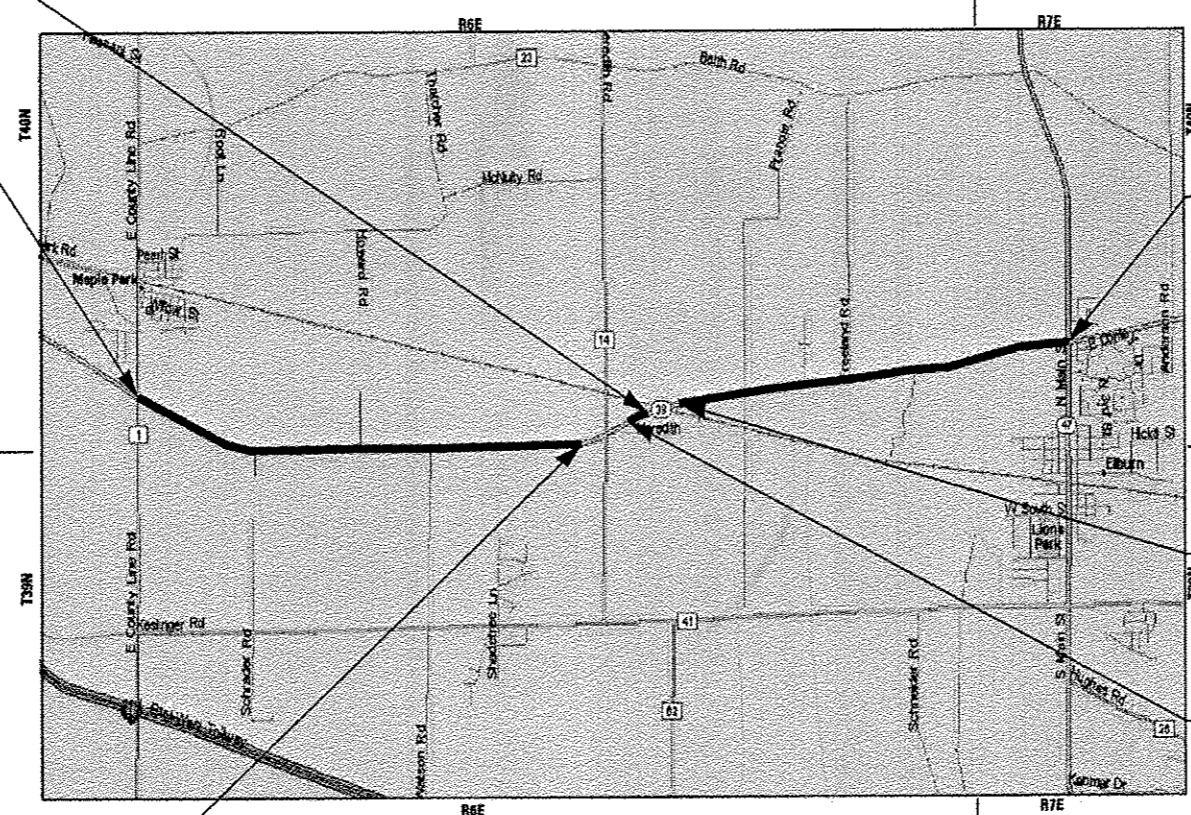
FOR INDEX OF SHEETS, SEE SHEET NO. 2

IMPROVEMENT LOCATED WITHIN
THE VILLAGE OF ELBURN AND
UNINCORPORATED KANE COUNTY



IL ROUTE 38
OMISSION BEGINS
STA. 413 + 78

IL ROUTE 38
IMPROVEMENT BEGINS
STA. 224 + 93



IL ROUTE 38
IMPROVEMENT ENDS
STA. 569 + 18

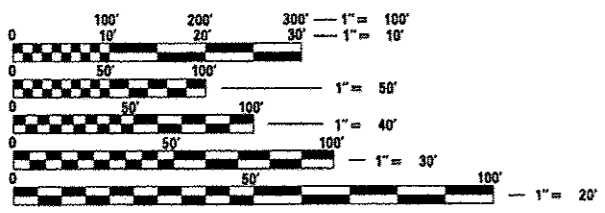
IL ROUTE 38
OMISSION ENDS
STA. 418 + 51

IL ROUTE 38
OMISSION ENDS
STA. 401 + 53

IL ROUTE 38
OMISSION BEGINS
STA. 382 + 63

VIRGIL & CAMPTON TOWNSHIPS
GROSS LENGTH OF IMPROVEMENT = 34,425 LF OR 6.520 MILES
NET LENGTH OF IMPROVEMENT = 34,062 LF OR 6.072 MILES

TRAFFIC DATA
IL ROUTE 38 (MINOR ARTERIAL)
2013 ADT = 7,600 - 8,400
SPEED LIMIT = 55 MPH



FULL SIZE PLANS HAVE BEEN PREPARED USING STANDARD
ENGINEERING SCALES. REDUCED SIZED PLANS WILL NOT
CONFORM TO STANDARD SCALES. IN MAKING MEASUREMENTS
ON REDUCED PLANS, THE ABOVE SCALES MAY BE USED.

Call Before You Dig
JULIE
ILLINOIS ONE-CALL SYSTEM

CONTACT JULIE AT 811 OR 800-892-0123
WITH THE FOLLOWING:
COUNTY = KANE
CITY-TOWNSHIP = ELBURN - VIRGIL & CAMPTON
SEC. & 1/4 SEC. NO. = 31-36
48 HOURS (2 working days) BEFORE YOU DIG

DISTRICT ONE -
PROJECT MANAGER: KEN ENG (847) 705-4247 (IDOT)
PROJECT ENGINEER: ROBERT LENZINI (815) 459-1260 (BAXTER & WOODMAN)
CONTRACT NO. 60N37

BAXTER & WOODMAN
Consulting Engineers

TODD L. HOFMAN
62-058724
LICENSED PROFESSIONAL ENGINEER
OF ILLINOIS
PROJECT ENGINEER
"LICENSE EXPIRES 11-30-15"

STATE OF ILLINOIS
DEPARTMENT OF TRANSPORTATION
DIVISION OF HIGHWAYS

SUBMITTED May 21 20 14
John F. Estrom
DEPUTY DIRECTOR OF HIGHWAYS, REGION ENGINEER

June 27 20 14
John D. Baranzolli, P.E.
acting ENGINEER OF DESIGN AND ENVIRONMENT

June 27 20 14
Omer Osman, P.E.
DIRECTOR OF HIGHWAYS, CHIEF ENGINEER

PRINTED BY THE AUTHORITY
OF THE STATE OF ILLINOIS

COPYRIGHT © 2010 BY BAXTER & WOODMAN, INC.
 STATE OF ILLINOIS - PROFESSIONAL DESIGN FIRM
 LICENSE NO. 184-003271 - EXPIRES 7/30/2014
 5/2/2014 4:44:58 PM
 \\p01s10053\p01s10053-1\Drawings\60N37-1\60N37-1.dwg
 Plotted by: R. Lenzini