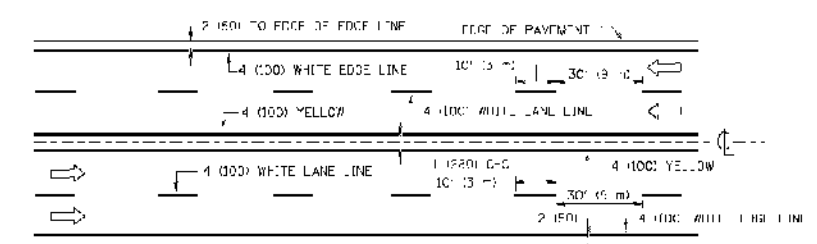
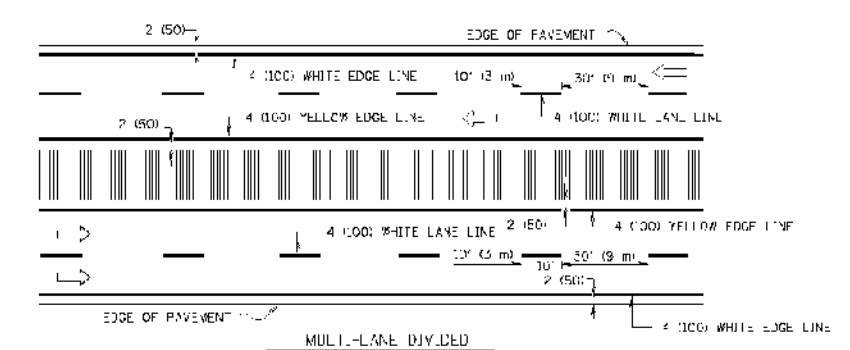


2-LANE ROADWAY

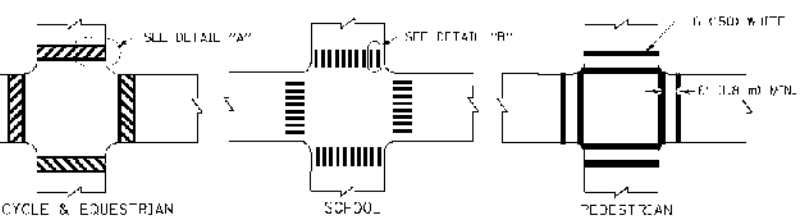


MULTILANE UNDIVIDED

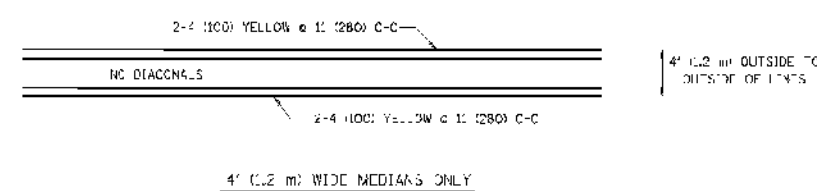


MULTILANE DIVIDED WITH MULTIPLE MEDIANS

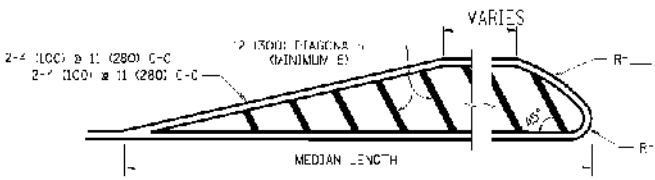
TYPICAL LANE AND EDGE LINE MARKING



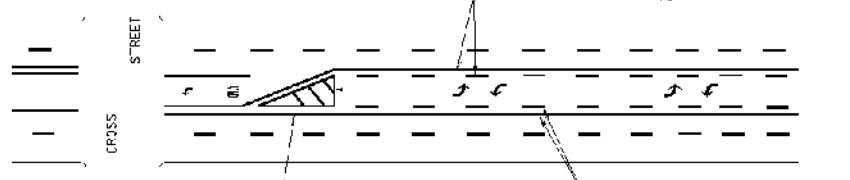
TYPICAL CROSSWALK MARKING



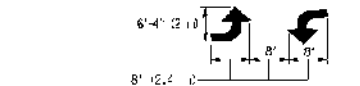
4' (1.22 m) WIDE MEDIANS ONLY



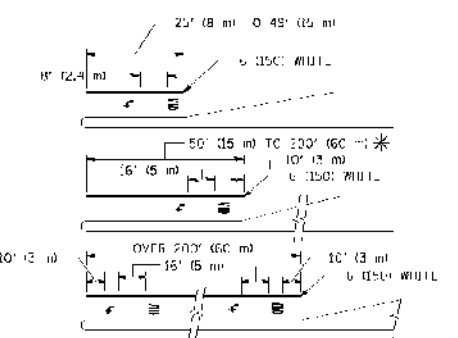
MEDIANS OVER 4' (1.22 m) WIDE



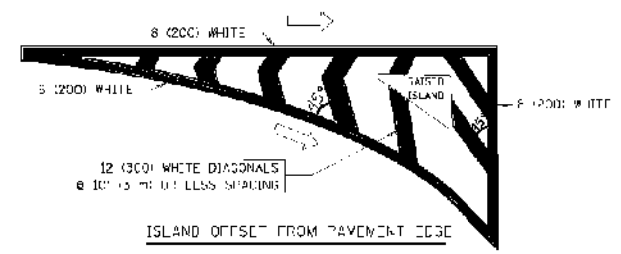
TYPICAL PAINTED MEDIAN MARKING



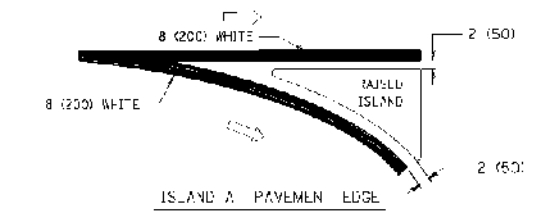
TYPICAL LEFT (OR RIGHT) TURN LANE



TYPICAL TURN LANE MARKING



TYPICAL ISLAND MARKING



ISLAND AT PAVEMENT EDGE

TYPE OF MARKING	WIDTH OF LINE	PATTERN	COLOR	SPACING / REMARKS
CENTRELINE ON 2 LANE PAVEMENT	4' (1.22)	SKIP-DASH	YELLOW	10' (3.05) DIA WITH 30' (9.14) SPACE
CENTRELINE ON MULTILANE UNDIVIDED PAVEMENT	2' (0.61)	SOLID	YELLOW	11' (3.35) C-C
NO PASSING ZONE (NFS) FOR ONE DIRECTION	4' (1.22)	SOLID	YELLOW	5/2' (1.40) C-C FROM SKIP-DASH CENTERLINE 1' (0.30) C-C 0.5' (0.15) SKIP-DASH CENTERLINE BETWEEN
4" (1.02) LINES	4' (1.22) 6' (1.83) ON FREEWAYS	SKIP-DASH SKIP-DASH	WHITE WHITE	10' (3.05) DIA WITH 30' (9.14) SPACE
DOTTED LINES (EXTENSIONS OF CENTERLINE OR TURN LANE MARKINGS)	SAME AS LINE BEING EXTENDED	SKIP-DASH	SAME AS LINE BEING EXTENDED	2' (0.61) LINE WITH 6' (1.83) TO SPACE
TURN LINES	4' (1.22)	SOLID	WHITE	CONTINUED WITH TURN ARROWS IN YELLOW. EDGE LINES ARE NOT USED NEXT TO TURN LINES
TURN LANE MARKINGS	6' (1.83) LONG FULL SET LETTERS & SYMBOLS 12' (3.66) C-C	SOLID	WHITE	SEE TYPICAL TURN LANE MARKING DETAIL
TWO WAY LEFT TURN MARKING	2' (0.61) EACH DIRECTION 8' (2.44) LEFT ARROW IN PAIRS	SKIP-DASH AND SOLID IN PAIRS	YELLOW WHITE	10' (3.05) DIA WITH 30' (9.14) SPACE FOR SKIP-DASH 5/2' (1.40) C-C BETWEEN SOLID LINE AND SKIP-DASH LINE SEE TYPICAL TWO-WAY LEFT TURN MARKING DETAIL
CROSSWALK LINES (PEDESTRIAN), DIAGONALS (BIKE & EQUESTRIAN), LONGITUDINAL BARS (SHOULDER)	2' (0.61) OR 4' (1.22) 12' (3.66) OR 4' (1.22) 12' (3.66) OR 8' (2.44)	SOLID SOLID SOLID	WHITE WHITE WHITE	NOT LESS THAN 6' (1.83) APART 2' (0.61) APART 2' (0.61) APART SEE TYPICAL CROSSWALK MARKING DETAIL
STOP LINES	24' (7.32)	SOLID	WHITE	PARALLEL TO CROSSWALK IF PRESENT, OTHERWISE PLACE AT DESIRED STOPPING POINT, PARALLEL TO CROSSWALK CENTERLINE WHERE POSSIBLE
PAINTED MEDIANS	2' (0.61) WITH 12' (3.66) DIAGONALS @ 45° NO DIAGONALS USED FOR 4' (1.22) WIDE MEDIANS	SOLID	YELLOW WHITE WHITE	11' (3.35) C-C TO 11' (3.35) DIA SEE TYPICAL PAINTED MEDIAN MARKING WHITE ONE WAY TRAFFIC
CORE MARKING AND SIDEWALK MARKING TYPES	8' (2.44) WITH 12' (3.66) DIAGONALS @ 45°	SOLID	WHITE	DIAGONALS: 15' (4.57) C-C LESS THAN 30 MPH (48 km/h) 20' (6.10) C-C 30 MPH (48 km/h) TO 45 MPH (72 km/h) 30' (9.14) C-C OVER 45 MPH (72 km/h)
RAILROAD CROSSING	24' (7.32) TRANSVERSE BARS 15' (4.57) C-C LETTERS 16' (4.88) DIA 12' (3.66) DIA	SOLID	WHITE	SEE STATE STANDARD (8000) AREA OF 15.6 SQ. FT. (1.5 m²) EACH 12' (3.66) DIA 1. (0.30 m²)
SHOULDER DIAGONALS	12' (3.66) @ 45°	SOLID	WHITE - RIGHT YELLOW - LEFT	20' (6.10) C-C LESS THAN 30 MPH (48 km/h) 25' (7.62) C-C 30 MPH (48 km/h) TO 45 MPH (72 km/h) 150' (45.72) C-C OVER 45 MPH (72 km/h)

FOR FURTHER DETAILS OF PAVEMENT MARKING REFER TO STANDARD SPECIFICATIONS FOR ROAD AND BRIDGE CONSTRUCTION AND STATE STANDARD 80001.

All dimensions are in inches (millimeters) unless otherwise shown.

COPYRIGHT © 2011 BY BAXTER & WOODMAN, INC.  
 STATE OF ILLINOIS - PROFESSIONAL DESIGN FIRM  
 216 S. WASHINGTON ST., SUITE 200, CHICAGO, IL 60604  
 312.467.1200  
 5/22/2014  
 \\c:\p\box\woodman\projects\CrystalLake\LDOT\00053-40-Design\WO-16-138-Detail-TC-11FF.dgn

FILE NAME	USER NAME	DESIGNED BY	REVISED	DATE	SCALE	DATE	STATE OF ILLINOIS DEPARTMENT OF TRANSPORTATION	DISTRICT ONE TYPICAL PAVEMENT MARKINGS	SHEET NO. 26
TC-11FF.dgn	EVFRS	EVFRS	REVISED	03-19-90	AS SHOWN	03-19-90	STATE OF ILLINOIS DEPARTMENT OF TRANSPORTATION	DISTRICT ONE TYPICAL PAVEMENT MARKINGS	SHEET NO. 26
SCALE: NONE								SHEET NO. 1 OF 1 SHEETS	STA. TO STA.