

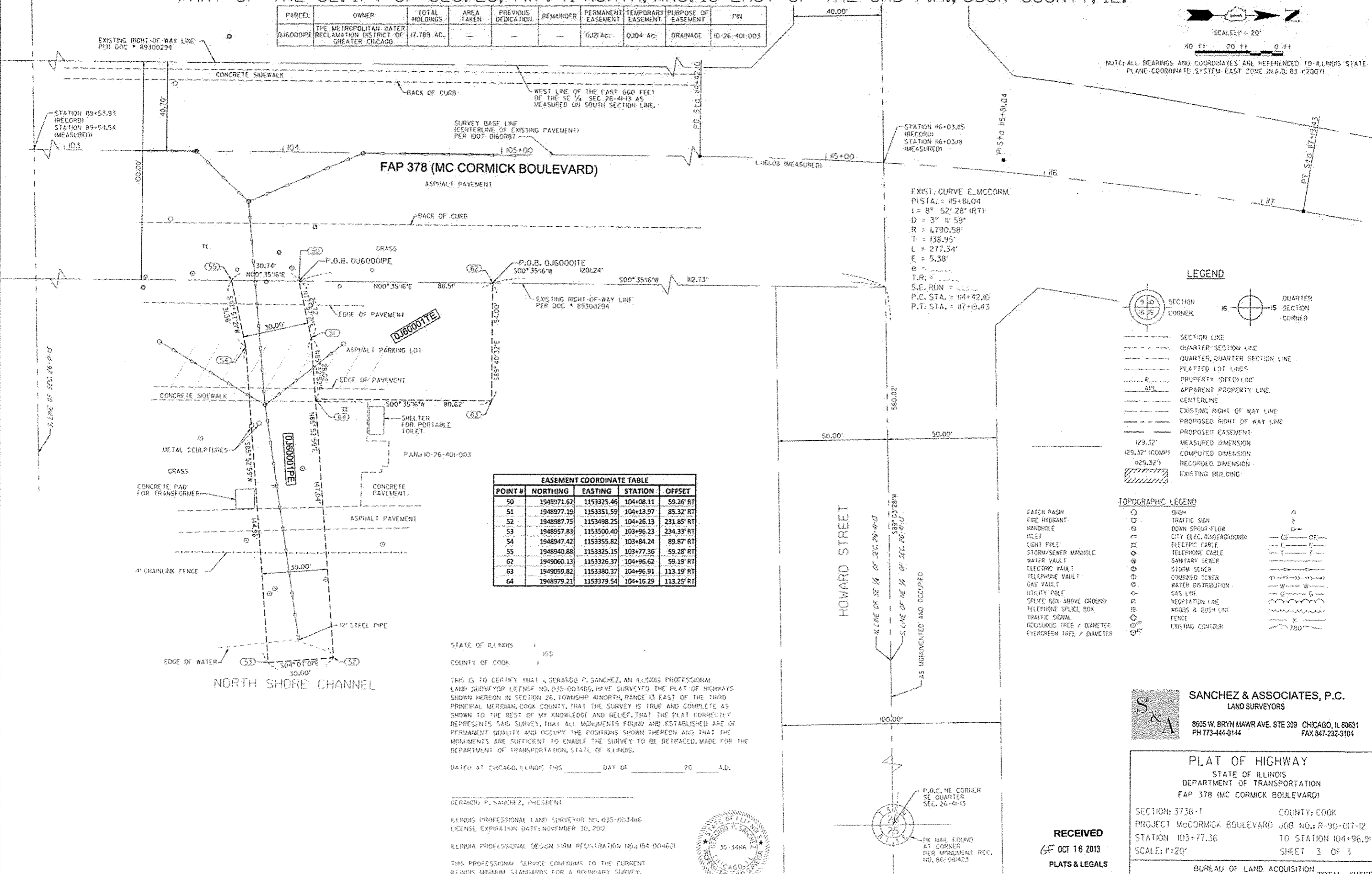
PART OF THE SE. 1/4 OF SEC. 26, TWP. 41 NORTH, RNG. 13 EAST OF THE 3RD P.M., COOK COUNTY, IL.

PARCEL	OWNER	TOTAL HOLDINGS	AREA TAKEN	PREVIOUS DEDICATION	REMAINDER	PERMANENT EASEMENT	TEMPORARY EASEMENT	PURPOSE OF EASEMENT	PN
0J60001PE	THE METROPOLITAN WATER RECLAMATION DISTRICT OF GREATER CHICAGO	17,789 AC.				0J21 AC.	0J04 AC.	DRAINAGE	10-26-401-003



SCALE 1" = 20'
40 FT 20 FT 0 FT

NOTE: ALL BEARINGS AND COORDINATES ARE REFERENCED TO ILLINOIS STATE PLANE COORDINATE SYSTEM EAST ZONE (N.A.D. 83) (2007)



EXIST. CURVE E. MCCORM.
P.I. STA. = 15+84.04
L = 8° 52' 28" (RT)
D = 3° 11' 59"
R = 1,790.58'
T = 158.95'
L = 277.34'
E = 5.38'
e = 0'
T.R. = 0'
S.E. RUN = 104+42.10
P.C. STA. = 104+42.10
P.T. STA. = 117+19.43

POINT #	NORTHING	EASTING	STATION	OFFSET
50	1948971.62	1153325.46	104+08.11	59.26' RT
51	1948977.19	1153351.59	104+13.97	85.32' RT
52	1948987.75	1153498.25	104+26.13	231.85' RT
53	1948957.83	1153500.40	103+96.23	234.33' RT
54	1948947.42	1153355.82	103+84.24	89.87' RT
55	1948940.88	1153325.15	103+77.36	59.28' RT
62	1949060.13	1153326.37	104+96.62	59.19' RT
63	1949059.82	1153380.37	104+96.91	113.19' RT
64	1948979.21	1153379.54	104+16.29	113.25' RT

LEGEND

- SECTION CORNER
- QUARTER CORNER
- SECTION LINE
- QUARTER SECTION LINE
- QUARTER, QUARTER SECTION LINE
- PLATTED LOT LINES
- PROPERTY (DEED) LINE
- APL
- APPARENT PROPERTY LINE
- CENTERLINE
- EXISTING RIGHT OF WAY LINE
- PROPOSED RIGHT OF WAY LINE
- PROPOSED EASEMENT
- MEASURED DIMENSION
- COMPUTED DIMENSION
- RECORDED DIMENSION
- EXISTING BUILDING

TOPOGRAPHIC LEGEND

- BUSH
- TRAFFIC SIGN
- FIRE HYDRANT
- DOWN SPOUT-FLOW
- MANHOLE
- CITY ELEC. UNDERGROUND
- ELECTRIC CABLE
- TELEPHONE CABLE
- SANITARY SEWER
- STORM SEWER
- ELECTRIC VAULT
- TELEPHONE VAULT
- COMBINED SEWER
- WATER DISTRIBUTION
- GAS LINE
- VEGETATION LINE
- WOODS & BUSH LINE
- FENCE
- EXISTING CONTOUR

STATE OF ILLINOIS
COUNTY OF COOK

THIS IS TO CERTIFY THAT GERARDO P. SANCHEZ, AN ILLINOIS PROFESSIONAL LAND SURVEYOR LICENSE NO. 035-003486, HAVE SURVEYED THE PLAT OF HIGHWAYS SHOWN HEREON IN SECTION 26, TOWNSHIP 41 NORTH, RANGE 13 EAST OF THE THIRD PRINCIPAL MERIDIAN, COOK COUNTY, THAT THE SURVEY IS TRUE AND COMPLETE AS SHOWN TO THE BEST OF MY KNOWLEDGE AND BELIEF, THAT THE PLAT CORRECTLY REPRESENTS SAID SURVEY, THAT ALL MONUMENTS FOUND AND ESTABLISHED ARE OF PERMANENT QUALITY AND OCCUPY THE POSITIONS SHOWN THEREON AND THAT THE MONUMENTS ARE SUFFICIENT TO ENABLE THE SURVEY TO BE RETRACED, MADE FOR THE DEPARTMENT OF TRANSPORTATION, STATE OF ILLINOIS.

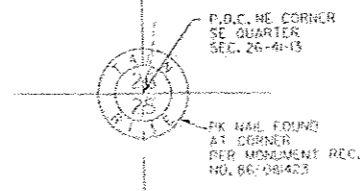
DATED AT CHICAGO, ILLINOIS THIS _____ DAY OF _____ 20____ A.D.

GERARDO P. SANCHEZ, PRESIDENT

ILLINOIS PROFESSIONAL LAND SURVEYOR NO. 035-003486
LICENSE EXPIRATION DATE: NOVEMBER 30, 2012

ILLINOIS PROFESSIONAL DESIGN FIRM REGISTRATION NO. 184-004601

THIS PROFESSIONAL SERVICE CONFORMS TO THE CURRENT ILLINOIS MINIMUM STANDARDS FOR A BOUNDARY SURVEY.



SANCHEZ & ASSOCIATES, P.C.
LAND SURVEYORS
8605 W. BRYN MAWR AVE. STE 309 CHICAGO, IL 60631
PH 773-444-0144 FAX 847-232-3104

PLAT OF HIGHWAY
STATE OF ILLINOIS
DEPARTMENT OF TRANSPORTATION
FAP 378 (MC CORMICK BOULEVARD)

SECTION: 3738-1 COUNTY: COOK
PROJECT: MCCORMICK BOULEVARD JOB NO.: R-90-017-12
STATION 103+77.36 TO STATION 104+96.91
SCALE: 1"=20' SHEET 3 OF 3

BUREAU OF LAND ACQUISITION TOTAL SHEET
201WEST CENTER COURT SHEETS NO.
SCHAUMBURG, ILLINOIS 60196 28 18

RECEIVED
OCT 16 2013
PLATS & LEGALS

MC CORMICK BOULEVARD

COOK COUNTY

REVISION DATE: 1-17-12 1-20-12 8-28-12 9-24-12 10-10-13 REVISION: PER COMMENTS. MADE BY: SANCHEZ AND ASSOCIATES, P.C.