

F.A.P. RTE.	SECTION	COUNTY	TOTAL SHEETS	SHEET NO.
345	106-S-N-2	KANE	147	1
ILLINOIS CONTRACT NO. 60T09				

D-91-297-12

STATE OF ILLINOIS
DEPARTMENT OF TRANSPORTATION
DIVISION OF HIGHWAYS

**PROPOSED
HIGHWAY PLANS**

FAP ROUTE 345 (US ROUTE 20)
AT IL ROUTE 47 /IL ROUTE 72 (SOUTH JUNCTION)
(SOUTH JUNCTION)

LEFT TURN LANES, TRAFFIC SIGNAL MODERNIZATION & LIGHTING

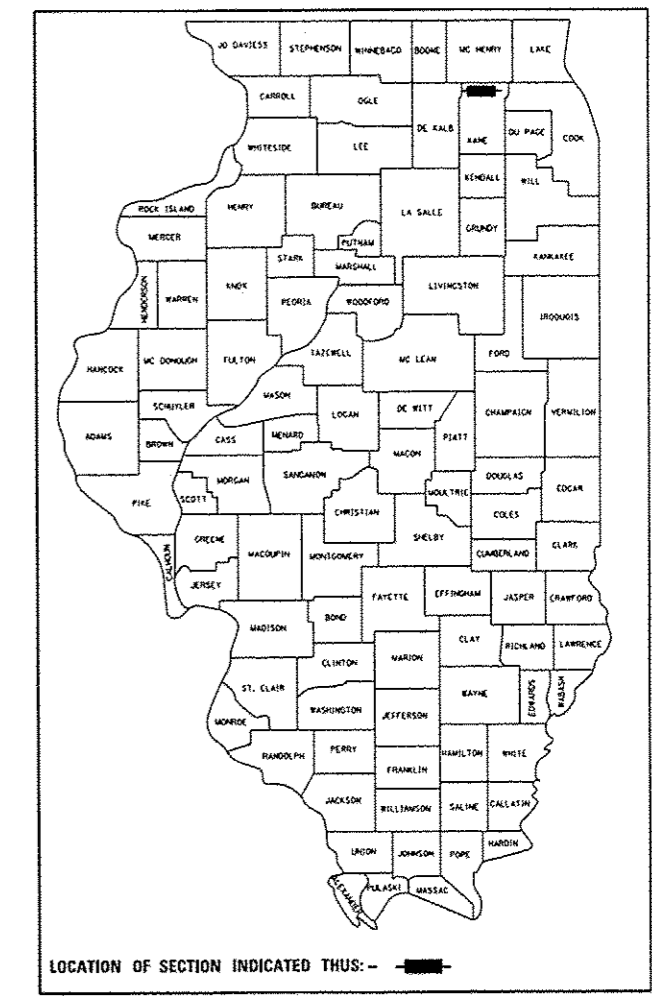
PROJECT: ACCM-0345 (060)
STRUCTURE NO: 045-0260 & 045-0228
KANE COUNTY
C-91-297-12

SECTION 106-S-N-2

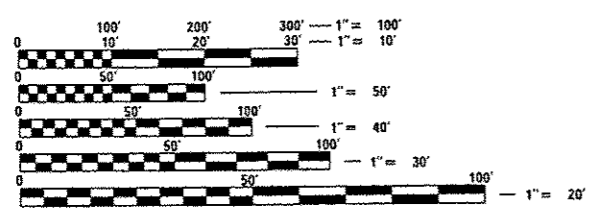
FOR INDEX OF SHEETS, SEE SHEET NO. 2

PROJECT LOCATED IN
VILLAGE OF PINGREE GROVE

FUNCTIONAL CLASSIFICATION
OTHER PRINCIPAL ARTERIAL
EAST LEG: 2011 ADT=7,550 POSTED SPEED=55 MPH
WEST LEG: 2011 ADT=8,800 POSTED SPEED=55 MPH
NORTH LEG: 2011 ADT=15,500 POSTED SPEED=45 MPH
SOUTH LEG: 2011 ADT=15,500 POSTED SPEED=45 MPH



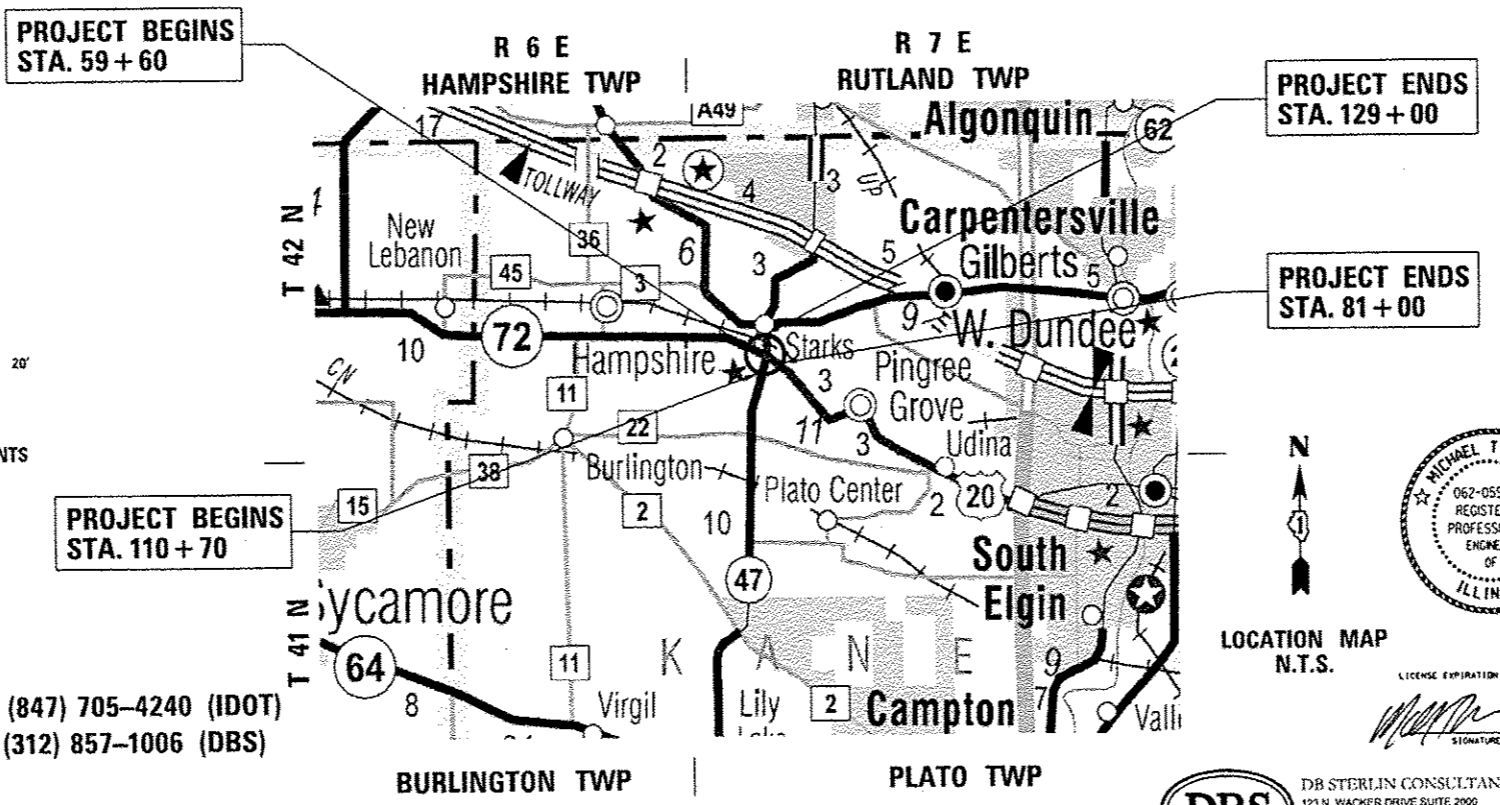
LOCATION OF SECTION INDICATED THUS: - ■ -



FULL SIZE PLANS HAVE BEEN PREPARED USING STANDARD ENGINEERING SCALES. REDUCED SIZED PLANS WILL NOT CONFORM TO STANDARD SCALES. IN MAKING MEASUREMENTS ON REDUCED PLANS, THE ABOVE SCALES MAY BE USED.

J.U.L.I.E.
JOINT UTILITY LOCATION INFORMATION FOR EXCAVATION
1-800-892-0123
OR 811

DISTRICT ONE -
PROJECT MANAGER: DANIEL WILGREEN (847) 705-4240 (IDOT)
PROJECT ENGINEER: BEHZAD AMINI (312) 857-1006 (DBS)



Michael T. Miller
062-059822
REGISTERED PROFESSIONAL ENGINEER
OF ILLINOIS
LICENSE EXPIRATION DATE 3/31/2015
3/26/14

STATE OF ILLINOIS
DEPARTMENT OF TRANSPORTATION
DIVISION OF HIGHWAYS
SUBMITTED March 31, 2014
John D. Baranzelli, P.E.
DEPUTY DIRECTOR OF HIGHWAYS, REGION ENGINEER
June 27, 2014
John D. Baranzelli, P.E.
ENGINEER OF DESIGN AND ENVIRONMENT
June 27, 2014
Omer Osman, P.E.
DIRECTOR OF HIGHWAYS, CHIEF ENGINEER

CONTRACT NO. 60T09

GROSS LENGTH = 3,970 FEET = 0.75 MILE
NET LENGTH = 3,970 FEET = 0.75 MILE

DBS
DB STERLIN CONSULTANTS, INC.
123 N. WACKER DRIVE SUITE 2000
CHICAGO, ILLINOIS 60606
TEL. (312) 957-1000 FAX. (312) 957-1056

PRINTED BY THE AUTHORITY
OF THE STATE OF ILLINOIS