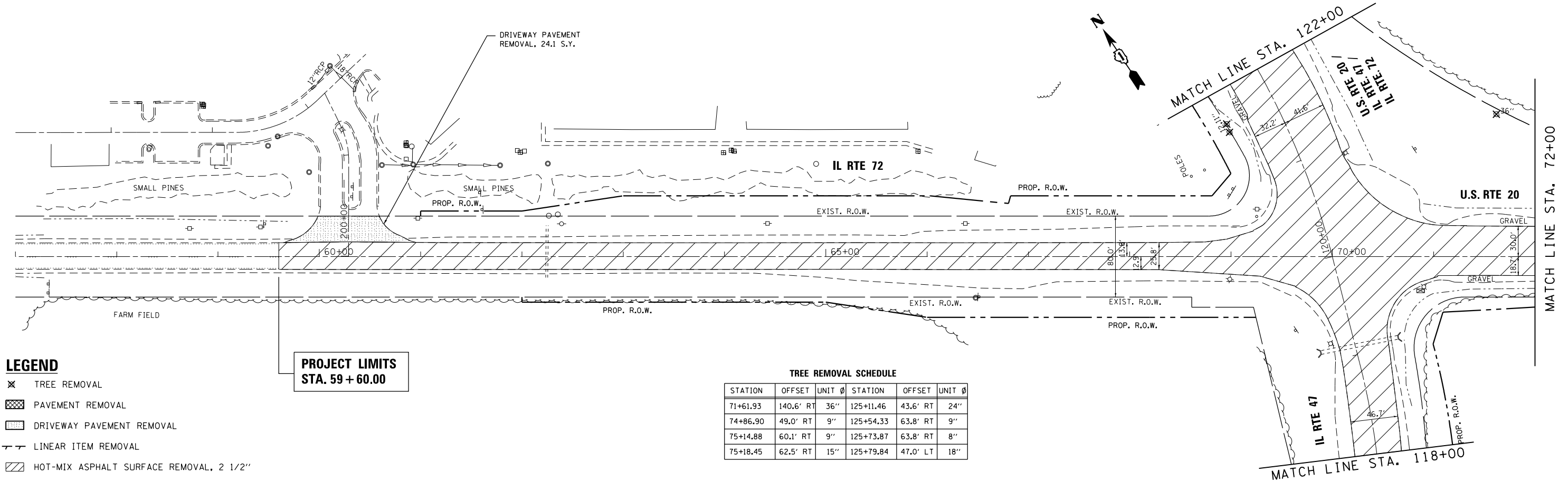


G:\Projects\ILLINOIS Department of Transportation\PTB 162 - Item 7 - Various Various\Work Order No. 11 (South) - US 20 at IL 47 & IL-72\Civil\Cadd Sheets\01697097-sht-removal.dgn

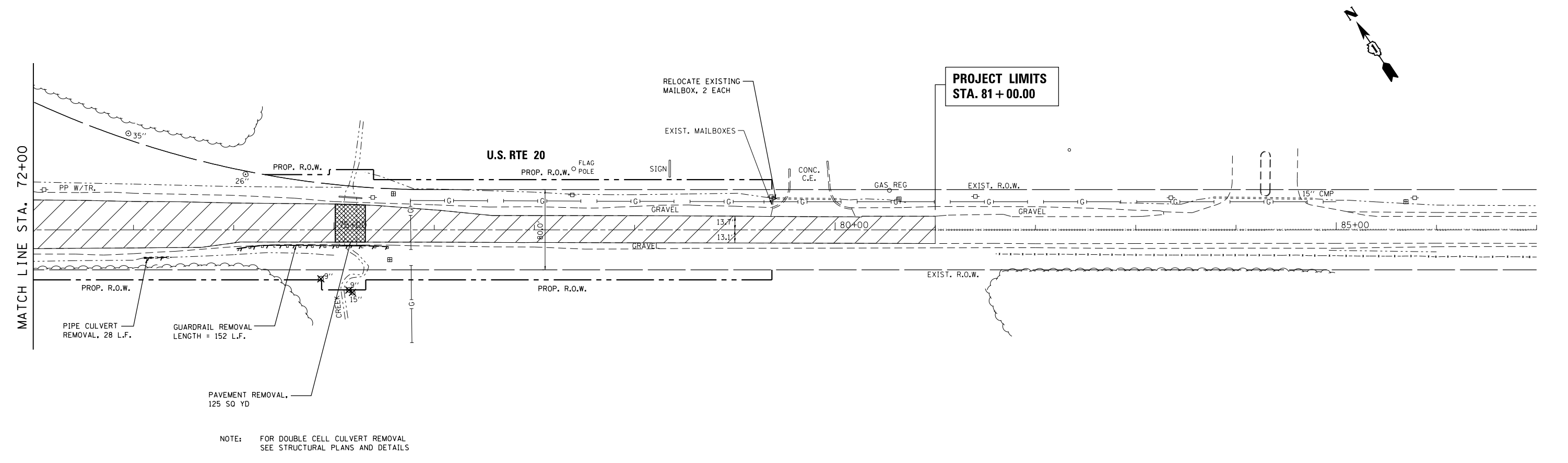


- LEGEND**
- ✕ TREE REMOVAL
  - ▨ PAVEMENT REMOVAL
  - ▤ DRIVEWAY PAVEMENT REMOVAL
  - LINEAR ITEM REMOVAL
  - ▧ HOT-MIX ASPHALT SURFACE REMOVAL, 2 1/2"

**PROJECT LIMITS**  
STA. 59 + 60.00

**TREE REMOVAL SCHEDULE**

STATION	OFFSET	UNIT	Ø	STATION	OFFSET	UNIT	Ø
71+61.93	140.6' RT	36"		125+11.46	43.6' RT	24"	
74+86.90	49.0' RT	9"		125+54.33	63.8' RT	9"	
75+14.88	60.1' RT	9"		125+73.87	63.8' RT	8"	
75+18.45	62.5' RT	15"		125+79.84	47.0' LT	18"	



NOTE: FOR DOUBLE CELL CULVERT REMOVAL SEE STRUCTURAL PLANS AND DETAILS

FILE NAME =	USER NAME = chrishfish	DESIGNED - MTM	REVISED -
Default		DRAWN - MTM	REVISED -
	PLOT SCALE = 100.0000' / 1"	CHECKED - BA	REVISED -
	PLOT DATE = 4/1/2014	DATE - 3/31/14	REVISED -

**STATE OF ILLINOIS  
DEPARTMENT OF TRANSPORTATION**

**EXISTING CONDITIONS AND REMOVAL PLAN  
US RTE 20 (SOUTH JUNCTION)**

SCALE: 1"=50'    SHEET 1 OF 2 SHEETS    STA. 59+60 TO STA. 81+00

F.A.P. RTE.	SECTION	COUNTY	TOTAL SHEETS	SHEET NO.
345	106-S-N-2	KANE	147	26
CONTRACT NO. 60T09				
ILLINOIS FED. AID PROJECT				