

PLAN	SURVEYED	DATE
	PLOTTED	
	ALIGNED	
	CHECKED	
	FILED	
	NO.	

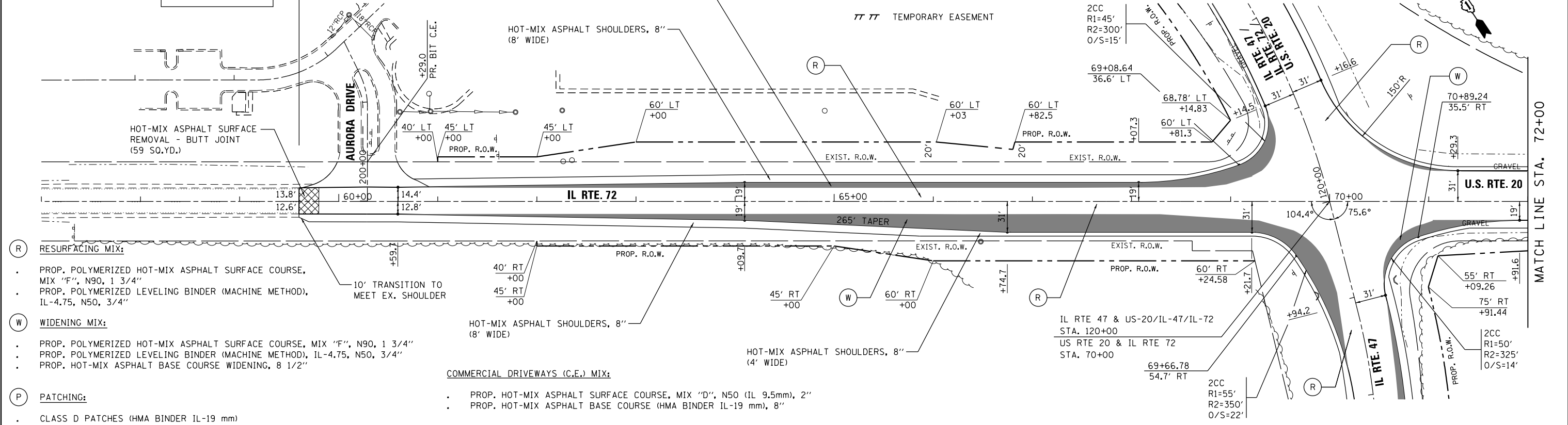
PROFILE	SURVEYED	DATE
	GRADES	
	CHECKED	
	STRUCTURE	
	NOTATION	
	NO.	

G:\Projects\ILLINOIS Department of Transportation\PTB 162 - Item 7 - Various Various Work Order No. 11 South - US 20 at IL 47 & IL 72\Civil\Cadd Sheets\01601099-ah-tp-npr-f.dgn

**PROJECT LIMITS
STA. 59 + 60.00**

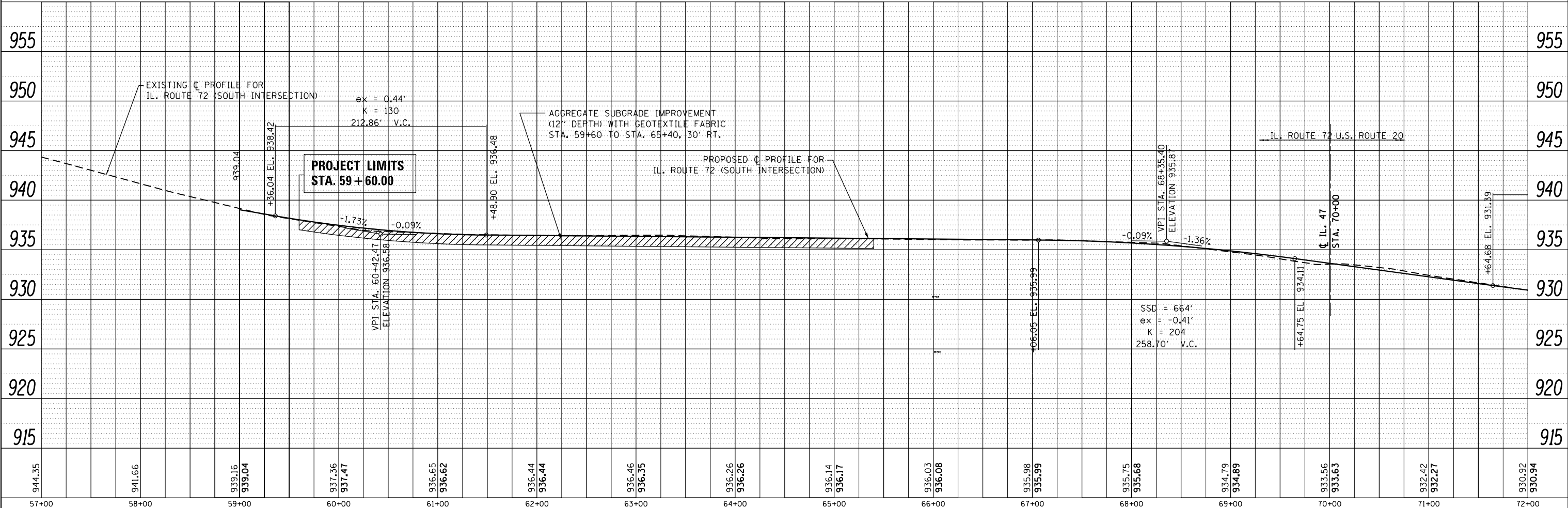
LEGEND

- PAVEMENT WIDENING / FULL DEPTH CONSTRUCTION
- TEMPORARY EASEMENT



- (R) RESURFACING MIX:**
- PROP. POLYMERIZED HOT-MIX ASPHALT SURFACE COURSE, MIX "F", N90, 1 3/4"
 - PROP. POLYMERIZED LEVELING BINDER (MACHINE METHOD), IL-4.75, N50, 3/4"
- (W) WIDENING MIX:**
- PROP. POLYMERIZED HOT-MIX ASPHALT SURFACE COURSE, MIX "F", N90, 1 3/4"
 - PROP. POLYMERIZED LEVELING BINDER (MACHINE METHOD), IL-4.75, N50, 3/4"
 - PROP. HOT-MIX ASPHALT BASE COURSE WIDENING, 8 1/2"
- (P) PATCHING:**
- CLASS D PATCHES (HMA BINDER IL-19 mm)

- COMMERCIAL DRIVEWAYS (C.E.) MIX:**
- PROP. HOT-MIX ASPHALT SURFACE COURSE, MIX "D", N50 (IL 9.5mm), 2"
 - PROP. HOT-MIX ASPHALT BASE COURSE (HMA BINDER IL-19 mm), 8"



FILE NAME =	USER NAME = chrishfish	DESIGNED - MTM	REVISED -	STATE OF ILLINOIS DEPARTMENT OF TRANSPORTATION	ROADWAY PLAN AND PROFILE US RTE 20 (SOUTH JUNCTION)	F.A.P. RTE. 345	SECTION 106-S-N-2	COUNTY KANE	TOTAL SHEETS 147	SHEET NO. 28	
Default	PLOT SCALE = 100.0000' / in.	CHECKED - BA	REVISED -		SCALE: 1"=50'	SHEET 1 OF 4 SHEETS	STA. 59+60 TO STA. 72+00		CONTRACT NO. 60T09		
	PLOT DATE = 4/1/2014	DATE - 3/31/14	REVISED -		ILLINOIS FED. AID PROJECT						