

LEGEND

- PAVEMENT WIDENING / FULL DEPTH CONSTRUCTION
- TEMPORARY EASEMENT

(R) RESURFACING MIX:

- PROP. POLYMERIZED HOT-MIX ASPHALT SURFACE COURSE, MIX "F", N90, 1 3/4"
- PROP. POLYMERIZED LEVELING BINDER (MACHINE METHOD), IL-4.75, N50, 3/4"

(W) WIDENING MIX:

- PROP. POLYMERIZED HOT-MIX ASPHALT SURFACE COURSE, MIX "F", N90, 1 3/4"
- PROP. POLYMERIZED LEVELING BINDER (MACHINE METHOD), IL-4.75, N50, 3/4"
- PROP. HOT-MIX ASPHALT BASE COURSE WIDENING, 8 1/2"

(P) PATCHING:

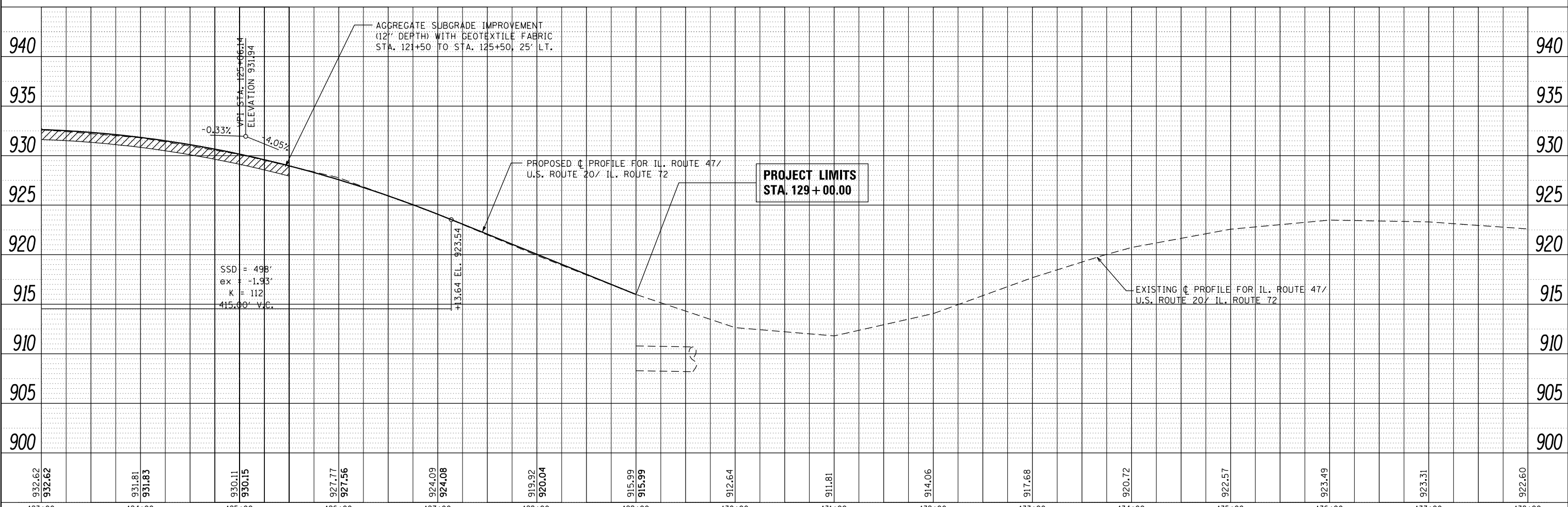
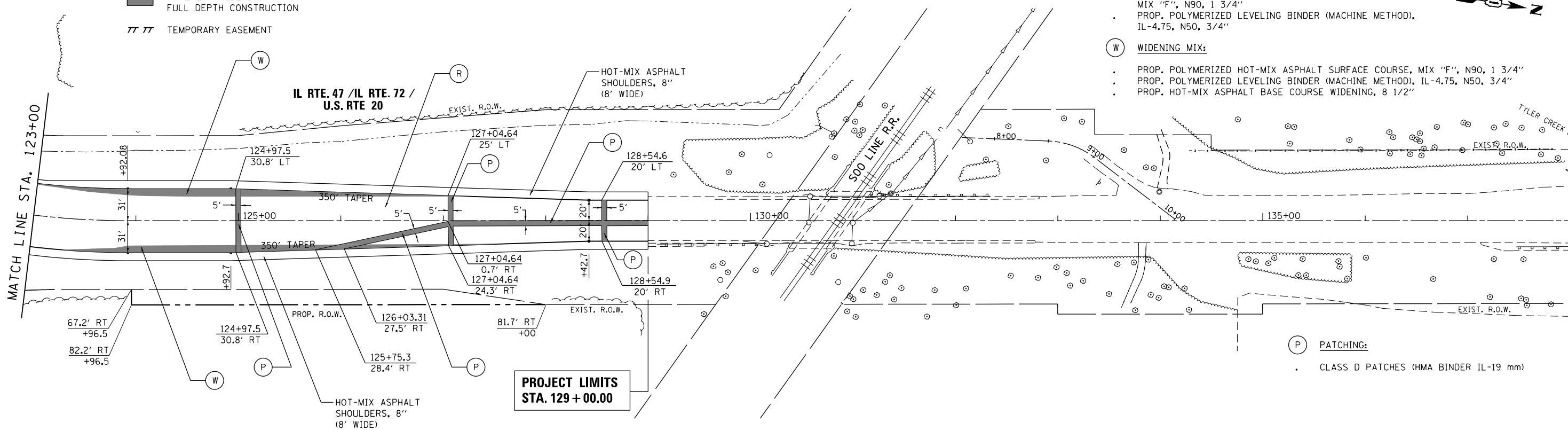
- CLASS D PATCHES (HMA BINDER IL-19 mm)



| | | |
|------|----------|------|
| PLAN | SURVEYED | DATE |
| | PLOTTED | |
| | ALIGNED | |
| | CHECKED | |
| | FILED | |
| | NO. | |

| | | |
|---------|-----------------------------|------|
| PROFILE | SURVEYED | DATE |
| | PLOTTED | |
| | GRADES CHECKED | |
| | STRUCTURE NOTATIONS CHECKED | |
| | NO. | |

G:\Projects\ILLINOIS Department of Transportation\PTB 162 - Item 7 - Various Various Work Order No. 11 South - US 20 et. IL 47 & IL 72\Civil\Cadd Sheets\0160109-ahc-plnpr-f.dgn



| | | | | | | | | | | | | | |
|-------------|------------------------------|----------------|-----------|---|--|---------|------|--------|-------------|----------------|--------|--------------|-----------|
| FILE NAME = | USER NAME = chrishfish | DESIGNED - MTM | REVISED - | STATE OF ILLINOIS DEPARTMENT OF TRANSPORTATION | ROADWAY PLAN AND PROFILE US RTE 20 (SOUTH JUNCTION) | | | | F.A.P. RTE. | SECTION | COUNTY | TOTAL SHEETS | SHEET NO. |
| Default | PLOT SCALE = 100.0000' / in. | CHECKED - BA | REVISED - | | SCALE: 1"=50' | SHEET 4 | OF 4 | SHEETS | STA. 123+00 | TO STA. 129+00 | KANE | 147 | 31 |
| | PLOT DATE = 4/1/2014 | DATE - 3/31/14 | REVISED - | | CONTRACT NO. 60T09 | | | | | | | | |
| | | | | | ILLINOIS FED. AID PROJECT | | | | | | | | |