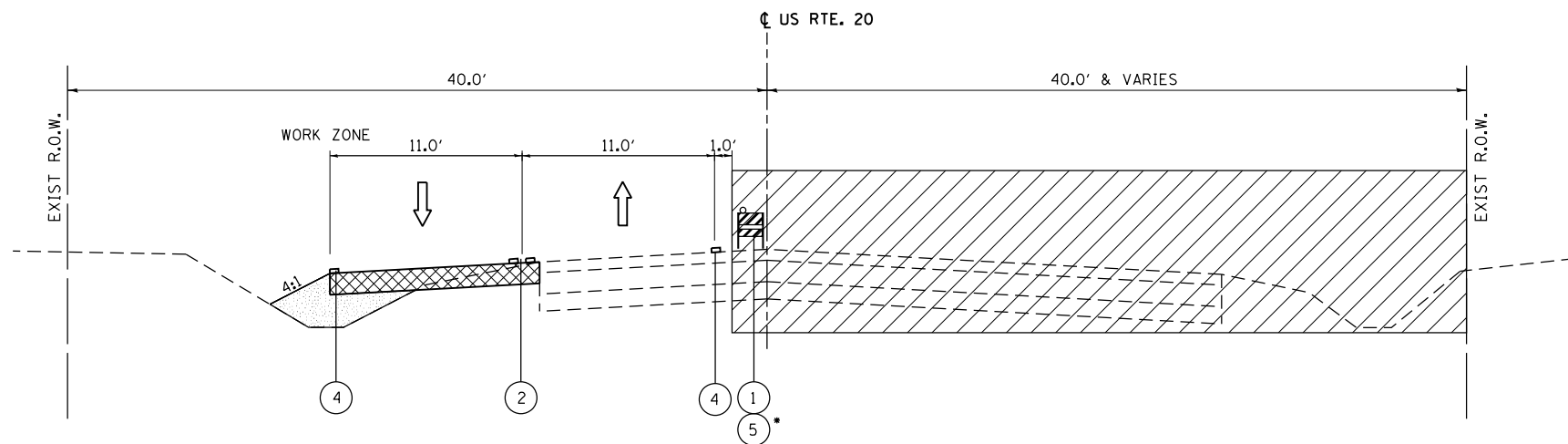


**M.O.T. TYPICAL SECTION – STAGE 2**

**IL ROUTE 72**

STA. 59+60 TO STA. 70+00  
(LOOKING EAST)



**M.O.T. TYPICAL SECTION – STAGE 2**

**U.S. ROUTE 20**

STA. 70+00 TO STA. 81+00  
(LOOKING WEST)

\* TEMPORARY CONCRETE BARRIER LOCATED  
BETWEEN STA. 74+00 TO 76+00

**LEGEND**

- ① TYPE II BARRICADE, DRUM OR VERTICAL BARRICADE
- ② EXISTING 4" DOUBLE SOLID YELLOW (11" C-C)
- ③ TEMPORARY PAVEMENT MARKING - LINE 6" (WHITE)
- ④ TEMPORARY PAVEMENT MARKING - LINE 4" (WHITE)
- ⑤ TEMPORARY CONCRETE BARRIER
- ← DIRECTION OF TRAFFIC
- ▨ WORK ZONE

**NOTES**

1. PRIOR TO INSTALLING POST MOUNTED SIGNS, THE CONTRACTOR SHALL CONTACT J.U.L.I.E.
2. SEE STAGING PLAN AND STANDARD 701422 FOR ADDITIONAL INFORMATION.

FILE NAME =	USER NAME = chr1stf1sh	DESIGNED - MTM	REVISED -	<b>STATE OF ILLINOIS DEPARTMENT OF TRANSPORTATION</b>	<b>SUGGESTED MAINTENANCE OF TRAFFIC STAGE 2 TYPICAL SECTION – SOUTH JUNCTION</b>	F.A.P. RTE.	SECTION	COUNTY	TOTAL SHEETS	SHEET NO.	
Default	PLOT SCALE = 10.0000' / in.	DRAWN - MTM	REVISED -			345	106-S-N-2	KANE	147	34	
	PLOT DATE = 4/1/2014	CHECKED - BA	REVISED -			CONTRACT NO. 60T09					
		DATE - 3/31/14	REVISED -			SCALE: N.T.S.	SHEET 3 OF 7 SHEETS	STA.	TO STA.	ILLINOIS FED. AID PROJECT	