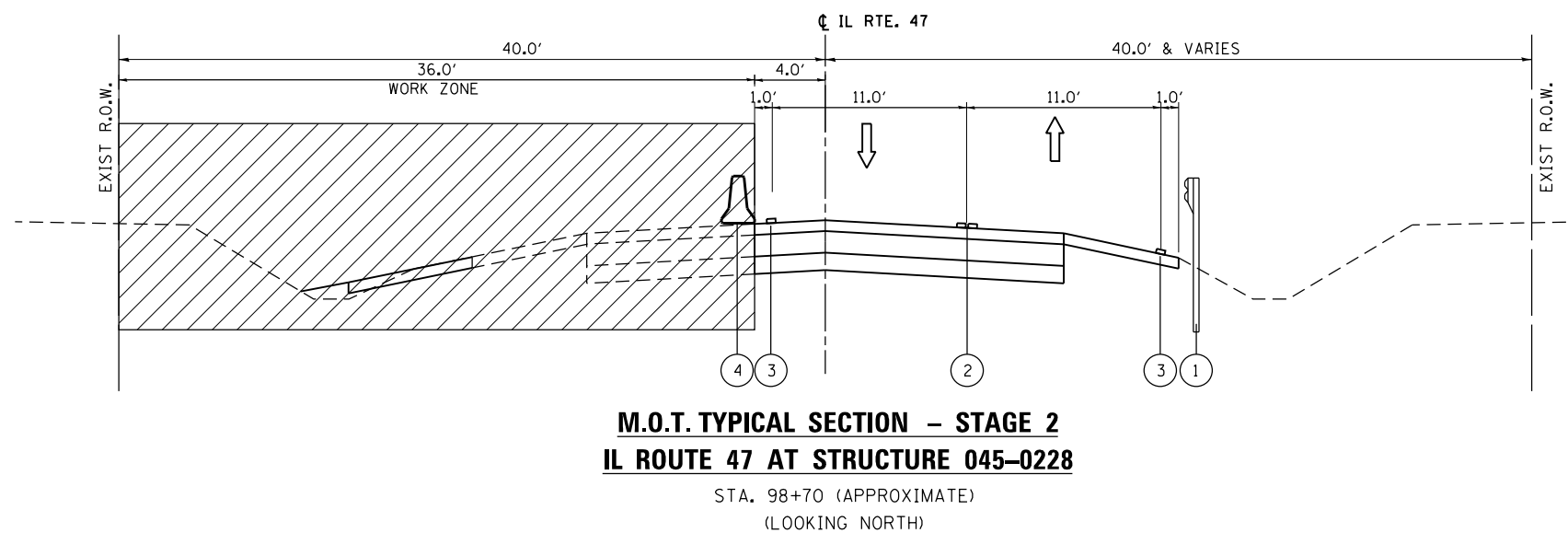
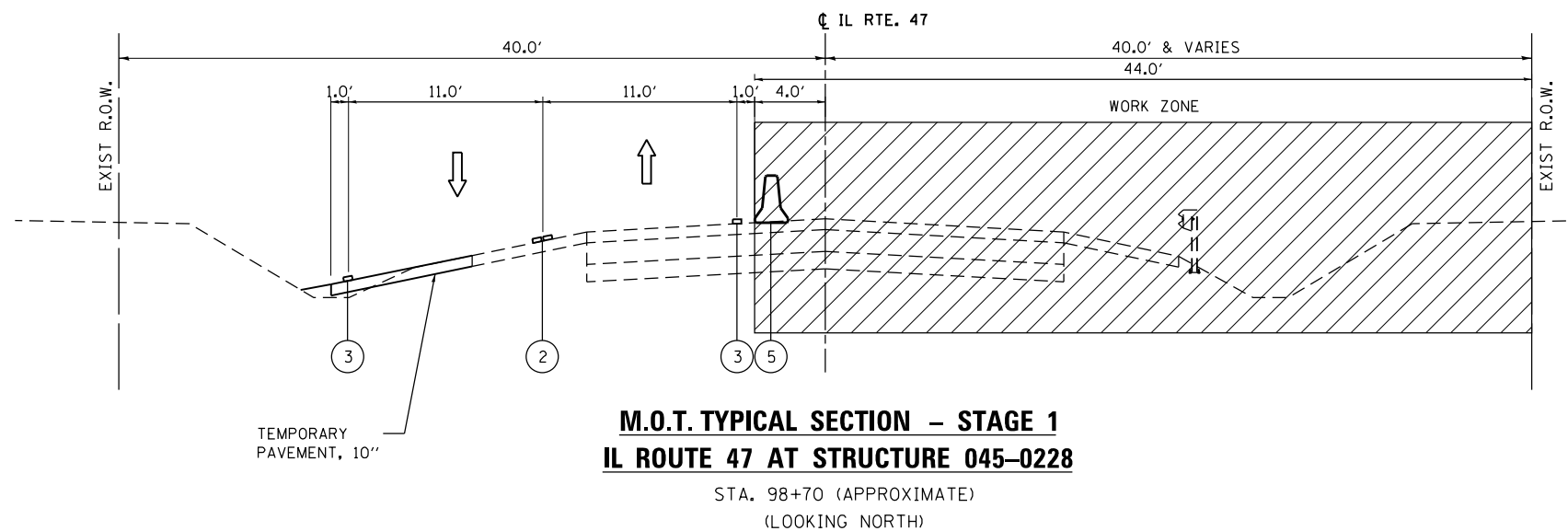
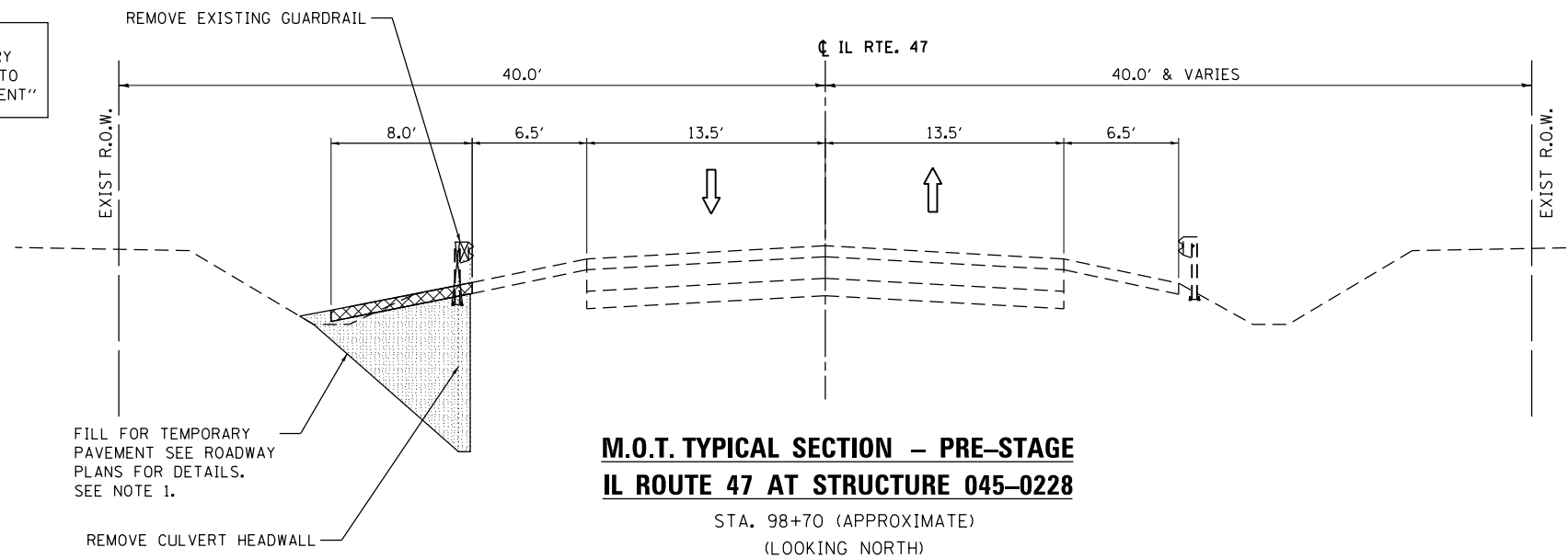


NOTE 1:  
THE COST OF FILL FOR TEMPORARY PAVEMENT SHALL BE INCIDENTAL TO THE COST OF "TEMPORARY PAVEMENT"



**LEGEND**

- ① PROPOSED GUARDRAIL
- ② TEMPORARY 4" DOUBLE SOLID YELLOW (11" C-C)
- ③ TEMPORARY PAVEMENT MARKING - LINE 4" (WHITE)
- ④ TEMPORARY CONCRETE BARRIER
- ← DIRECTION OF TRAFFIC
- ▨ WORK ZONE
- ▩ TEMPORARY PAVEMENT - 10"

**NOTES**

1. PRIOR TO INSTALLING POST MOUNTED SIGNS, THE CONTRACTOR SHALL CONTACT J.U.L.I.E.
2. SEE STAGING PLAN AND STANDARD 701423 FOR ADDITIONAL INFORMATION.

FILE NAME =	USER NAME = chr1sf1sh	DESIGNED - MTM	REVISED -	<b>STATE OF ILLINOIS DEPARTMENT OF TRANSPORTATION</b>	<b>SUGGESTED MAINTENANCE OF TRAFFIC TYPICAL SECTION CULVERT REMOVAL - IL RTE. 47 AT STRUCTURE 045-0228</b>	F.A.P. RTE.	SECTION	COUNTY	TOTAL SHEETS	SHEET NO.	
Default	PLOT SCALE = 10.0000' / in.	DRAWN - MTM	REVISED -			345	106-S-N-2	KANE	147	38	
	PLOT DATE = 4/1/2014	CHECKED - BA	REVISED -			CONTRACT NO. 60T09					
		DATE - 3/31/14	REVISED -			SCALE: N.T.S.	SHEET 7	OF 7 SHEETS	STA.	TO STA.	ILLINOIS FED. AID PROJECT