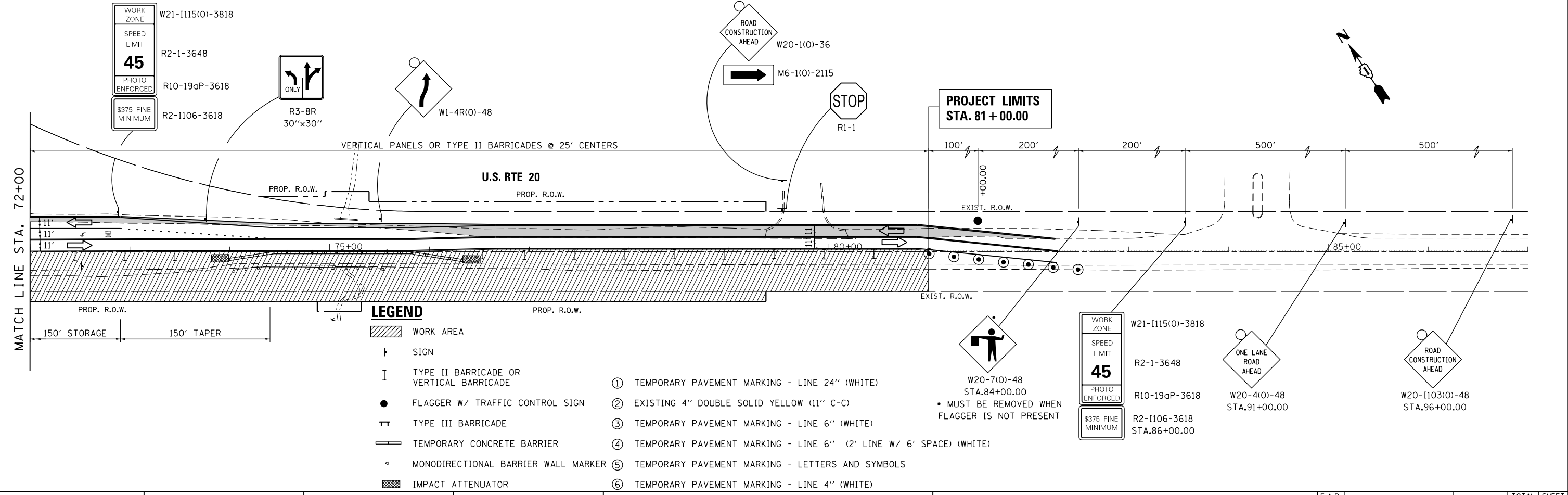


NOTES

1. PRIOR TO INSTALLING POST MOUNTED SIGNS, THE CONTRACTOR SHALL CONTACT J.U.L.I.E.
2. SEE STANDARD 701326 FOR ADDITIONAL INFORMATION.
3. SIGNS INCLUDED IN THE COST TRAFFIC CONTROL.
4. BARRIER WALL MARKERS AT 25'. MARKERS ON THE RIGHT SHALL BE CRYSTAL AND MARKERS ON THE LEFT SHALL BE AMBER. SEE STANDARD 704001 AND 635001.



LEGEND

- WORK AREA
 - SIGN
 - TYPE II BARRICADE OR VERTICAL BARRICADE
 - FLAGGER W/ TRAFFIC CONTROL SIGN
 - TYPE III BARRICADE
 - TEMPORARY CONCRETE BARRIER
 - MONODIRECTIONAL BARRIER WALL MARKER
 - IMPACT ATTENUATOR
- ① TEMPORARY PAVEMENT MARKING - LINE 24" (WHITE)
 - ② EXISTING 4" DOUBLE SOLID YELLOW (11" C-C)
 - ③ TEMPORARY PAVEMENT MARKING - LINE 6" (WHITE)
 - ④ TEMPORARY PAVEMENT MARKING - LINE 6" (2' LINE W/ 6' SPACE) (WHITE)
 - ⑤ TEMPORARY PAVEMENT MARKING - LETTERS AND SYMBOLS
 - ⑥ TEMPORARY PAVEMENT MARKING - LINE 4" (WHITE)

G:\Projects\ILLINOIS Department of Transportation\PTB 162 - Item 7 - Various Various\Work Order No. 11 IL-72\Civil\Cadd Sheets\162T09smt-staging.dgn

FILE NAME =	USER NAME = chr15fish	DESIGNED - MTM	REVISED -	STATE OF ILLINOIS DEPARTMENT OF TRANSPORTATION	SUGGESTED MAINTENANCE OF TRAFFIC - STAGE 2 US RTE 20 (SOUTH JUNCTION)				F.A.P. RTE. 345	SECTION 106-S-N-2	COUNTY KANE	TOTAL SHEETS 147	SHEET NO. 39
Default	PLOT SCALE = 100.0000' / in.	CHECKED - BA	REVISED -		SCALE: 1"=50'	SHEET 1	OF 2 SHEETS	STA. 59+60	TO STA. 81+00	CONTRACT NO. 60T09			
	PLOT DATE = 4/1/2014	DATE - 3/31/14	REVISED -		ILLINOIS FED. AID PROJECT								