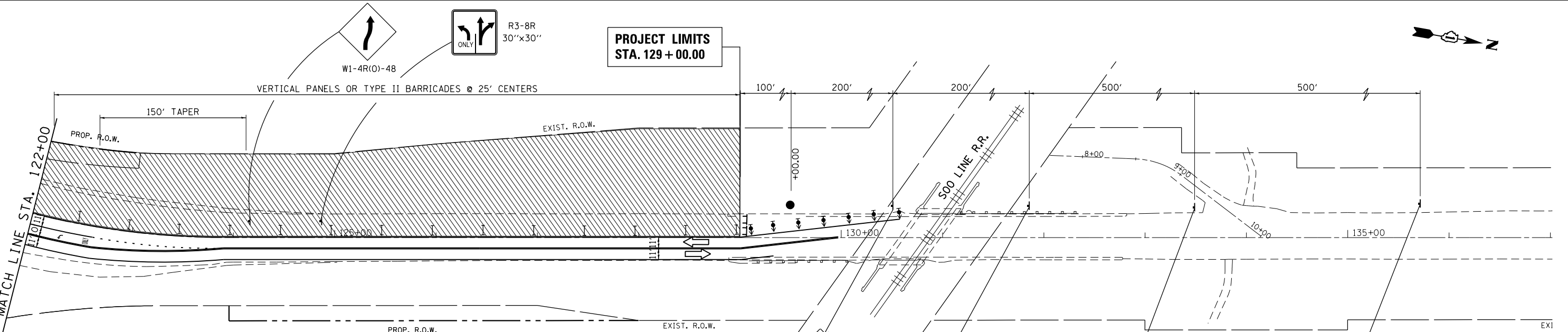
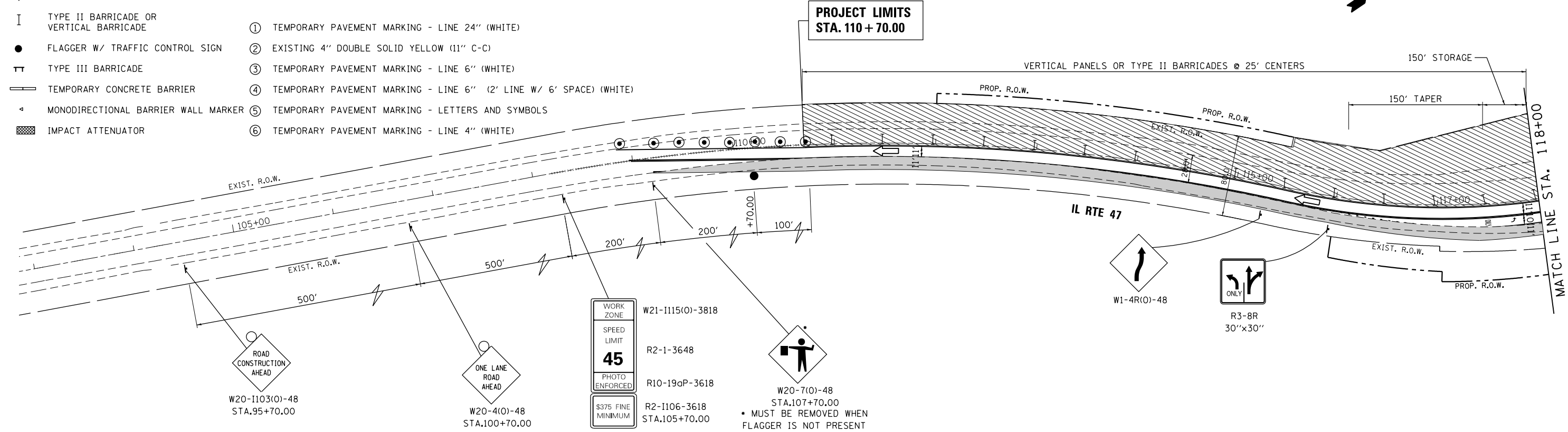


LEGEND

- WORK AREA
- SIGN
- TYPE II BARRICADE OR VERTICAL BARRICADE
- FLAGGER W/ TRAFFIC CONTROL SIGN
- TYPE III BARRICADE
- TEMPORARY CONCRETE BARRIER
- MONODIRECTIONAL BARRIER WALL MARKER
- IMPACT ATTENUATOR
- ① TEMPORARY PAVEMENT MARKING - LINE 24" (WHITE)
- ② EXISTING 4" DOUBLE SOLID YELLOW (11" C-C)
- ③ TEMPORARY PAVEMENT MARKING - LINE 6" (WHITE)
- ④ TEMPORARY PAVEMENT MARKING - LINE 6" (2' LINE W/ 6' SPACE) (WHITE)
- ⑤ TEMPORARY PAVEMENT MARKING - LETTERS AND SYMBOLS
- ⑥ TEMPORARY PAVEMENT MARKING - LINE 4" (WHITE)



NOTES

1. PRIOR TO INSTALLING POST MOUNTED SIGNS, THE CONTRACTOR SHALL CONTACT J.U.L.I.E.
2. SEE STANDARD 701326 FOR ADDITIONAL INFORMATION.
3. SIGNS INCLUDED IN THE COST TRAFFIC CONTROL.
4. BARRIER WALL MARKERS AT 25'. MARKERS ON THE RIGHT SHALL BE CRYSTAL AND MARKERS ON THE LEFT SHALL BE AMBER. SEE STANDARD 704001 AND 635001.

FILE NAME =	USER NAME = chr1sf1sh	DESIGNED - MTM	REVISED -
		DRAWN - MTM	REVISED -
	PLOT SCALE = 100.0000' / 1" =	CHECKED - BA	REVISED -
	PLOT DATE = 4/1/2014	DATE - 3/31/14	REVISED -

STATE OF ILLINOIS
DEPARTMENT OF TRANSPORTATION

SUGGESTED MAINTENANCE OF TRAFFIC - STAGE 2
US RTE 20 (SOUTH JUNCTION)

SCALE: 1"=50' SHEET 2 OF 2 SHEETS STA. 110+70 TO STA. 129+00

F.A.P. RTE.	SECTION	COUNTY	TOTAL SHEETS	SHEET NO.
345	106-S-N-2	KANE	147	40
CONTRACT NO. 60T09				
ILLINOIS FED. AID PROJECT				

G:\Projects\ILLINOIS Department of Transportation\PTB 162 - Item 7 - Various Various Work Order No. 11 (South) - US 20 at IL 47 & IL-72\Civil\Cadd Sheets\162T09\stg-dgn