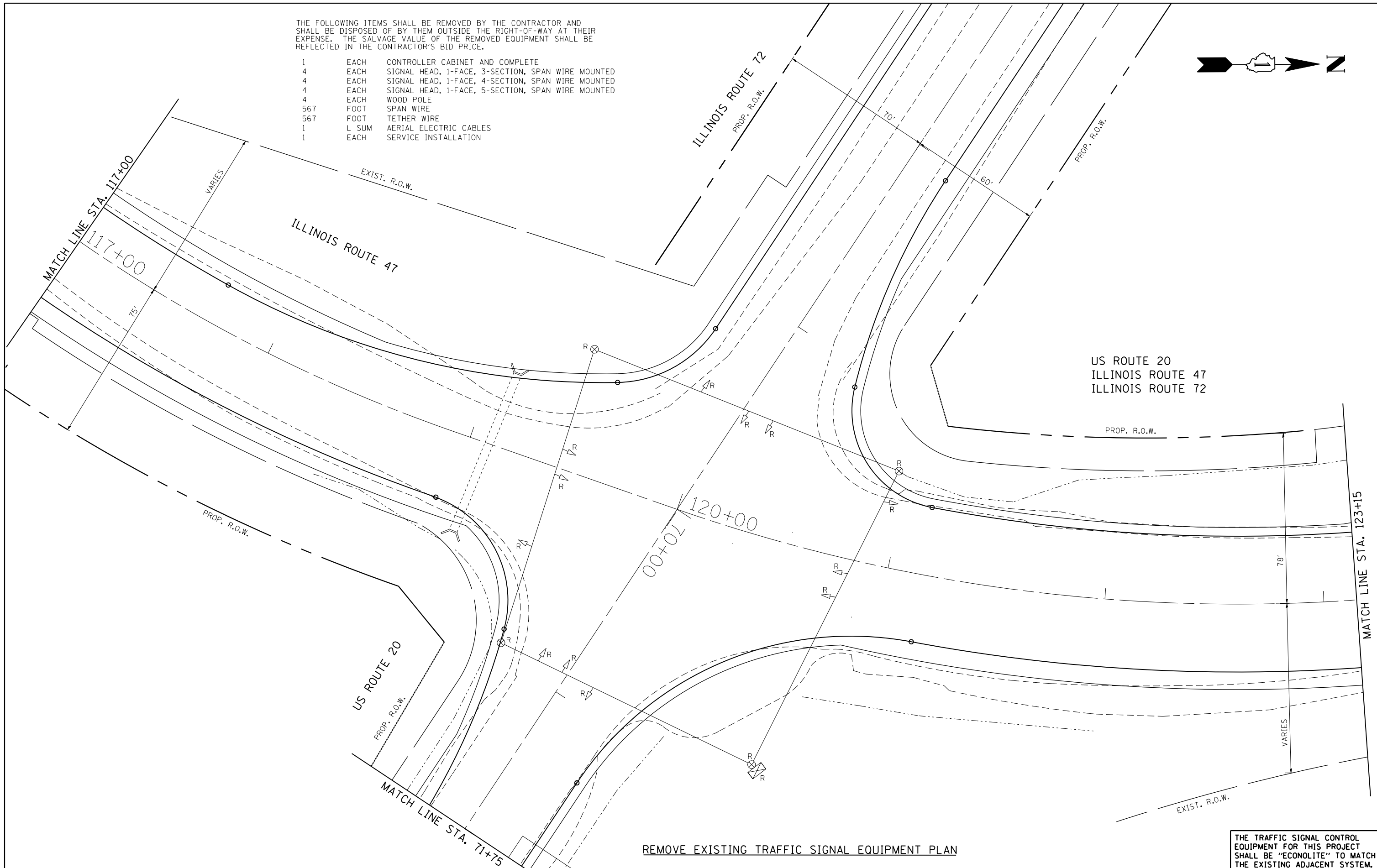


THE FOLLOWING ITEMS SHALL BE REMOVED BY THE CONTRACTOR AND SHALL BE DISPOSED OF BY THEM OUTSIDE THE RIGHT-OF-WAY AT THEIR EXPENSE. THE SALVAGE VALUE OF THE REMOVED EQUIPMENT SHALL BE REFLECTED IN THE CONTRACTOR'S BID PRICE.

- 1 EACH CONTROLLER CABINET AND COMPLETE
- 4 EACH SIGNAL HEAD, 1-FACE, 3-SECTION, SPAN WIRE MOUNTED
- 4 EACH SIGNAL HEAD, 1-FACE, 4-SECTION, SPAN WIRE MOUNTED
- 4 EACH SIGNAL HEAD, 1-FACE, 5-SECTION, SPAN WIRE MOUNTED
- 4 EACH WOOD POLE
- 567 FOOT SPAN WIRE
- 567 FOOT TETHER WIRE
- 1 L SUM AERIAL ELECTRIC CABLES
- 1 EACH SERVICE INSTALLATION



REMOVE EXISTING TRAFFIC SIGNAL EQUIPMENT PLAN

THE TRAFFIC SIGNAL CONTROL EQUIPMENT FOR THIS PROJECT SHALL BE "ECONOLITE" TO MATCH THE EXISTING ADJACENT SYSTEM.

FILE NAME =	USER NAME = Esse	DESIGNED - PKG	REVISED - 4/21/2014, EA
k:\projects\projects 2013\us 20 at il 47	il 72\signals\60\09 (south)\13.US 20 at IL	DRAWN 72 (South Junction).Removal.Int.dwg	REVISED -
	PLOT SCALE = 40.0000' / IN.	CHECKED - PKG	REVISED -
	PLOT DATE = 4/21/2014	DATE - 3/15/2013	REVISED -

**STATE OF ILLINOIS
DEPARTMENT OF TRANSPORTATION**

REMOVE EXISTING TRAFFIC SIGNAL EQUIPMENT PLAN			
ILLINOIS ROUTE 47 AT US ROUTE 20 / ILLINOIS ROUTE 72			
(SOUTH JUNCTION) (SHEET 1 OF 2)			
SCALE: 1"=20'	SHEET NO.	OF SHEETS	STA. TO STA.

F.A.P. RTE.	SECTION	COUNTY	TOTAL SHEETS	SHEET NO.
345	106-S-N-2	KANE	147	74
CONTRACT NO. 60T09				
FED. ROAD DIST. NO. - ILLINOIS FED. AID PROJECT				