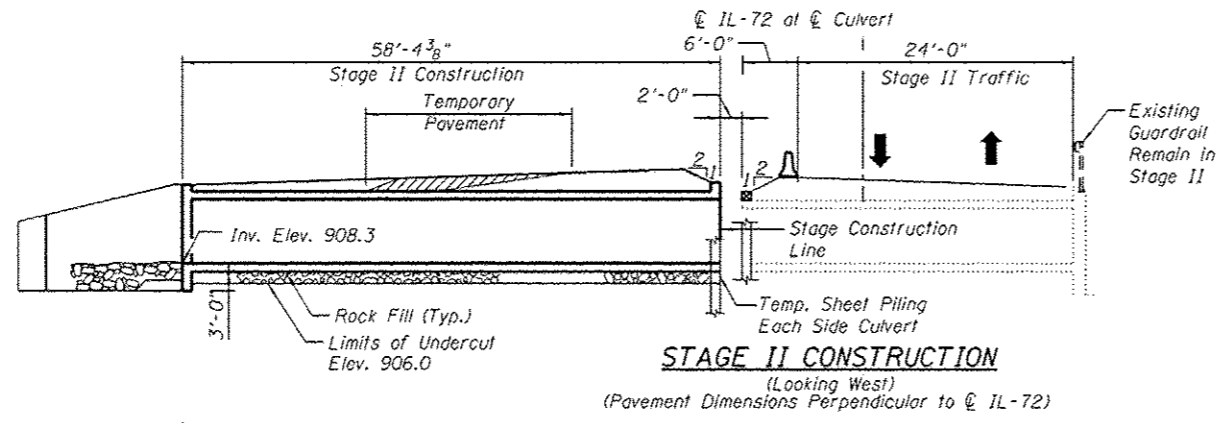


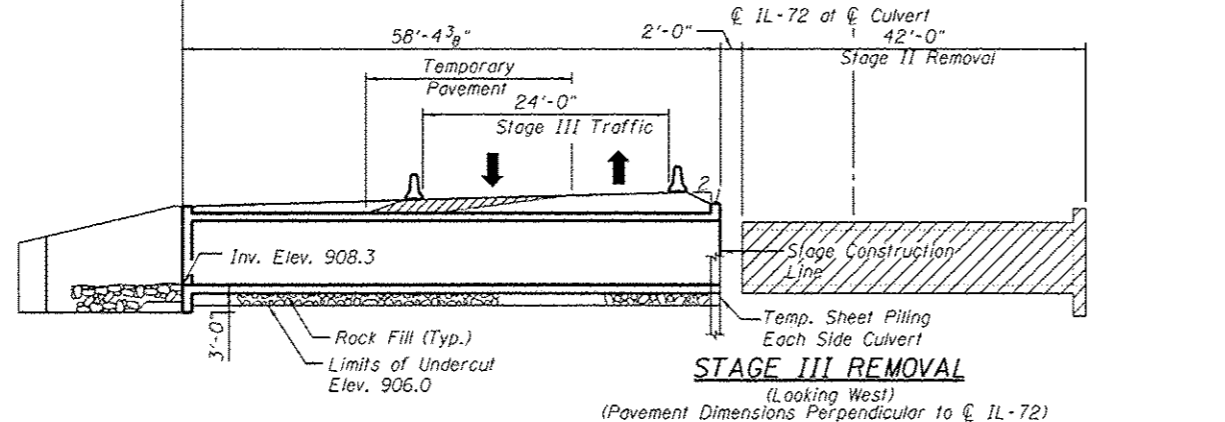
STAGE II REMOVAL

(Looking West)
(Pavement Dimensions Perpendicular to CL IL-72)



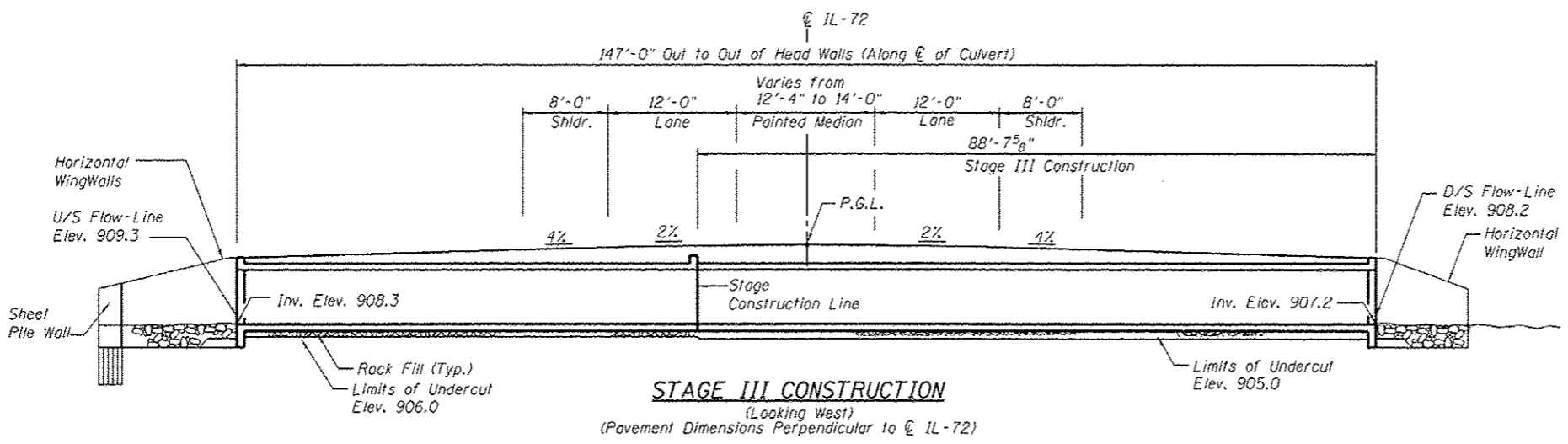
STAGE II CONSTRUCTION

(Looking West)
(Pavement Dimensions Perpendicular to CL IL-72)



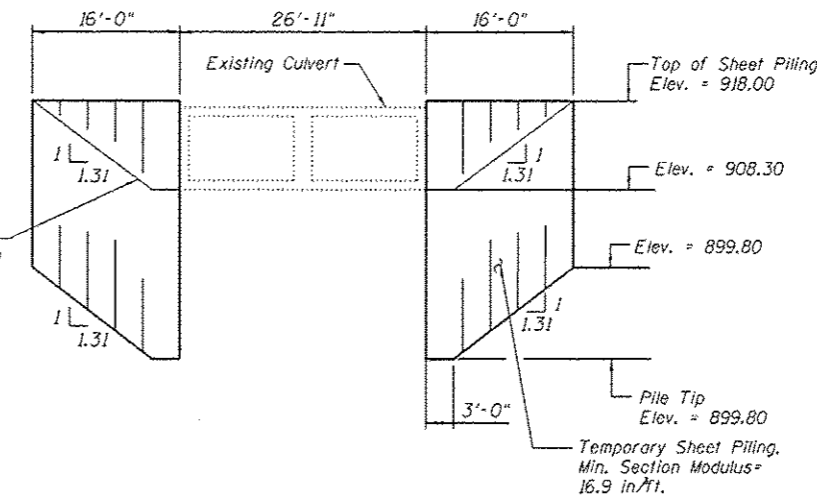
STAGE III REMOVAL

(Looking West)
(Pavement Dimensions Perpendicular to CL IL-72)



STAGE III CONSTRUCTION

(Looking West)
(Pavement Dimensions Perpendicular to CL IL-72)



ELEVATION - TEMPORARY SHEET PILING AT STAGE LINE

GENERAL NOTES

1. Reinforcement bars designated (E) shall be epoxy coated.
2. The limits and quantities of removal of the existing soil and replacement with the rockfill materials shown are based on the boring data and may be modified by the District Geotechnical and Field Engineers for variable subsurface conditions encountered in the field.
3. Layout of the slope protection system may be varied to suit ground conditions in the field as directed by the Engineer.
4. If the Contractor chooses to alter the temporary cantilevered sheet piling design requirements shown on the plan, a design submittal including plan details and calculations will be required for review and acceptance by the Engineer.
5. Hatched areas indicate "Removal of Existing Structures."
6. See Roadway Plans for quantity of Temporary Concrete Barrier.

TOTAL BILL OF MATERIAL

| ITEM | UNIT | TOTAL |
|----------------------------------|---------|---------|
| Stone Riprap, Class A4 | Sq. Yd. | 119 |
| Filler Fabric | Sq. Yd. | 125 |
| Removal of Existing Structures | Each | 1 |
| Structure Excavation | Cu. Yd. | 357 |
| Concrete Structures | Cu. Yd. | 2.8 |
| Reinforcement Bars, Epoxy Coated | Pound | 117,690 |
| Bar Splicers | Each | 138 |
| Name Plates | Each | 1 |
| Concrete Box Culverts | Cu. Yd. | 409.8 |
| Permanent Steel Sheet Piling | Sq. Ft. | 185 |
| Temporary Sheet Piling | Sq. Ft. | 1,224 |
| Rock Fill-Foundation | Ton | 445 |

INDEX OF SHEETS

- S1 General Plan and Elevation
- S2 Stage Construction
- S3 Temporary Concrete Barrier for Stage Construction
- S4 Culvert Plan, Top Slab, Bottom Slab and Sections
- S5 Culvert Plan, Top Slab, Bottom Slab, Elevations and Details
- S6 Culvert Sections and Details
- S7 Bar Splicer Assembly and Mechanical Splicer Details
- S8 Soil Boring Logs I
- S9 Soil Boring Logs II

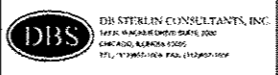
ABBREVIATIONS

- F.F. = Front Face
- B.F. = Back Face
- E.F. = Each Face

ADDENDUM 1 7-12-14

PLOT DATE = \$DATES\$
FILE NAME = \$FILEL\$

| | | |
|--------------|----------------|----------------------|
| USER NAME = | DESIGNED - MBC | REVISED - 6/12/14 BA |
| PLOT SCALE = | DRAWN - SSR | REVISED - |
| PLOT DATE = | CHECKED - WPK | REVISED - |
| FILE NAME = | DATE - 7/7/14 | REVISED - |



STATE OF ILLINOIS
DEPARTMENT OF TRANSPORTATION

STAGE CONSTRUCTION
STRUCTURE NO. 045-2041

SHEET NO. S2 OF S9 SHEETS

| | | | | |
|--------------------|-----------|--------|---|-----------|
| F.A.P. RTE. | SECTION | COUNTY | TOTAL SHEETS | SHEET NO. |
| 345 | 106-S-N-1 | KANE | 167 | 96 |
| CONTRACT NO. 60T10 | | | FED. ROAD DIST. NO. 1 ILLINOIS FED. AID PROJECT | |