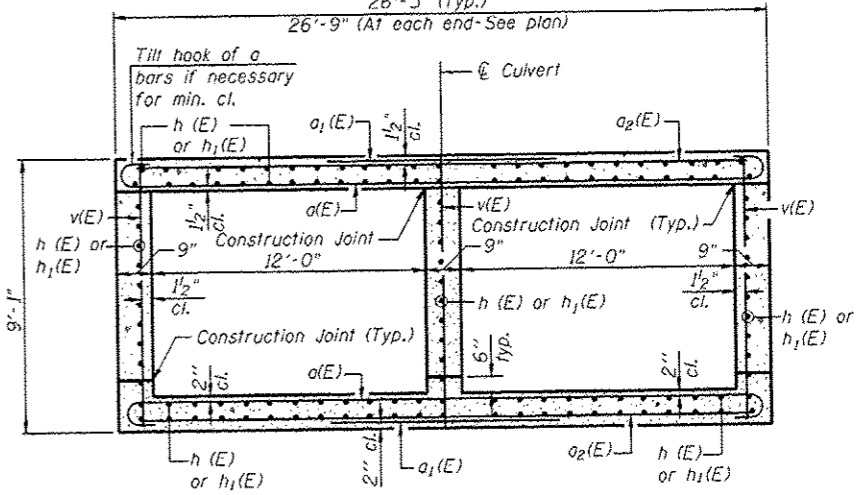


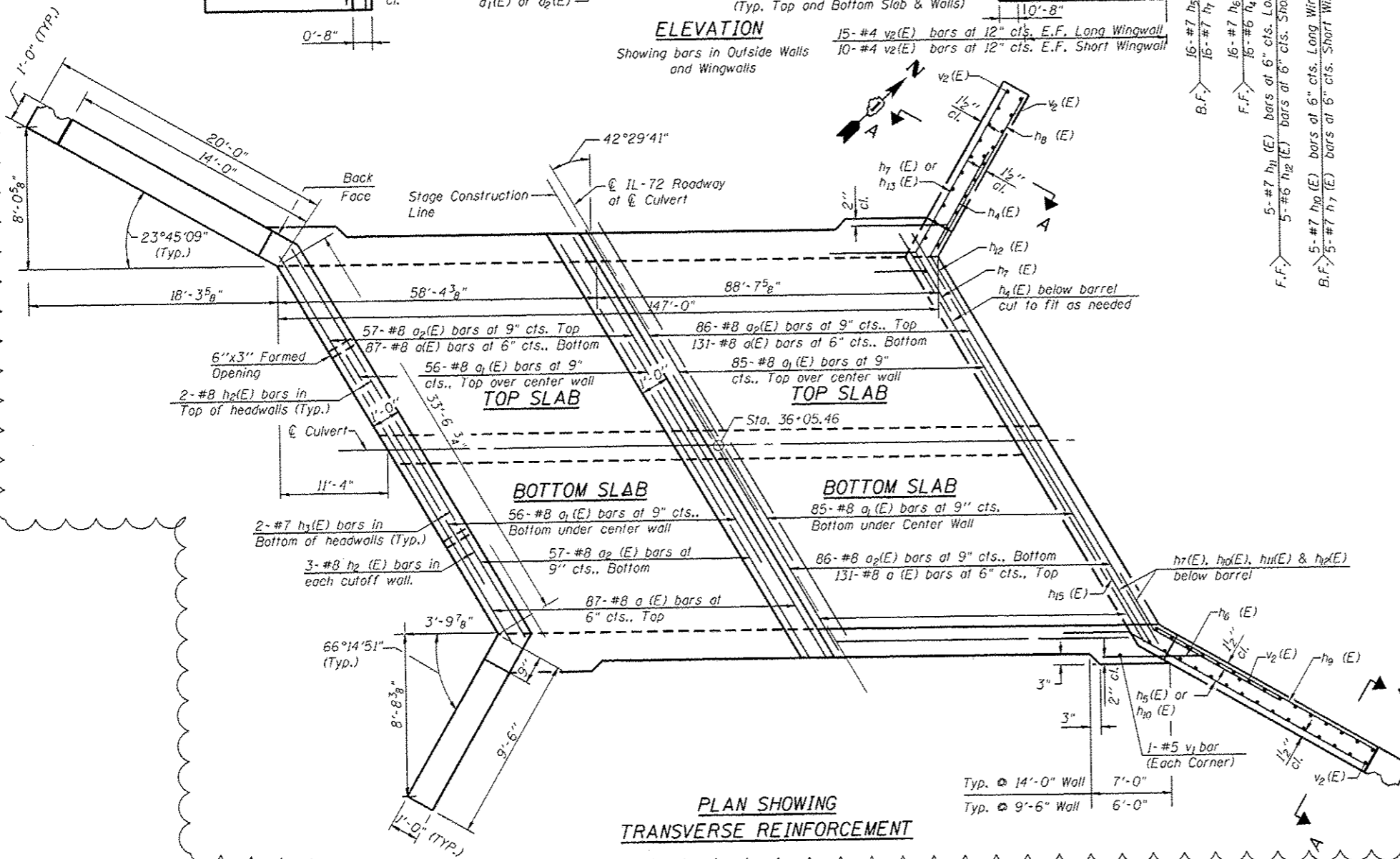
ELEVATION

Showing bars in Outside Walls and Wingwalls



SECTION THRU BARREL

- Notes:
1. A distance of half the length of the wingwall but not less than six feet of the barrel shall be poured monolithically with the wingwalls.
 2. Bars indicated thus 12x4-#5 etc. indicates 12 lines of bars with 4 lengths per line.
 3. Bars shown on south side of plan are Stage II reinforcement. Bars shown on north side of plan are Stage III reinforcement.
 4. All reinforcement bar spacings in the top and bottom slabs are perpendicular to bar placement.
 5. See Sheet S6 for Section A-A.



PLAN SHOWING TRANSVERSE REINFORCEMENT

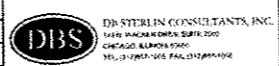
ABBREVIATIONS

F.F. = Front Face
 B.F. = Back Face
 E.F. = Each Face

ADDENDUM 1 7-18-14

PLOT DATE = 8/04/15
 FILE NAME = SFILEL5

DESIGNED - MBC	REVISOR - 6/12/14 BA
DRAWN - SSR	REVISOR -
CHECKED - WPK	REVISOR -
DATE - 7/7/14	REVISOR -



STATE OF ILLINOIS
 DEPARTMENT OF TRANSPORTATION

CULVERT PLAN TOP SLAB, BOTTOM SLAB AND SECTIONS
 STRUCTURE NO. 045-2041

SHEET NO. S4 OF S9 SHEETS

F.A.P. RTE. 345	SECTION 106-S-N-1	COUNTY KANE	TOTAL SHEETS 167	SHEET NO. 99
CONTRACT NO. 60T10				
FED. ROAD DIST. NO. 1 ILLINOIS FED. AID PROJECT				