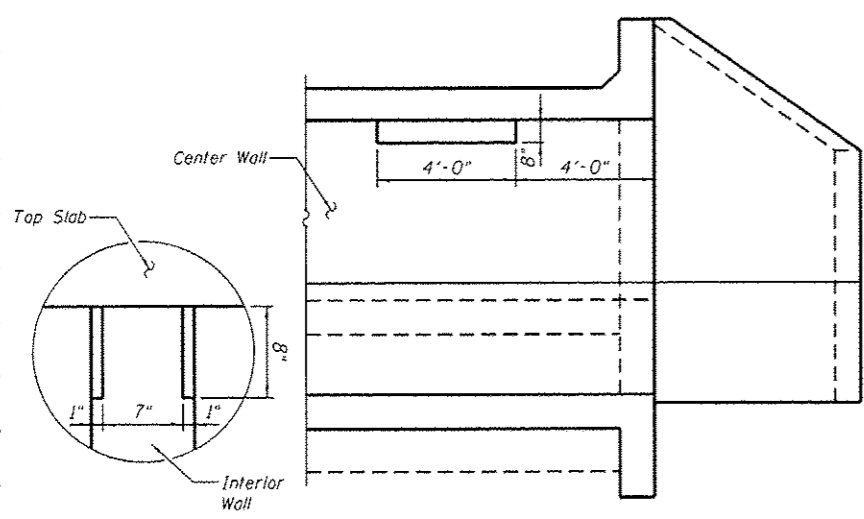
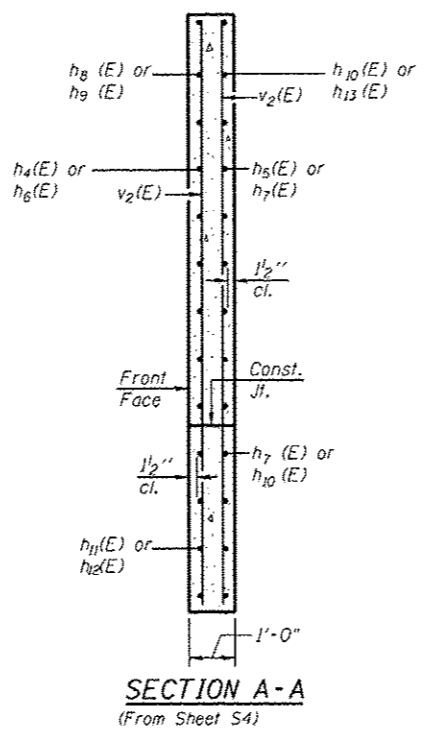


BILL OF MATERIAL

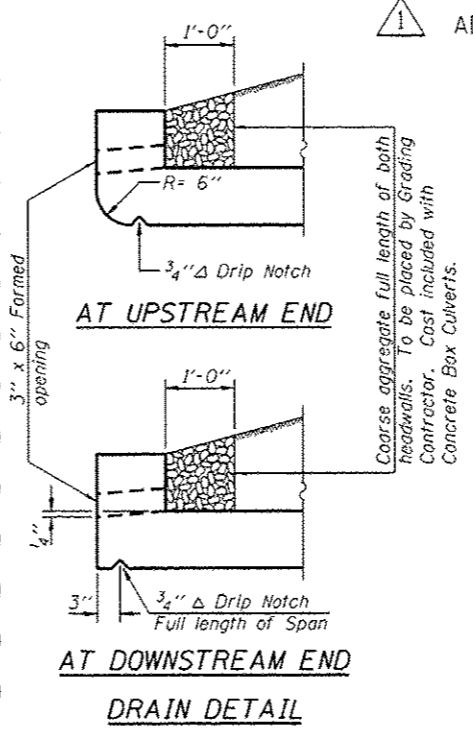
Bar	No.	Size	Length	Shape
a (E)	436	#8	37'-1"	U
a ₁ (E)	282	#8	16'-3"	U
a ₂ (E)	286	#8	35'-3"	U
d (E)	62	#4	4'-6"	L
d ₁ (E)	30	#5	2'-5"	L
d ₂ (E)	8	#5	1'-6"	L
d ₃ (E)	15	#4	2'-3"	L
h (E)	276	#5	30'-8"	U
h ₁ (E)	414	#5	30'-6"	U
h ₂ (E)	10	#8	34'-2"	U
h ₃ (E)	8	#8	35'-3"	U
h ₄ (E)	32	#6	8'-0"	U
h ₅ (E)	32	#7	17'-6"	U
h ₆ (E)	32	#7	8'-0"	U
h ₇ (E)	42	#7	13'-0"	U
h ₈ (E)	24	#4	9'-3"	U
h ₉ (E)	24	#4	13'-9"	U
h ₁₀ (E)	16	#7	17'-6"	U
h ₁₁ (E)	10	#7	17'-0"	U
h ₁₂ (E)	10	#6	12'-6"	U
h ₁₃ (E)	6	#6	13'-0"	U
h ₁₄ (E)	20	#4	5'-8"	U
h ₁₅ (E)	4	#4	16'-0"	U
v (E)	588	#5	8'-8"	U
v ₁ (E)	4	#5	8'-9"	U
v ₂ (E)	100	#4	11'-6"	U
v ₃ (E)	14	#4	8'-7"	U
s (E)	35	#4	5'-3"	L
s ₁ (E)	35	#4	7'-9"	L
s ₂ (E)	35	#4	5'-3"	L
Concrete Box Culverts		Cu. Yd.	409.8	
Reinforcement Bars, Epoxy Coated		Pound	117,690	
Bars Splicers		Each	138	
Concrete Structures		Cu. Yd.	2.8	
Permanent Steel Sheet Piling		Sq. Ft.	185	



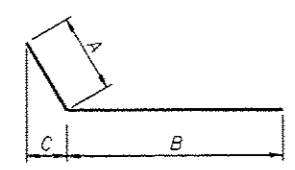
NOTCH DETAIL
LONGITUDINAL SECTION
PHOEBE NESTING SITE
(Near downstream end)



SECTION A-A
(From Sheet S4)

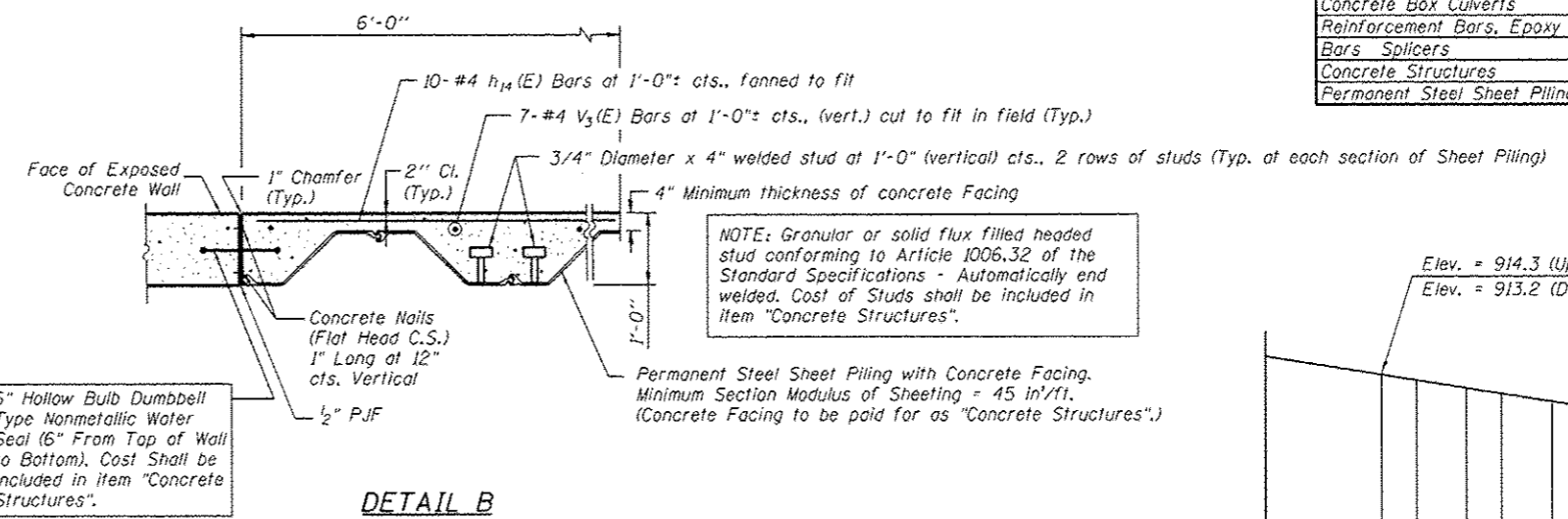


DRAIN DETAIL

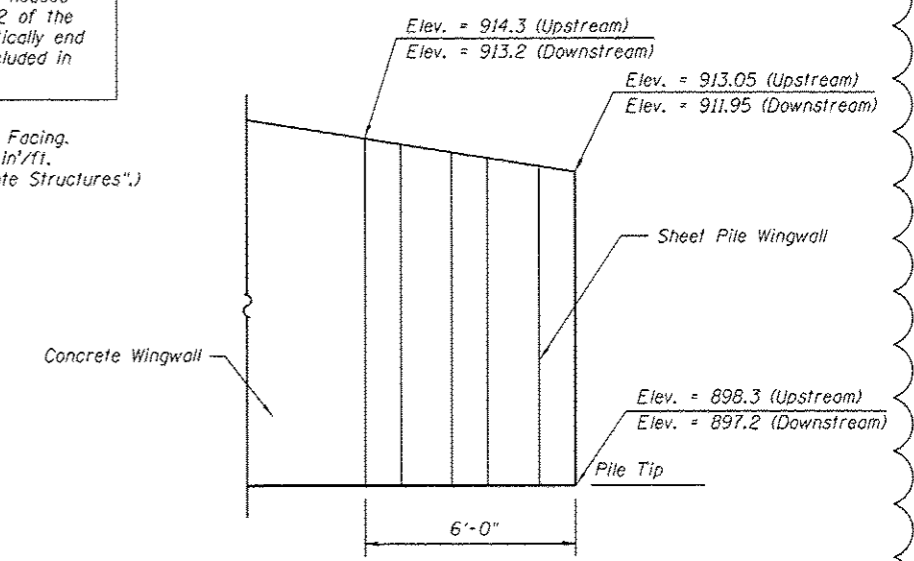


BARS h8(E) Thru h11(E), and h15(E) Thru h20(E)

Bar	A	B	C
h4(E)	3'-0"	5'-0"	1'-2 1/2"
h5(E)	3'-0"	14'-6"	2'-9"
h6(E)	3'-0"	5'-0"	2'-9"
h7(E)	3'-0"	10'-0"	1'-2 1/2"
h10(E)	3'-0"	14'-6"	2'-9"
h11(E)	3'-0"	14'-0"	2'-9"
h12(E)	3'-0"	10'-0"	1'-2 1/2"
h13(E)	3'-0"	9'-6"	1'-2 1/2"

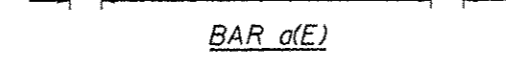
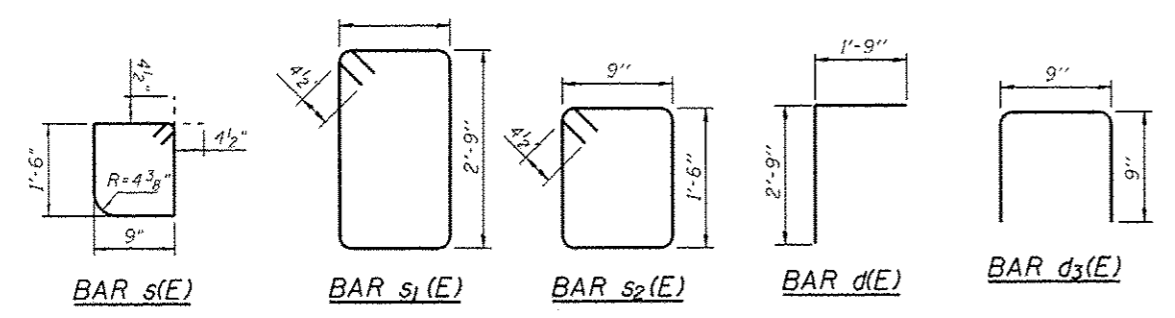


DETAIL B



ELEVATION - PERMANENT SHEET PILING

NOTE: Contractor shall drive Sheet Pile Wall first, and then pour Concrete for Concrete Wingwall and Concrete Facing.



BAR d(E)

PLOT DATE = 5/24/15
FILE NAME = 5FILES

USER NAME =	DESIGNED - MBC	REVISED - 6/12/14 BA
PLOT SCALE =	DRAWN - SSR	REVISED -
PLOT DATE =	CHECKED - WPK	REVISED -
FILE NAME =	DATE - 7/7/14	REVISED -



STATE OF ILLINOIS
DEPARTMENT OF TRANSPORTATION

CULVERT SECTIONS AND DETAILS
STRUCTURE NO. 045-2041

F.A.P. RTE. =	SECTION	COUNTY	TOTAL SHEETS	SHEET NO.
345	106-S-N-1	KANE	167	100
FED. ROAD DIST. NO. 1			ILLINOIS FED. AID PROJECT	

SHEET NO. 56 OF 59 SHEETS

CONTRACT NO. 60T10