

F.A.P. RTE.	SECTION	COUNTY	TOTAL SHEETS	SHEET NO.
345	106-S-N-1	KANE	167	1
ILLINOIS			CONTRACT NO. 60T10	

STATE OF ILLINOIS
DEPARTMENT OF TRANSPORTATION
DIVISION OF HIGHWAYS

PROPOSED HIGHWAY PLANS

FAP ROUTE 345 (US ROUTE 20)
SECTION: 106-S-N-1

AT IL ROUTE 47 /IL ROUTE 72 (NORTH JUNCTION)
LEFT TURN LANES, TRAFFIC SIGNAL MODERNIZATION & LIGHTING

PROJECT: ACCM-0345(059)

STRUCTURE NO: 045-2040 & 045-2041
KANE COUNTY
C-91-298-12

D-91-298-12

*167-8 = 159

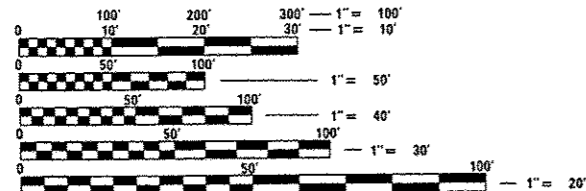


FOR INDEX OF SHEETS, SEE SHEET NO. 2

PROJECT LOCATED IN
VILLAGE OF PINGREE GROVE

FUNCTIONAL CLASSIFICATION
OTHER PRINCIPAL ARTERIAL

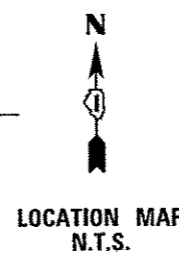
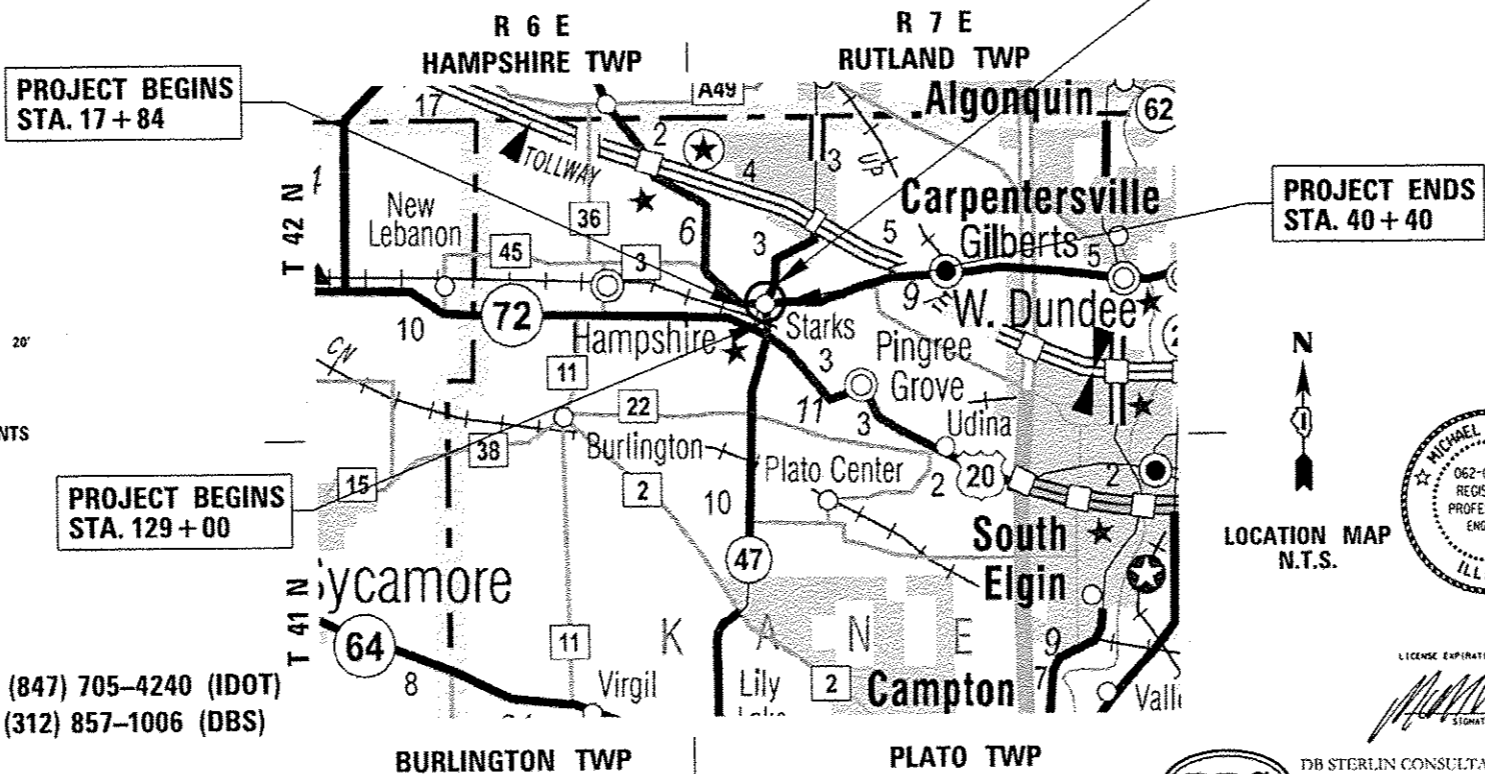
EAST LEG: 2011 ADT=8,800 POSTED SPEED=55 MPH
WEST LEG: 2011 ADT=6,700 POSTED SPEED=55 MPH
NORTH LEG: 2011 ADT=9,600 POSTED SPEED=45 MPH
SOUTH LEG: 2011 ADT=15,500 POSTED SPEED=45 MPH



FULL SIZE PLANS HAVE BEEN PREPARED USING STANDARD ENGINEERING SCALES. REDUCED SIZED PLANS WILL NOT CONFORM TO STANDARD SCALES. IN MAKING MEASUREMENTS ON REDUCED PLANS, THE ABOVE SCALES MAY BE USED.

J.U.L.I.E.
JOINT UTILITY LOCATION INFORMATION FOR EXCAVATION
1-800-892-0123
OR 811

DISTRICT ONE -
PROJECT MANAGER: DANIEL WILGREEN (847) 705-4240 (IDOT)
PROJECT ENGINEER: BEHZAD AMINI (312) 857-1006 (DBS)



LICENSE EXPIRATION DATE: 11/30/2015
SIGNATURE: [Signature] DATE: 3/24/14

STATE OF ILLINOIS
DEPARTMENT OF TRANSPORTATION
DIVISION OF HIGHWAYS

SUBMITTED March 31, 2014

[Signature] DEPUTY DIRECTOR OF HIGHWAYS, REGION ENGINEER

June 27, 2014
[Signature] ENGINEER OF DESIGN AND ENVIRONMENT

June 27, 2014
[Signature] DIRECTOR OF HIGHWAYS, CHIEF ENGINEER

DBS
DB STERLIN CONSULTANTS, INC.
123 N. WACKER DRIVE SUITE 2000
CHICAGO, ILLINOIS 60606
TEL. (312) 857-1006 FAX. (312) 857-1056

GROSS LENGTH = 4,802 FEET = 0.91 MILE
NET LENGTH = 4,802 FEET = 0.91 MILE

PRINTED BY THE AUTHORITY
OF THE STATE OF ILLINOIS

CONTRACT NO. 60T10