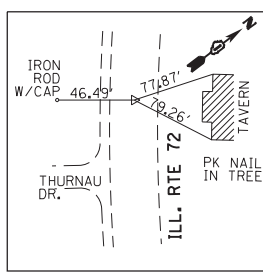


FILE NAME = G:\Projects\ILLINOIS Department of Transportation\PTB 162 - Item 7 - Various Various\Work Order No. 10 (North) - US 20 et. IL 47 & IL 72\Civil\Cadd Sheets\0160110-shr-ATB.dgn

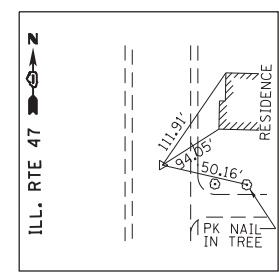
TIE POINT #1

SET PK NAIL
STA. 50+00
N=1973563.5608
E=949406.4439



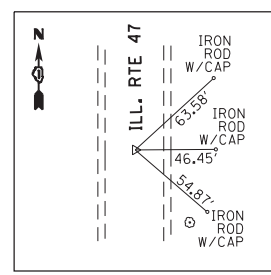
TIE POINT #2

SET PK NAIL (PT)
STA. 53+49.57
N=1973356.6492
E=949688.0400



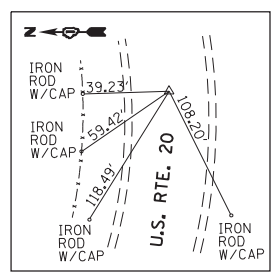
TIE POINT #3

SET PK NAIL
STA. 90+00
N=1971336.7617
E=952728.7141



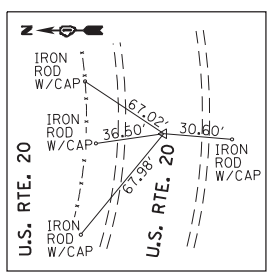
TIE POINT #4

SET PK NAIL (PT)
STA. 11+00.42
N=1974902.8733
E=948836.5033



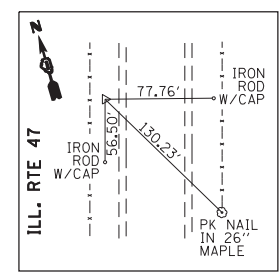
TIE POINT #5

SET PK NAIL
STA. 10+00
N=1974904.7095
E=948736.1049



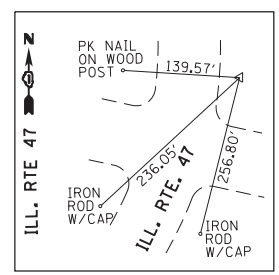
TIE POINT #6

SET IRON ROD W/CAP
N=1970751.0870
E=950069.8372
ELEV. 942.990



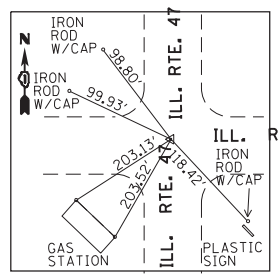
TIE POINT #7

SET IRON ROD W/CAP
N=1972560.8422
E=951142.8895
ELEV. 932.7800



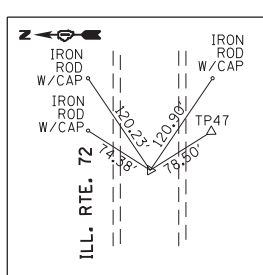
TIE POINT #9

SET IRON ROD W/CAP
N=1974942.0043
E=950681.6515
ELEV. 917.5800



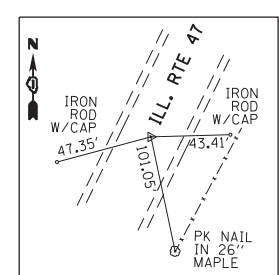
TIE POINT #10

SET PK NAIL
STA. 50+00
N=1974908.4483
E=952736.0819



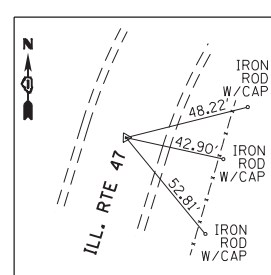
TIE POINT #11

SET PK NAIL
STA. 100+00
N=1970714.7898
E=950093.8924



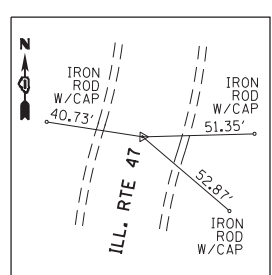
TIE POINT #12

SET PK NAIL (PC)
STA. 108+19.04
N=1971464.5035
E=950423.6785



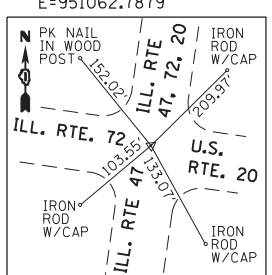
TIE POINT #13

SET PK NAIL (PRC)
STA. 115+50.48
N=1972057.7100
E=950843.1192



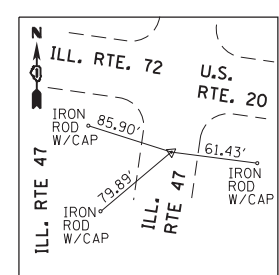
TIE POINT #14

SET PK NAIL (PC - ILL. RTE. 47)
STA. 120+00 - ILL. RTE. 47
STA. 70+00 - ILL. RTE. 72
N=1972443.4188
E=951062.7879



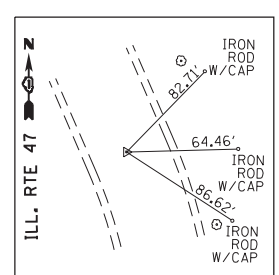
TIE POINT #15

SET PK NAIL (PT)
STA. 118+91.44
N=1972340.9142
E=951027.0490



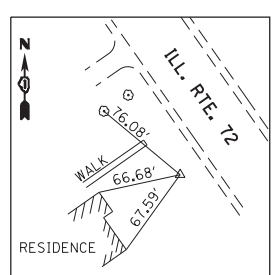
TIE POINT #16

SET PK NAIL (PT)
STA. 123+93.23
N=1972831.1472
E=95194.7099



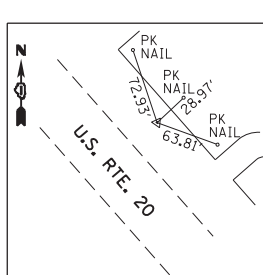
TIE POINT #17

SET IRON ROD W/CAP
N=1973304.0917
E=949723.4483
ELEV. 950.2300



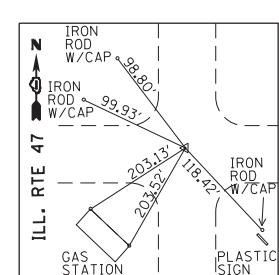
TIE POINT #18

SET IRON ROD W/CAP
N=1971622.6532
E=952445.9468
ELEV. 932.4900



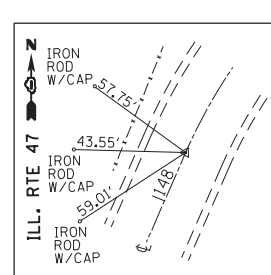
TIE POINT #19

SET PK NAIL (PI ILL. RTE. 47)
STA. 144+98.45
N=1974905.5890
E=950736.0840



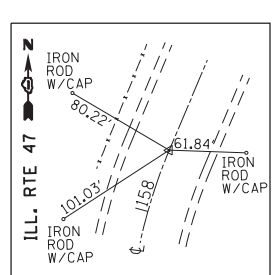
TIE POINT #20

SET PK NAIL (PC)
STA. 148+11.76
N=1975214.9147
E=950686.2593



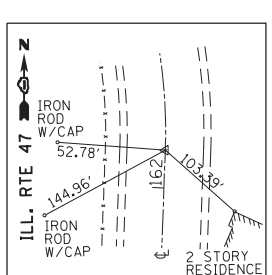
TIE POINT #21

SET PK NAIL (PT)
STA. 158+75.33
N=1976236.4318
E=950888.5277



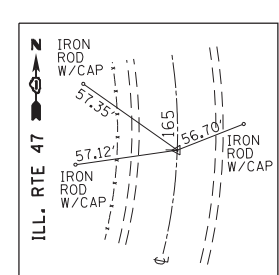
TIE POINT #22

SET PK NAIL (PC)
STA. 162+59.34
N=1976563.6783
E=951089.4625



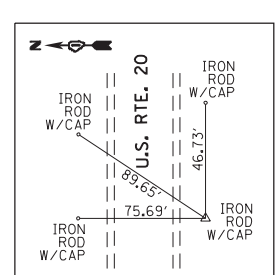
TIE POINT #23

SET PK NAIL
STA. 165+00
N=1976776.7983
E=951200.8360



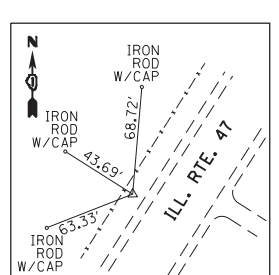
TIE POINT #47

SET IRON ROD W/CAP
N=1974868.5204
E=952803.6742
ELEV. 914.2750



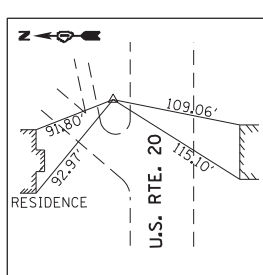
TIE POINT #50

SET IRON ROD W/CAP
N=1976426.1892
E=950969.3589
ELEV. 921.2600



TIE POINT #54

SET IRON ROD W/CAP
N=1974929.3999
E=949671.8954
ELEV. 934.6050



BENCHMARK #1

ELEV. 928.480

□ -CUT ON LIGHT POLE CONC. BASE ± 65' NORTH EASTERLY FROM CENTERLINE OF U.S. RTE. 20 AT THE ENTRANCE OF "MINUTEMAN" AT 14N845 U.S. RTE. 20

BENCHMARK #2

ELEV. 931.030

SET SPIKE IN THE NORTHWESTERLY FACE OF 32 INCH TREE AT THE NORTH EAST CORNER OF U.S. RTE. 20 AND ILL. RTE. 47 ±110' NORTH OF UTILITY POLE W/TRANSFORMER

BENCHMARK #3

ELEV. 940.475

□ -CUT ON SOUTH END OF THE WALL OF BOX CULVERT ON THE EAST SIDE OF ILL. RTE. 47 ABOUT 2300' SOUTH OF THE INTERSECTION OF ILL. RTE. 47 AND U.S. RTE. 20

BENCHMARK #4

ELEV. 948.335

□ -CUT ON CONC. BASE 1' NORTHWESTERLY OF THE NORTHERLY END OF ILLUMINATED SIGN OF "OLD STARKS" TAVERN 200' NORTH WESTERLY OF THE INTERSECTION OF ILL. RTE. 47 AND ILL. RTE. 72, AT 43W478 U.S. RTE. 72

BENCHMARK #5

ELEV. 915.520

□ -CUT ON THE 3RD STEP FROM THE ROAD LEVEL OF CONC. STAIRS TO BRICK PUMP HOUSE ABOUT 90' NW OF RAILROAD BRIDGE OVER ILL. RTES 47 AND 72, AND U.S. RTE. 20

BENCHMARK #6

ELEV. 922.000

□ -CUT ON LIGHT POLE CONC BASE ±35' NORTH OF THE NORTH GAS OF "BP" GAS STATION AT THE SW CORNER OF U.S. RTE. 20 AND ILL. RTE. 47.

BENCHMARK #7

ELEV. 931.820

SET SPIKE IN THE SOUTHEASTERLY FACE OF THE 3RD UTILITY POLE ON THE NORTH SIDE OF U.S. RTE. 20, PAST OF GRAVEL DRIVEWAY AT 43W706(708) U.S. RTE. 20, ABOUT 2100' W OF THE INTERSECTION OF U.S. RTE. 20 AND ILL. RTE. 47.

BENCHMARK #8

ELEV. 915.095

SET SPIKE IN THE EAST FACE OF 34" OAK ABOUT 50' WEST OF THE WESTERLY R.O.W. LINE OF ILL. RTE. 47 AND 1950' NORTH OF THE INTERSECTION OF ILL. RTE. 47 AND U.S. RTE. 20, ACROSS FROM "NICOR GAS" STATION 299

USER NAME = chrishfish	DESIGNED - MTM	REVISED -
DRAWN - MTM	REVISIONS -	
PLOT SCALE = 400.000' / in.	CHECKED - BA	REVISIONS -
PLOT DATE = 4/1/2014	DATE - 3/31/14	REVISIONS -

STATE OF ILLINOIS
DEPARTMENT OF TRANSPORTATION

ALIGNMENT, TIES AND BENCHMARKS
U.S. RTE. 20 AT ILL. RTE. 47 AND ILL. RTE. 72

SCALE: 1"=200' SHEET 2 OF 2 SHEETS STA. TO STA.

F.A.P. RTE.	SECTION	COUNTY	TOTAL SHEETS	SHEET NO.
345	106-S-N-1	KANE	167	27
CONTRACT NO. 60710				
ILLINOIS FED. AID PROJECT				