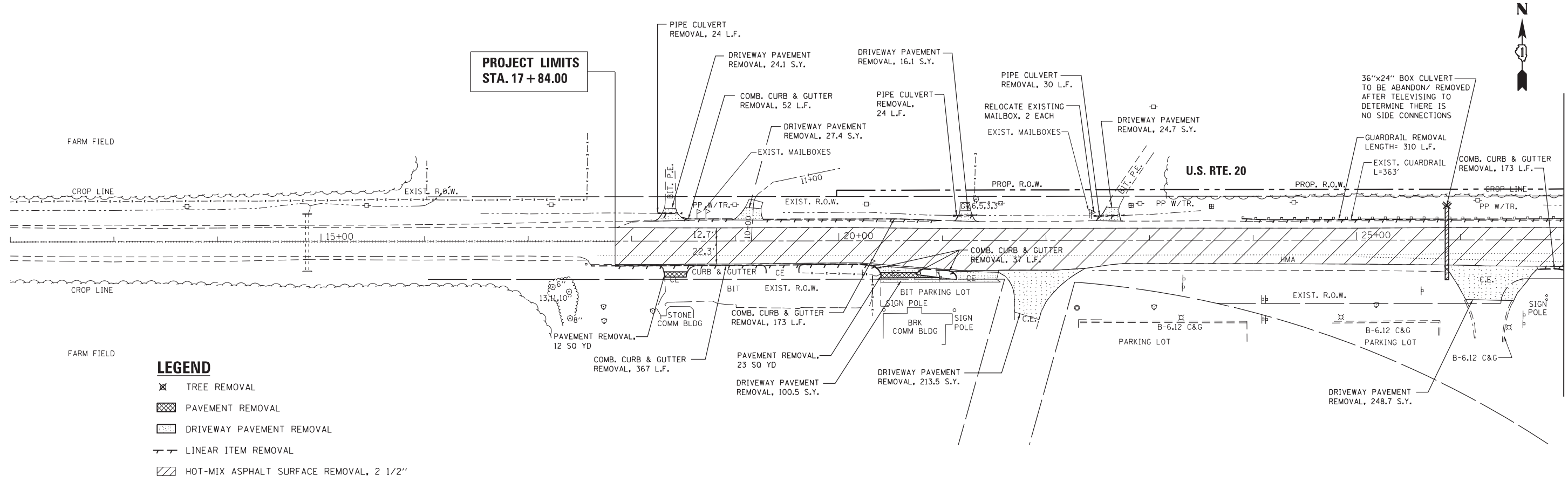
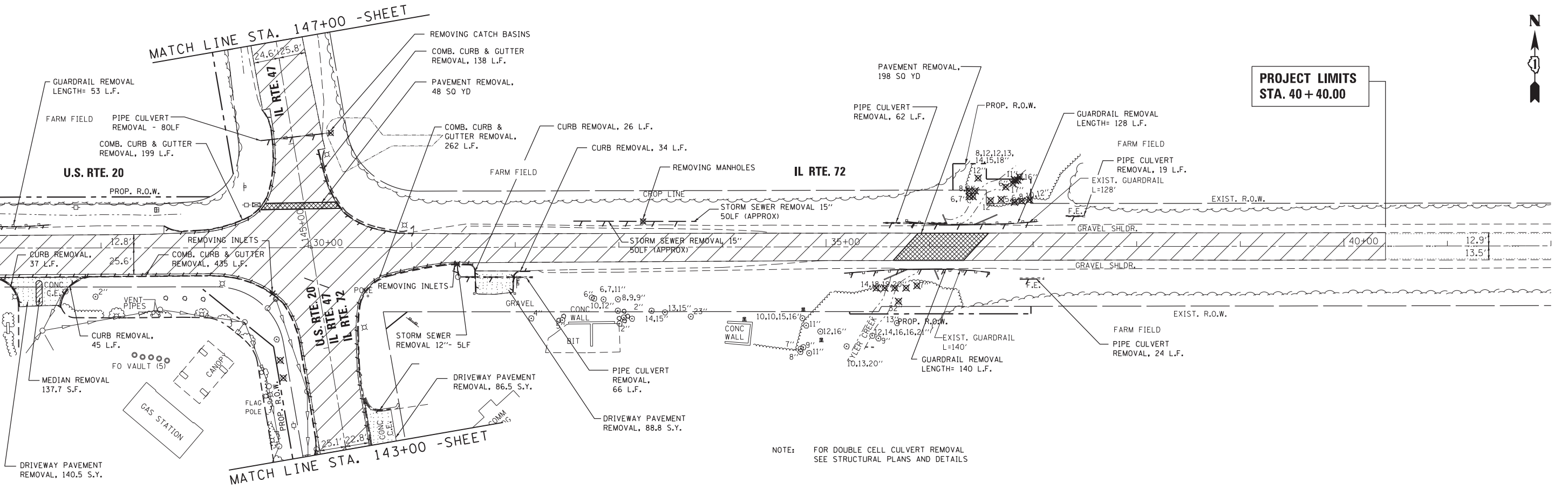


G:\Projects\ILLINOIS Department of Transportation\PTB 162 - Item 7 - Various Various\Work Order No. 10 (North)- US 20 at IL 47 & IL-72\Civil\Cadd Sheets\160110-sht-removal.dgn



MATCH LINE STA. 27+00 - SEE BELOW



NOTE: FOR DOUBLE CELL CULVERT REMOVAL SEE STRUCTURAL PLANS AND DETAILS

FILE NAME =	USER NAME = chr1sf1sh	DESIGNED - MTM	REVISED -	STATE OF ILLINOIS DEPARTMENT OF TRANSPORTATION	EXISTING CONDITIONS AND REMOVAL PLAN US RTE 20 (NORTH JUNCTION)			F.A.P. RTE.	SECTION	COUNTY	TOTAL SHEETS	SHEET NO.
Default	PLOT SCALE = 100.0000' / in.	DRAWN - MTM	REVISED -					345	106-S-N-1	KANE	167	28
	PLOT DATE = 4/1/2014	CHECKED - BA	REVISED -		CONTRACT NO. 60T10							
		DATE - 3/31/14	REVISED -		ILLINOIS FED. AID PROJECT							