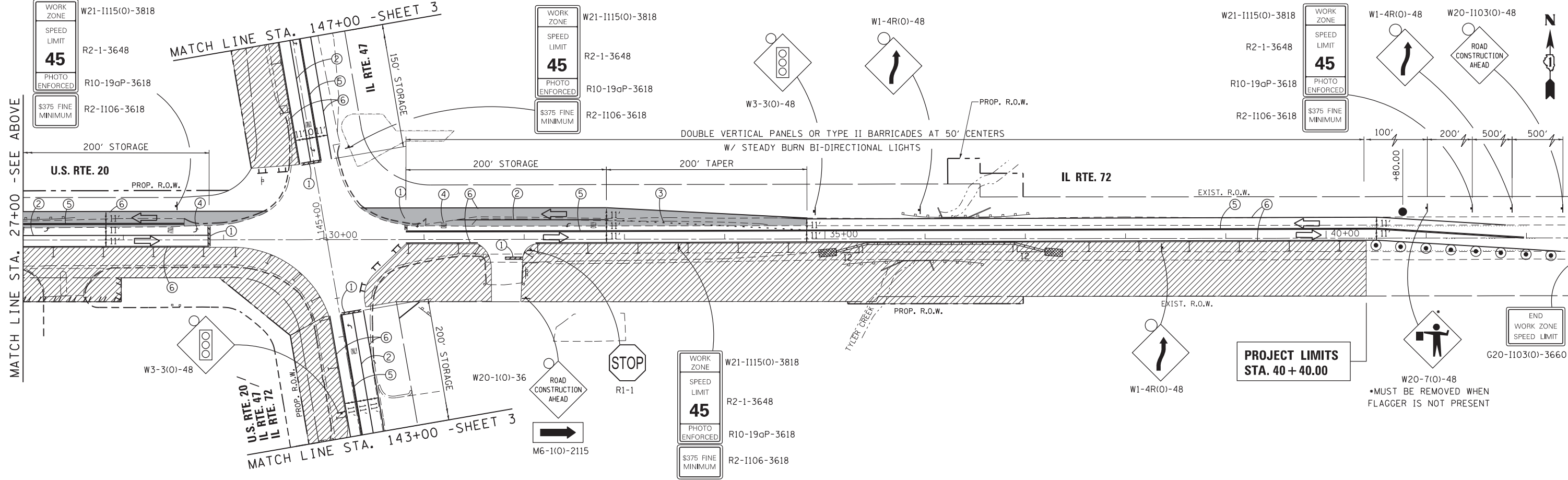
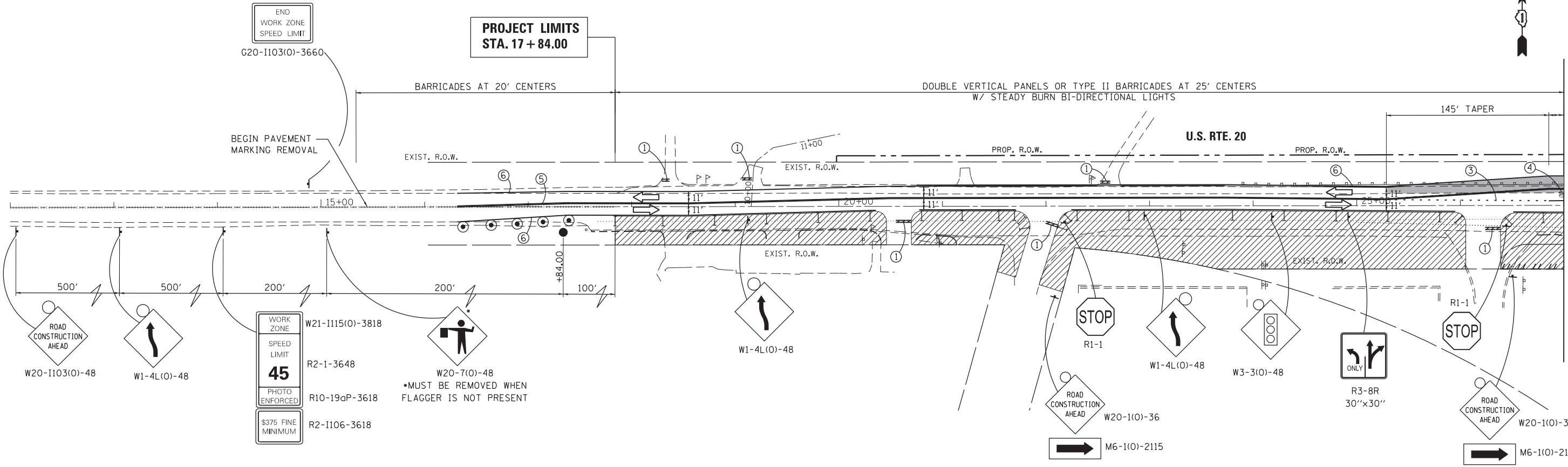




MATCH LINE STA. 27+00 - SEE BELOW



G:\Projects\ILLINOIS Department of Transportation\162 - Item 7 - Various Various Work Order No. 18 (North - US 20 at IL 47 & IL 72)\Civil\Cadd Sheets\162110-sht-staging.dgn

FILE NAME =	USER NAME = chr1sf1sh	DESIGNED - MTM	REVISED -
Default		DRAWN - MTM	REVISED -
	PLOT SCALE = 100.0000' / in.	CHECKED - BA	REVISED -
	PLOT DATE = 4/1/2014	DATE - 3/31/14	REVISED -

**STATE OF ILLINOIS  
DEPARTMENT OF TRANSPORTATION**

<b>SUGGESTED MAINTENANCE OF TRAFFIC - STAGE 2</b>			
<b>US RTE 20 (NORTH JUNCTION)</b>			
SCALE: 1"=50'	SHEET 2	OF 6 SHEETS	STA. 17+84 TO STA. 40+40

F.A.P. RTE.	SECTION	COUNTY	TOTAL SHEETS	SHEET NO.
345	106-S-N-1	KANE	167	41
CONTRACT NO. 60T10				
ILLINOIS FED. AID PROJECT				