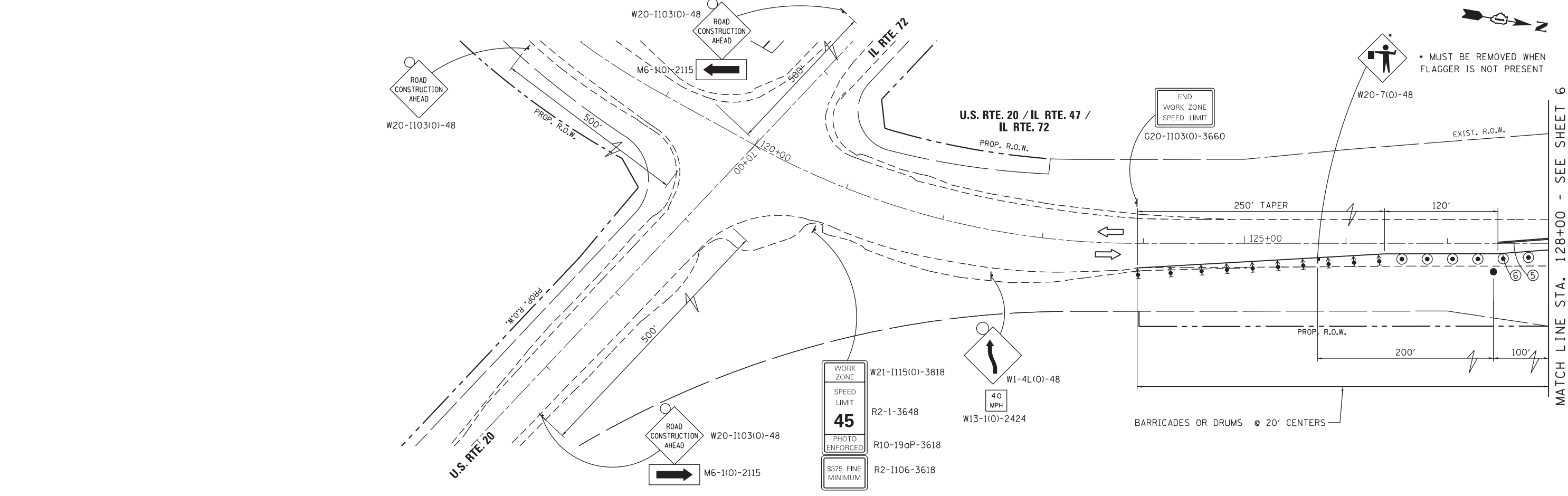
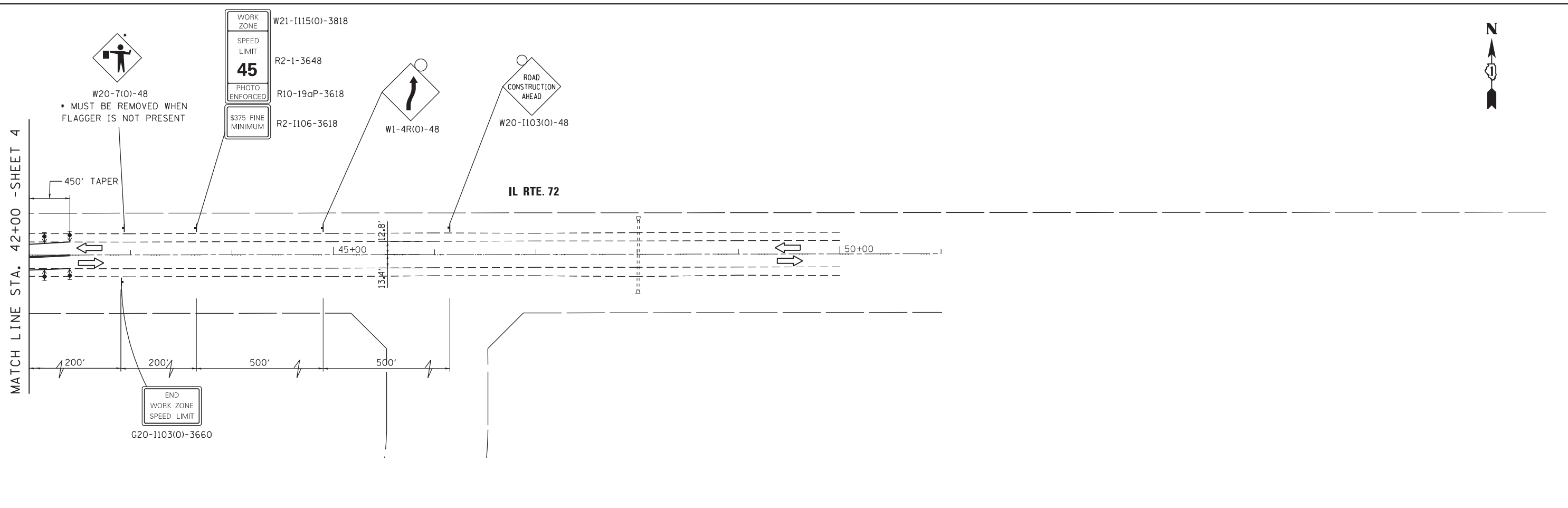


G:\Projects\ILLINOIS Department of Transportation\PTB 162 - Item 7 - Various Various\Work Order No. 10 (North) - US 20 at IL 47 & IL 72\Civil\Cadd Sheets\162118-sht-staging2.dgn



FILE NAME =	USER NAME = chr15fish	DESIGNED - MTM	REVISED -
		DRAWN - MTM	REVISED -
	PLOT SCALE = 100.0000' / in.	CHECKED - BA	REVISED -
Default	PLOT DATE = 4/1/2014	DATE - 3/31/14	REVISED -

**STATE OF ILLINOIS
DEPARTMENT OF TRANSPORTATION**

**SUGGESTED MAINTENANCE OF TRAFFIC - STAGE 3
US RTE 20 (NORTH JUNCTION)**

SCALE: 1"=50' SHEET 5 OF 6 SHEETS STA. TO STA.

F.A.P. RTE.	SECTION	COUNTY	TOTAL SHEETS	SHEET NO.
345	106-S-N-1	KANE	167	44
CONTRACT NO. 60T10				
ILLINOIS FED. AID PROJECT				