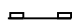
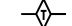



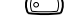
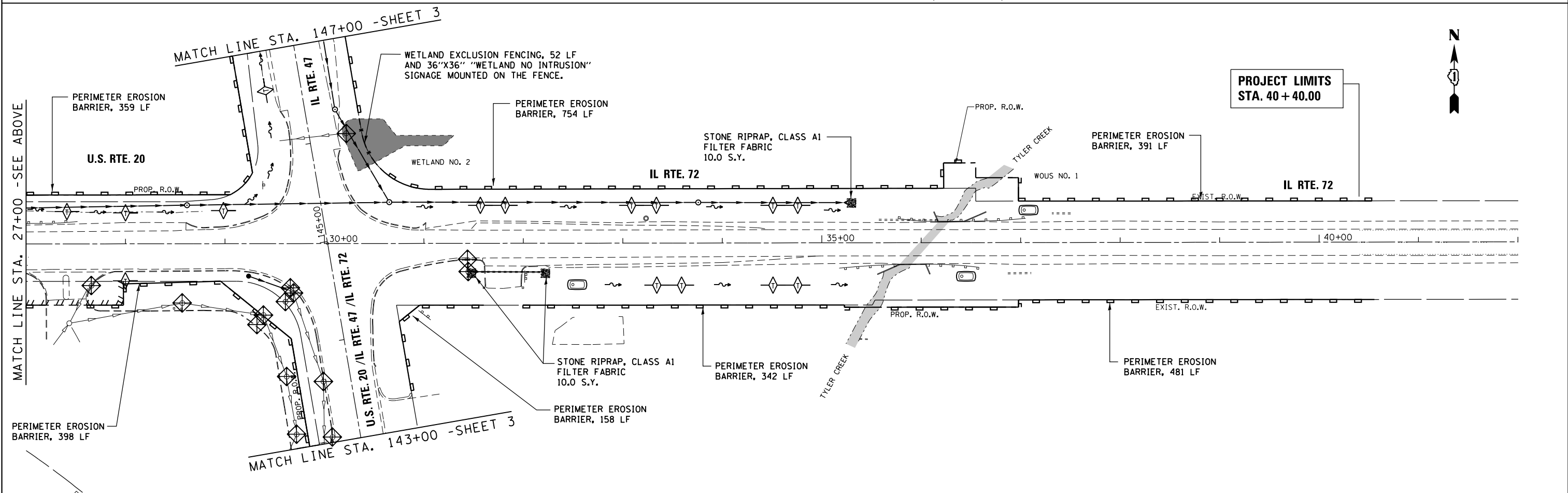
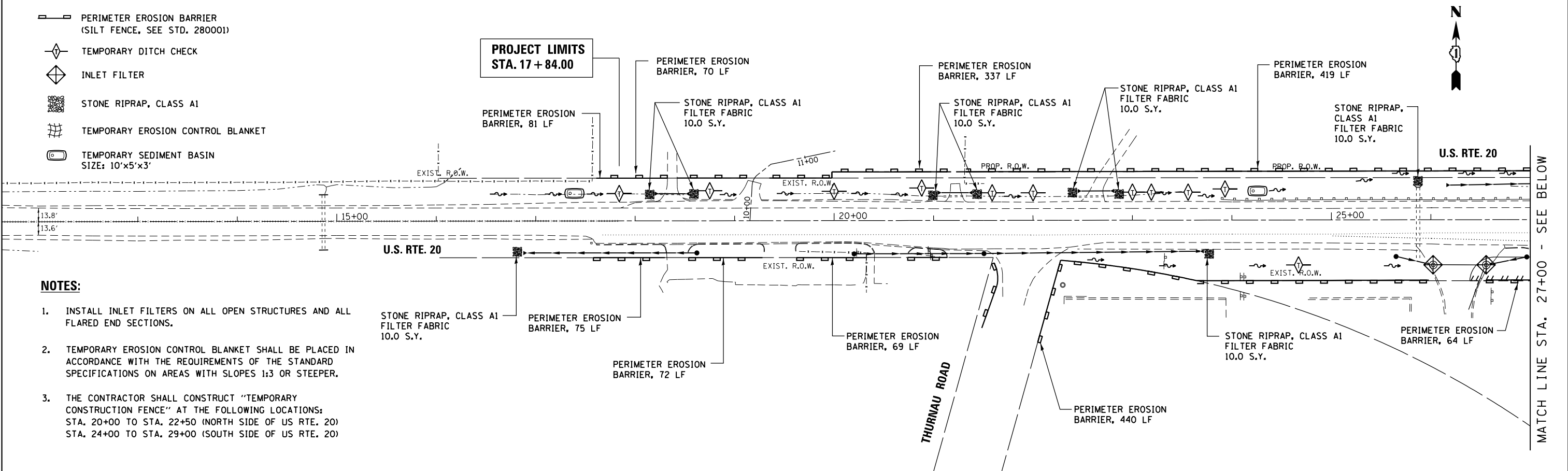


LEGEND:

-  PERIMETER EROSION BARRIER (SILT FENCE, SEE STD. 280001)
-  TEMPORARY DITCH CHECK
-  INLET FILTER
-  STONE RIPRAP, CLASS A1
-  TEMPORARY EROSION CONTROL BLANKET
-  TEMPORARY SEDIMENT BASIN SIZE: 10'x5'x3'

NOTES:

1. INSTALL INLET FILTERS ON ALL OPEN STRUCTURES AND ALL FLARED END SECTIONS.
2. TEMPORARY EROSION CONTROL BLANKET SHALL BE PLACED IN ACCORDANCE WITH THE REQUIREMENTS OF THE STANDARD SPECIFICATIONS ON AREAS WITH SLOPES 1:3 OR STEEPER.
3. THE CONTRACTOR SHALL CONSTRUCT "TEMPORARY CONSTRUCTION FENCE" AT THE FOLLOWING LOCATIONS:
 STA. 20+00 TO STA. 22+50 (NORTH SIDE OF US RTE. 20)
 STA. 24+00 TO STA. 29+00 (SOUTH SIDE OF US RTE. 20)



FILE NAME =	USER NAME = #USER#	DESIGNED - MTM	REVISED - 5/2/14 BA	STATE OF ILLINOIS DEPARTMENT OF TRANSPORTATION	TEMPORARY EROSION & SEDIMENT CONTROL DETAILS - STAGE I U.S. RTE 20 (NORTH JUNCTION)	F.A.P. RTE. 345	SECTION 106-S-N-1	COUNTY KANE	TOTAL SHEETS 167	SHEET NO. 47
	PLOT SCALE = #SCALE#	CHECKED - BA	REVISIED -			SCALE: 1"=50'	SHEET 2 OF 5 SHEETS	STA. 17+84 TO STA. 40+40	CONTRACT NO. 60T10	
#MODELNAME#	PLOT DATE = #DATE#	DATE - 3/31/14	REVISIED -							