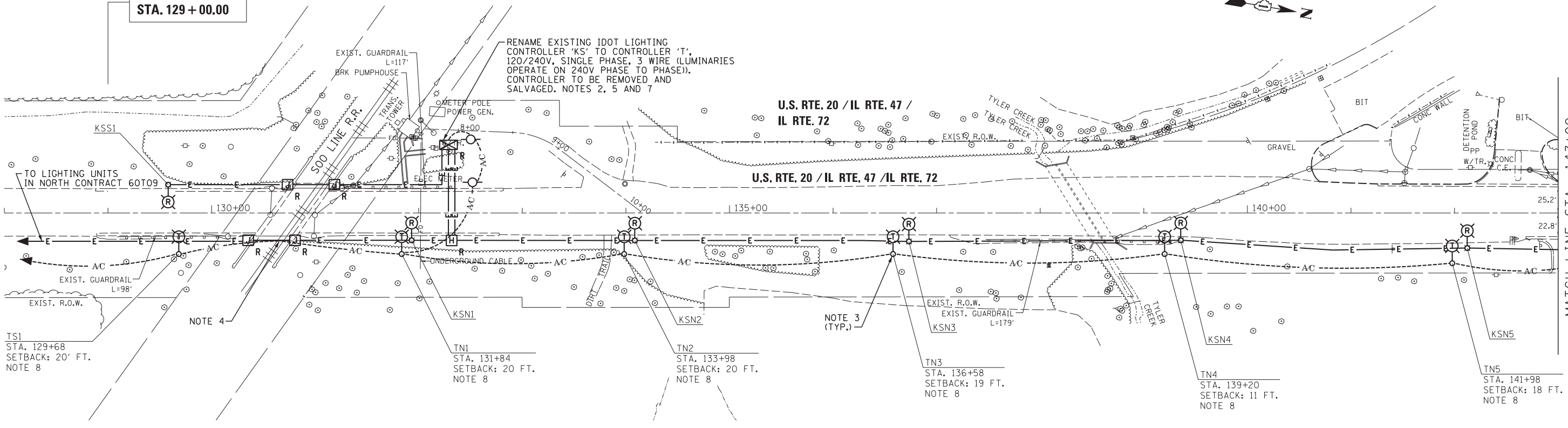


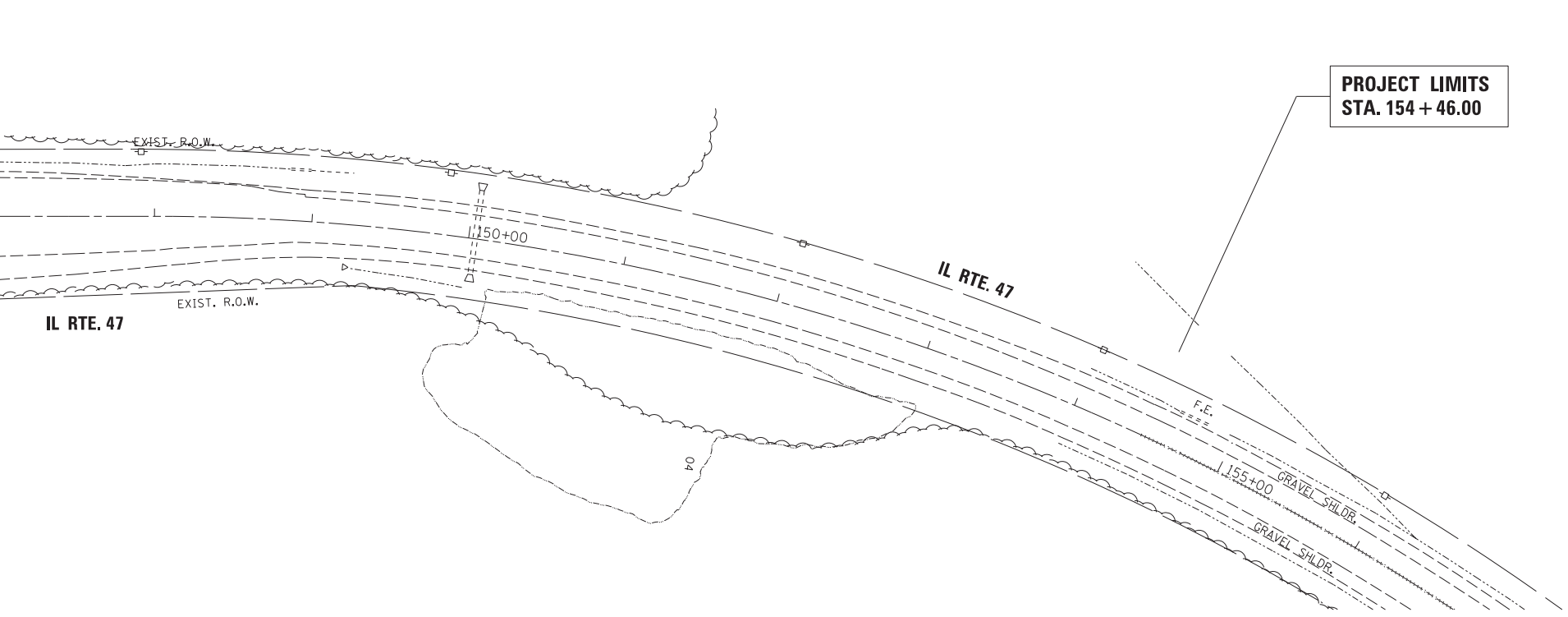
**PROJECT LIMITS
STA. 129+00.00**



MATCH LINE STA. 143+00
SEE DRAWING RL-02

SEE DRAWING RL-02
MATCH LINE STA. 147+00

**PROJECT LIMITS
STA. 154+46.00**



- NOTE:**
- SEE DRAWING RL-01 FOR ELECTRICAL SYMBOLS, ABBREVIATIONS AND GENERAL NOTES.
 - THE EXISTING IDOT LIGHTING CONTROLLER TO BE REMOVED IS LOCATED INSIDE THE FENCE AREA FOR THE PUMP STATION. THE CONTROLLER SHALL BE REMOVED AND SALVAGED TO IDOT. THE CONTROLLER FOUNDATION SHALL BE REMOVED AND DISPOSED OF PROPERLY.
 - FINAL LOCATIONS OF THE TEMPORARY LIGHTING UNITS AND WOOD POLES TO BE DETERMINED IN THE FIELD BY THE ENGINEER.
 - TEMPORARILY ATTACH THE AERIAL CABLE TO THE FACE OF THE BRIDGE ABUTMENT A MINIMUM OF 15 FEET ABOVE PAVEMENT.
 - PROVIDE A TEMPORARY POWER CONNECTION FROM THE EXISTING LIGHTING CONTROLLER TO THE TEMPORARY LIGHTING UNITS.
 - EXISTING LUMINARIES OPERATE ON 240V (PHASE TO PHASE).
 - CHANGE CONTROLLER LABEL FROM "KS" TO "T". CHANGE OF LABEL WILL BE INCIDENTAL TO CONTRACT.
 - SETBACK SHALL BE MEASURED AS THE DISTANCE FROM THE EDGE OF EXISTING PAVEMENT TO THE CENTER OF THE POLE.

RL-03

FILE NAME =	USER NAME = \$USER\$	DESIGNED - WDS	REVISED - 4/25/2014 WDS
FILES		DRAWN - HA	REVISED -
	PLOT SCALE = \$SCALE\$	CHECKED - JPC	REVISED -
MODELNAME	PLOT DATE = \$DATE\$	DATE - 3/28/2014	REVISED -

**STATE OF ILLINOIS
DEPARTMENT OF TRANSPORTATION**

**EXISTING/TEMPORARY LIGHTING AND DEMOLITION PLAN
U.S. RTE 20 (NORTH JUNCTION)**

SCALE: 1"=50' SHEET 2 OF 2 SHEETS STA. TO STA.

F.A.P. RTE.	SECTION	COUNTY	TOTAL SHEETS	SHEET NO.
345	106-S-N-1	KANE	167	91
CONTRACT NO. 60T10				
ILLINOIS FED. AID PROJECT				