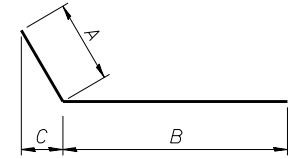
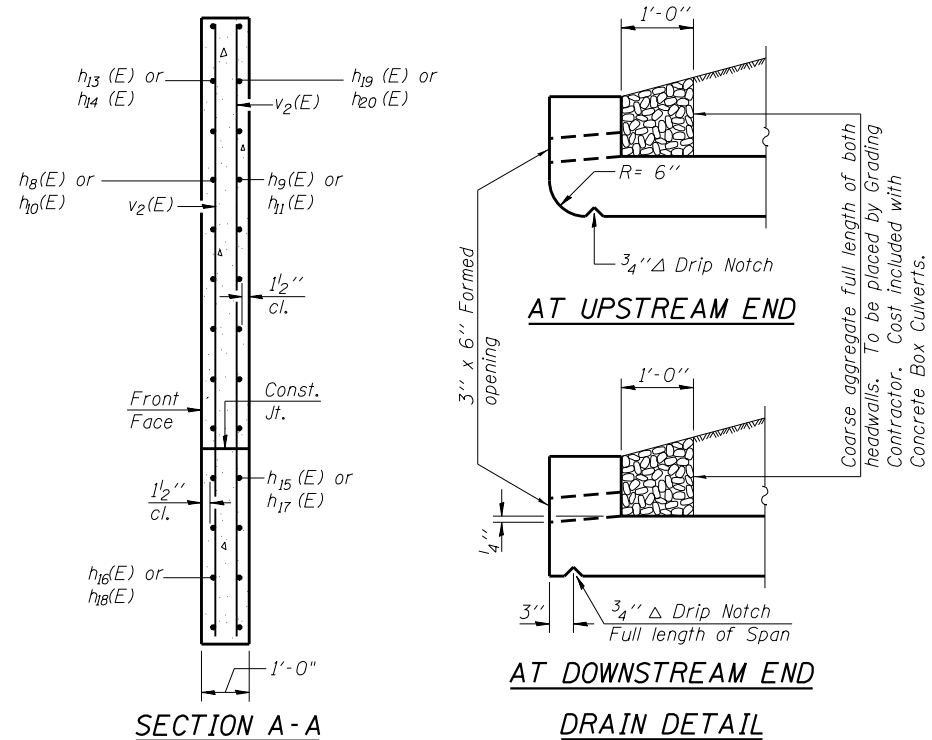
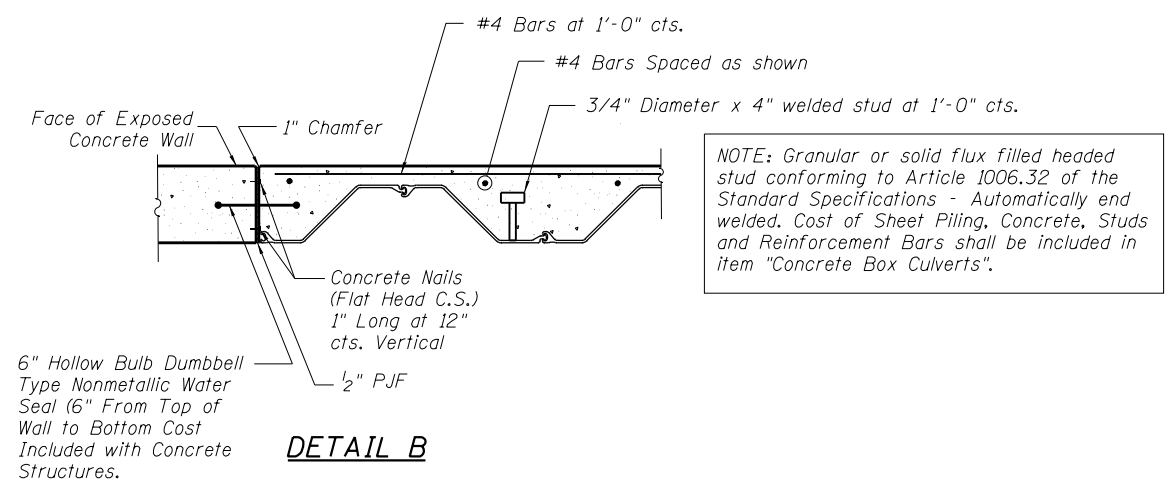


NOTCH DETAIL **LONGITUDINAL SECTION**
PHOEBE NESTING SITE
 (Near downstream end)



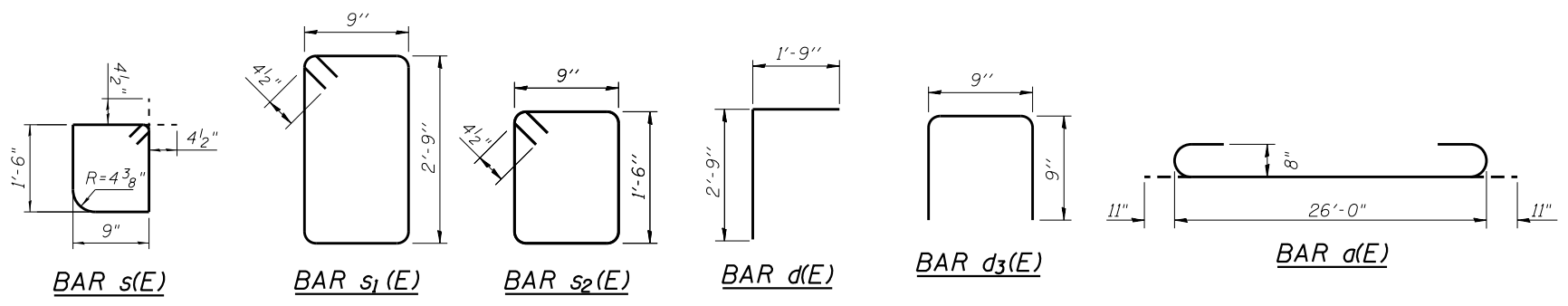
BARS h8(E) Thru h11(E), h15(E) & h20(E)

Bar	A	B	C
h8(E)	3'-0"	5'-0"	1'-5 1/2"
h9(E)	3'-0"	14'-6"	2'-7 1/2"
h10(E)	3'-0"	5'-0"	2'-7 1/2"
h11(E)	3'-0"	10'-6"	1'-5 1/2"
h15(E)	3'-0"	14'-6"	2'-7 1/2"
h16(E)	3'-0"	14'-0"	2'-7 1/2"
h17(E)	3'-0"	10'-6"	1'-5 1/2"
h18(E)	3'-0"	10'-0"	1'-5 1/2"
h19(E)	3'-0"	14'-6"	2'-7 1/2"
h20(E)	3'-0"	10'-6"	1'-5 1/2"



BILL OF MATERIAL

Bar	No.	Size	Length	Shape
a (E)	410	#7	27'-10"	C
a1 (E)	396	#8	12'-0"	—
a2 (E)	404	#4	8'-3"	—
d (E)	62	#4	4'-6"	—
d1 (E)	30	#5	2'-5"	—
d2 (E)	8	#4	1'-6"	—
d3 (E)	15	#4	2'-3"	—
h (E)	216	#5	31'-9"	—
h2 (E)	60	#5	31'-9"	—
h3 (E)	216	#5	38'-9"	—
h5 (E)	60	#5	38'-9"	—
h6 (E)	6	#8	30'-7"	—
h7 (E)	6	#7	30'-7"	—
h8 (E)	32	#6	8'-0"	—
h9 (E)	32	#7	17'-6"	—
h10 (E)	32	#7	8'-0"	—
h11 (E)	32	#6	13'-6"	—
h13 (E)	24	#4	9'-9"	—
h14 (E)	24	#4	13'-9"	—
h15 (E)	10	#7	17'-6"	—
h16 (E)	10	#7	17'-0"	—
h17 (E)	10	#7	13'-6"	—
h18 (E)	10	#6	13'-0"	—
h19 (E)	6	#7	17'-6"	—
h20 (E)	6	#6	13'-6"	—
v (E)	546	#5	8'-8"	—
v1 (E)	4	#5	8'-9"	—
v2 (E)	104	#4	11'-6"	—
s (E)	32	#4	5'-3"	□
s1 (E)	32	#4	7'-9"	□
s2 (E)	32	#4	5'-3"	□
Concrete Box Culverts			Cu. Yd.	377.9
Reinforcement Bars, Epoxy Coated			Pound	70,450
Bars Splicers			Each	125



PLOT DATE = \$DATE\$
 FILE NAME = \$FILEL\$

USER NAME =	DESIGNED - MBC	REVISED -
PLOT SCALE =	DRAWN - SSR	REVISED -
PLOT DATE =	CHECKED - GFP	REVISED -
FILE NAME =	DATE - 5/12/14	REVISED -



STATE OF ILLINOIS
DEPARTMENT OF TRANSPORTATION

CULVERT SECTIONS AND DETAILS
STRUCTURE NO. 045-2040

F.A.P. RTE.	SECTION	COUNTY	TOTAL SHEETS	SHEET NO.
345	106-S-N-1	KANE	167	109
CONTRACT NO. 60T10				
FED. ROAD DIST. NO. 1 ILLINOIS FED. AID PROJECT				

SHEET NO. S6 OF S9 SHEETS