

STATE OF ILLINOIS
DEPARTMENT OF TRANSPORTATION
DIVISION OF HIGHWAYS

**PROPOSED
HIGHWAY PLANS**

F.A.U. ROUTE 0291: DIVISION STREET
ENTRANCE TO PRISON FARM TO BROADWAY ST.
SECTION: 2012-049RS
RESURFACING
WILL COUNTY

C-91-574-12

F.A.U. RTE.	SECTION	COUNTY	TOTAL SHEETS	SHEET NO.
0291	2012-049RS	WILL	12	1
ILLINOIS		CONTRACT NO. 60V50		

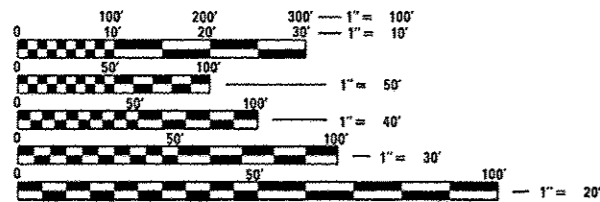
D-91-574-12

FOR INDEX OF SHEETS, SEE SHEET NO. 2

IMPROVEMENT IS LOCATED
IN THE VILLAGE OF CREST HILL

TRAFFIC DATA

2012 ADT = 3150
POSTED SPEED = 50 MPH

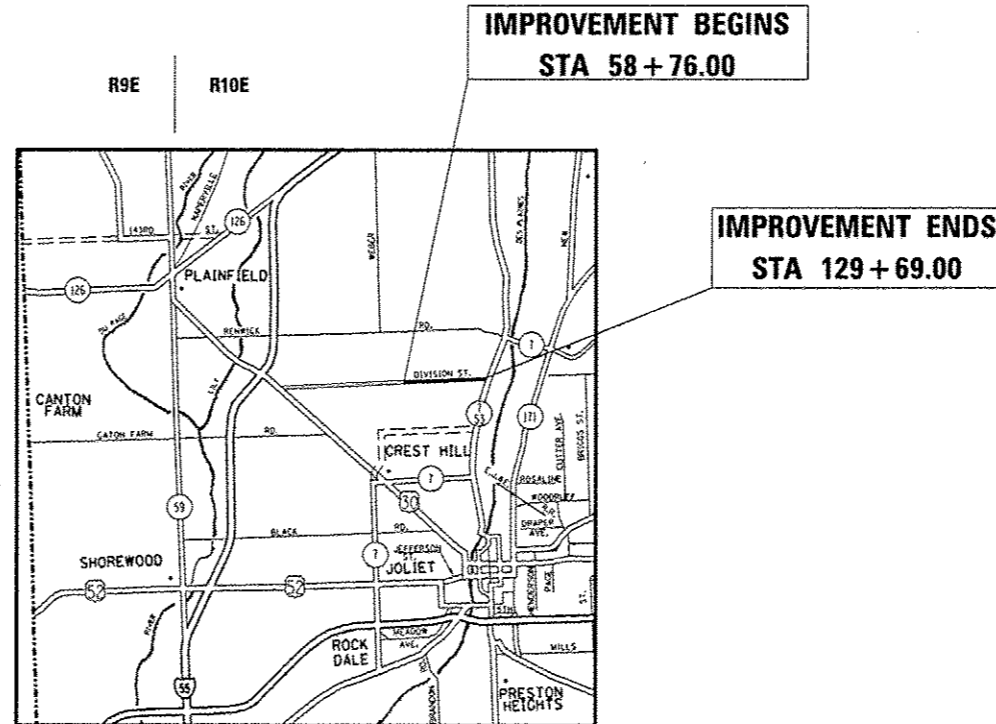


FULL SIZE PLANS HAVE BEEN PREPARED USING STANDARD ENGINEERING SCALES. REDUCED SIZED PLANS WILL NOT CONFORM TO STANDARD SCALES. IN MAKING MEASUREMENTS ON REDUCED PLANS, THE ABOVE SCALES MAY BE USED.

J.U.L.I.E.
JOINT UTILITY LOCATION INFORMATION FOR EXCAVATION
1-800-892-0123
OR 811

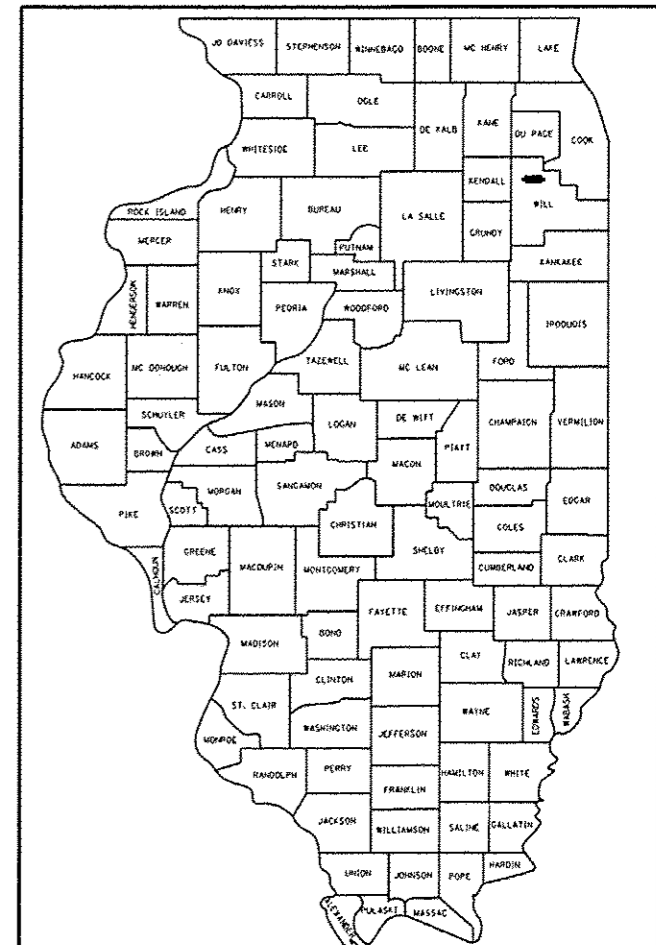
PROJECT ENGINEER: J. ALAIN MIDY (847)-221-3057
PROJECT MANAGER: ISSAM RAYYAN (847) 705-4178

CONTRACT NO. 60V50



LOCKPORT TOWNSHIP

GROSS LENGTH = 7093.00 FT. = 1.34 MILE
NET LENGTH = 7093.00 FT. = 1.34 MILE



LOCATION OF SECTION INDICATED THUS: - [black rectangle] -

STATE OF ILLINOIS
DEPARTMENT OF TRANSPORTATION
DIVISION OF HIGHWAYS

SUBMITTED May 16 20 14
John D. Baranzelli, PE, BS
DEPUTY DIRECTOR OF HIGHWAYS, REGION ENGINEER
June 27 20 14
John D. Baranzelli, PE, BS
ENGINEER OF DESIGN AND ENVIRONMENT
June 27 20 14
Omer Osman, PE, BS
DIRECTOR OF HIGHWAYS, CHIEF ENGINEER

PRINTED BY THE AUTHORITY
OF THE STATE OF ILLINOIS