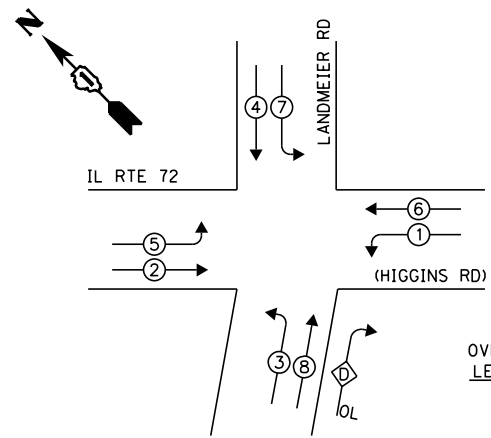


EXISTING CONTROLLER SEQUENCE



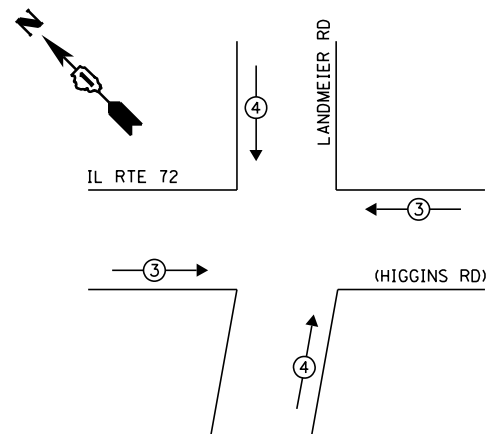
LEGEND:

- ◀◻▶ SINGLE ENTRY PHASE
- ◀◉▶ DUAL ENTRY PHASE
- ◀◉▶ PEDESTRIAN PHASE
- ◀◉▶ OVERLAP

$$\frac{\text{OVERLAP LETTER}}{D} = \frac{\text{PERMISSIVE PHASE}}{8} + \frac{\text{PROTECTED PHASE}}{1}$$

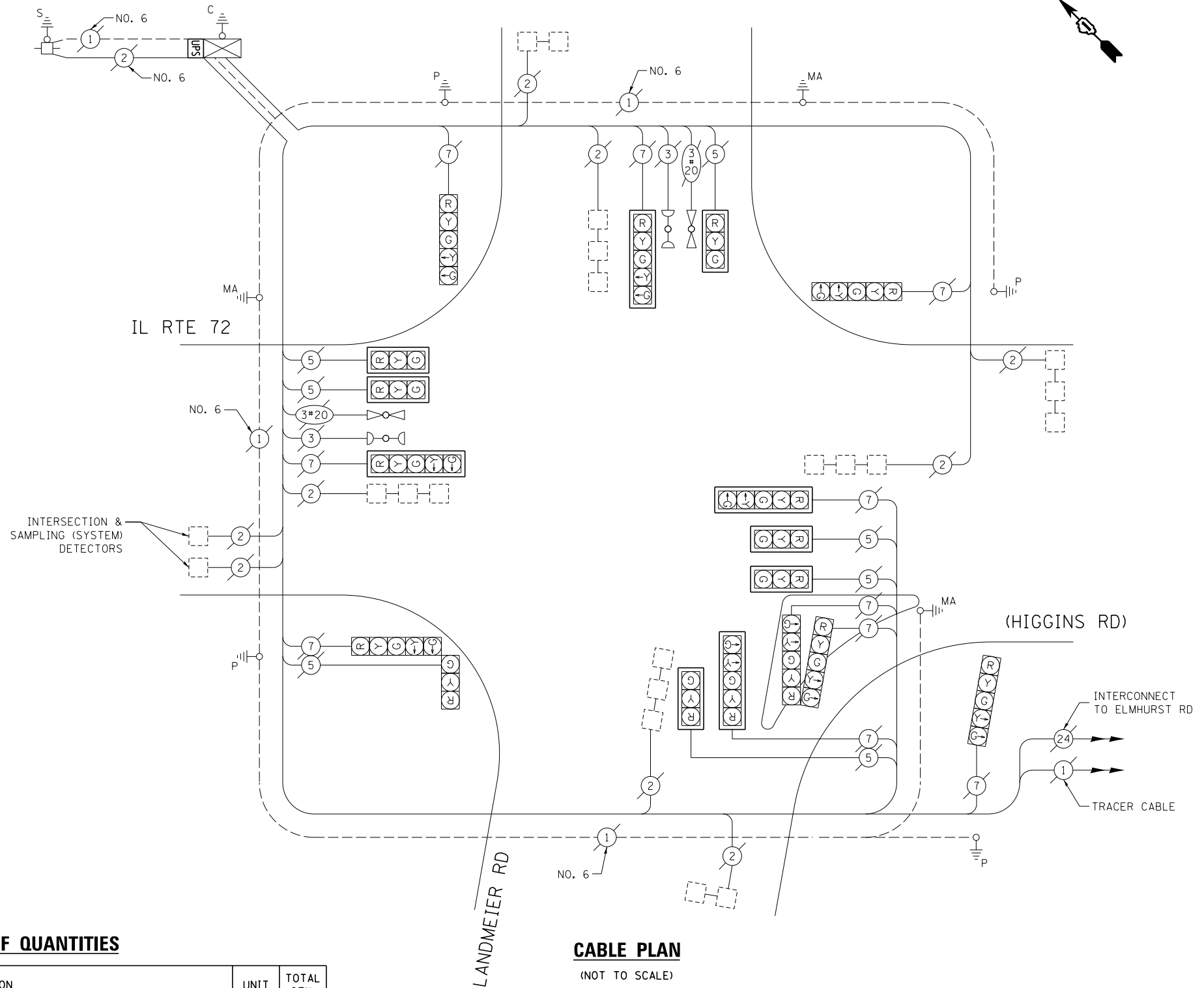
EXISTING PHASE DESIGNATION DIAGRAM

EXISTING EMERGENCY VEHICLE PREEMPTION SEQUENCE



EXISTING EMERGENCY VEHICLE PREEMPTORS		
EMERGENCY VEHICLE PREEMPTOR	3	4
MOVEMENT	← =	↑ ↓

REPLACE ALL TRAFFIC SIGNAL BACKPLATES



CABLE PLAN

(NOT TO SCALE)

SCHEDULE OF QUANTITIES

ITEM DESCRIPTION	UNIT	TOTAL QTY.
MAINTENANCE OF EXISTING TRAFFIC SIGNAL INSTALLATION	EACH	1
TRAFFIC SIGNAL BACKPLATE, LOUVERED, ALUMINUM	EACH	10
MODIFY EXISTING CONTROLLER CABINET	EACH	1
REMOVE EXISTING TRAFFIC SIGNAL EQUIPMENT	EACH	1
UNINTERRUPTABLE POWER SUPPLY, SPECIAL	EACH	1

THE FOLLOWING ITEMS SHALL BE REMOVED BY THE CONTRACTOR AND SHALL BE DISPOSED OF BY THEM OUTSIDE THE RIGHT-OF-WAY AT THEIR EXPENSE. THE SALVAGE VALUE OF THE REMOVED EQUIPMENT SHALL BE REFLECTED IN THE CONTRACT BID PRICE.

10 EACH TRAFFIC SIGNAL BACKPLATE

I.D.O.T. TRAFFIC SIGNAL INSTALLATION ELECTRICAL SERVICE REQUIREMENTS					TOTAL WATTAGE
TYPE	NO. OF LAMPS	WATTAGE		% OPERATION	
SIGNAL (RED)	17	INCAND.	LED	0.50	144.5
(YELLOW)	17		25	0.25	106.25
(GREEN)	17		15	0.25	63.75
ARROW	20		12	0.10	24.0
PED. SIGNAL	-		25	1.00	-
CONTROLLER	1		100	1.00	100.0
ILLUM. SIGN	-		25	0.05	-
VIDEO SYSTEM	-		150	1.00	-
FLASHER				0.50	
ENERGY COSTS TO:	TOTAL =				438.5

ELK GROVE VILLAGE
 901 WELLINGTON AVE
 ELK GROVE VILLAGE, IL 60007
 ENERGY SUPPLY: CONTACT: DAVE SCHACHT
 PHONE: (630) 437-2129
 COMPANY: COMMONWEALTH EDISON

FILE NAME =	USER NAME = poc1echal	DESIGNED - IP	REVISED -
et:\pwork\p1dot\poc1echal\08381174\012314-sh-t-tsl.dgn		DRAWN - IP	REVISED -
Default	PLOT SCALE = 40.0000' / in.	CHECKED - AW / LP	REVISED -
	PLOT DATE = 5/16/2014	DATE - 5/15/2014	REVISED -

**STATE OF ILLINOIS
 DEPARTMENT OF TRANSPORTATION**

**CABLE PLAN, PHASE DESIGNATION DIAGRAM, EMERGENCY VEHICLE PREEMPTION SEQUENCE, AND SCHEDULE OF QUANTITIES
 IL RTE 72 (HIGGINS RD) AT LANDMEIER RD**

SCALE: SHEET OF SHEETS STA. TO STA.

F.A. RTE.	SECTION	COUNTY	TOTAL SHEETS	SHEET NO.
--	2014-008T5	COOK	81	39
				CONTRACT NO. 60X83
ILLINOIS FED. AID PROJECT				

TS 3215