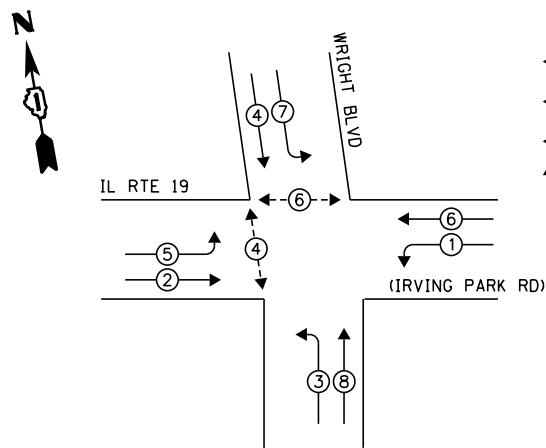


**EXISTING CONTROLLER SEQUENCE**



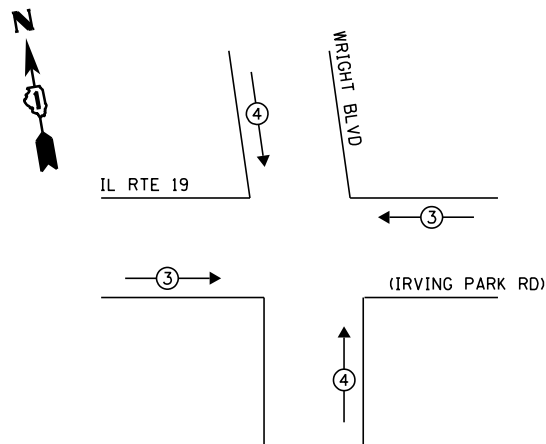
**LEGEND:**

- ◁ □ ▷ SINGLE ENTRY PHASE
- ◁ ○ ▷ DUAL ENTRY PHASE
- ◁ ○ ▷ PEDESTRIAN PHASE
- ◁ ○ ▷ OVERLAP

NOTE:  
PUSH BUTTON "B" SHALL PLACE A CALL IN PHASES 4 AND 6

**EXISTING PHASE DESIGNATION DIAGRAM**

**EXISTING EMERGENCY VEHICLE PREEMPTION SEQUENCE**



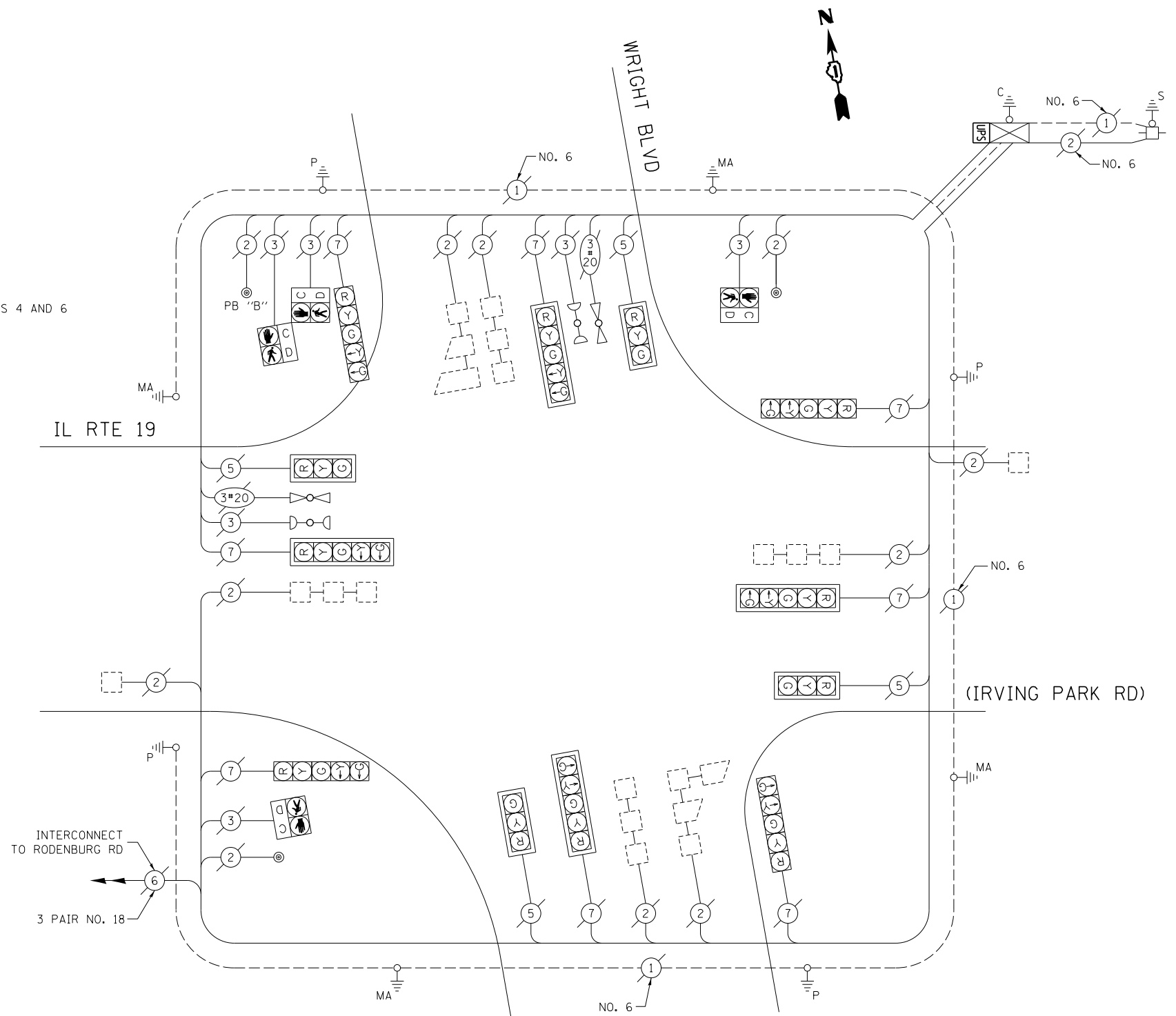
EXISTING EMERGENCY VEHICLE PREEMPTORS		
EMERGENCY VEHICLE PREEMPTOR	3	4
MOVEMENT	—	

I.D.O.T. TRAFFIC SIGNAL INSTALLATION ELECTRICAL SERVICE REQUIREMENTS					TOTAL WATTAGE
TYPE	NO. OF LAMPS	WATTAGE		% OPERATION	
SIGNAL (RED)	12	INCAND.	17	0.50	102.0
(YELLOW)	12		25	0.25	75.0
(GREEN)	12		15	0.25	45.0
ARROW	16		12	0.10	19.2
PED. SIGNAL	4		25	1.00	100.0
CONTROLLER	1		100	1.00	100.0
ILLUM. SIGN	-		25	0.05	-
VIDEO SYSTEM	-		150	1.00	-
FLASHER				0.50	
ENERGY COSTS TO:				TOTAL =	441.2

VILLAGE OF SCHAUMBURG  
101 SCHAUMBURG COURT  
SCHAUMBURG, IL 60193  
ENERGY SUPPLY: CONTACT: DAVE SCHACHT  
PHONE: (630) 437-2129  
COMPANY: COMMONWEALTH EDISON

**SCHEDULE OF QUANTITIES**

ITEM DESCRIPTION	UNIT	TOTAL QTY.
MAINTENANCE OF EXISTING TRAFFIC SIGNAL INSTALLATION	EACH	1
MODIFY EXISTING CONTROLLER CABINET	EACH	1
UNINTERRUPTABLE POWER SUPPLY, SPECIAL	EACH	1



**CABLE PLAN**

(NOT TO SCALE)

FILE NAME =	USER NAME = poc1echal	DESIGNED - IP	REVISED -
es:\pw_work\poc1echal\08381174\012314-sh-t-ts2.dgn		DRAWN - IP	REVISED -
Default	PLOT SCALE = 40.0000' / in.	CHECKED - AW / LP	REVISED -
	PLOT DATE = 5/16/2014	DATE - 5/15/2014	REVISED -

STATE OF ILLINOIS  
DEPARTMENT OF TRANSPORTATION

CABLE PLAN, PHASE DESIGNATION DIAGRAM, EMERGENCY VEHICLE PREEMPTION SEQUENCE, AND SCHEDULE OF QUANTITIES  
IL RTE 19 (IRVING PARK RD) AT WRIGHT BLVD

SCALE: SHEET OF SHEETS STA. TO STA.

F.A. RTE.	SECTION	COUNTY	TOTAL SHEETS	SHEET NO.
--	2014-008T5	COOK	81	55
CONTRACT NO. 60X83				
ILLINOIS FED. AID PROJECT				

TS 7637