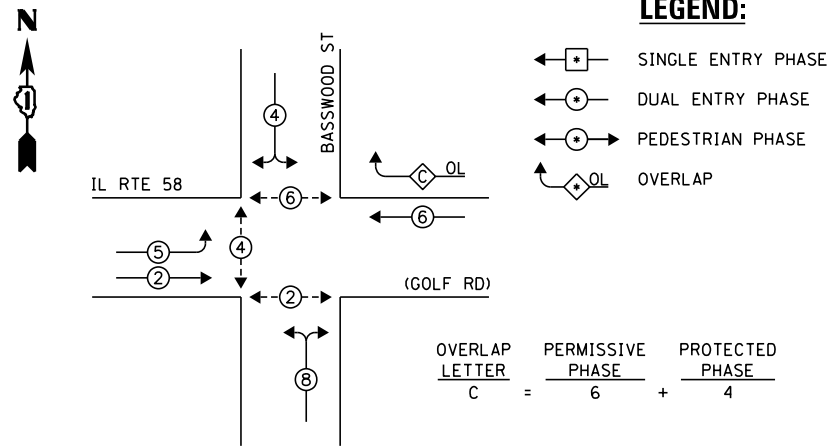


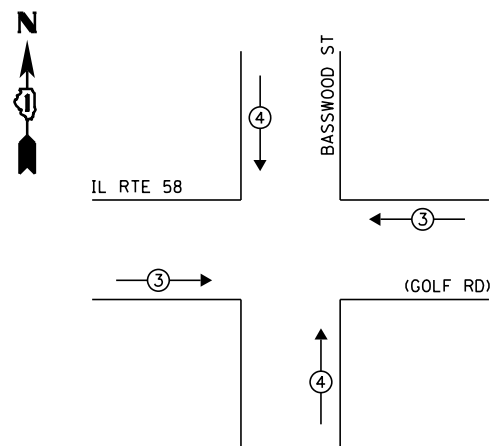
**EXISTING CONTROLLER SEQUENCE**



**RETROFIT ALL EXISTING TRAFFIC SIGNAL HEADS TO L.E.D.**

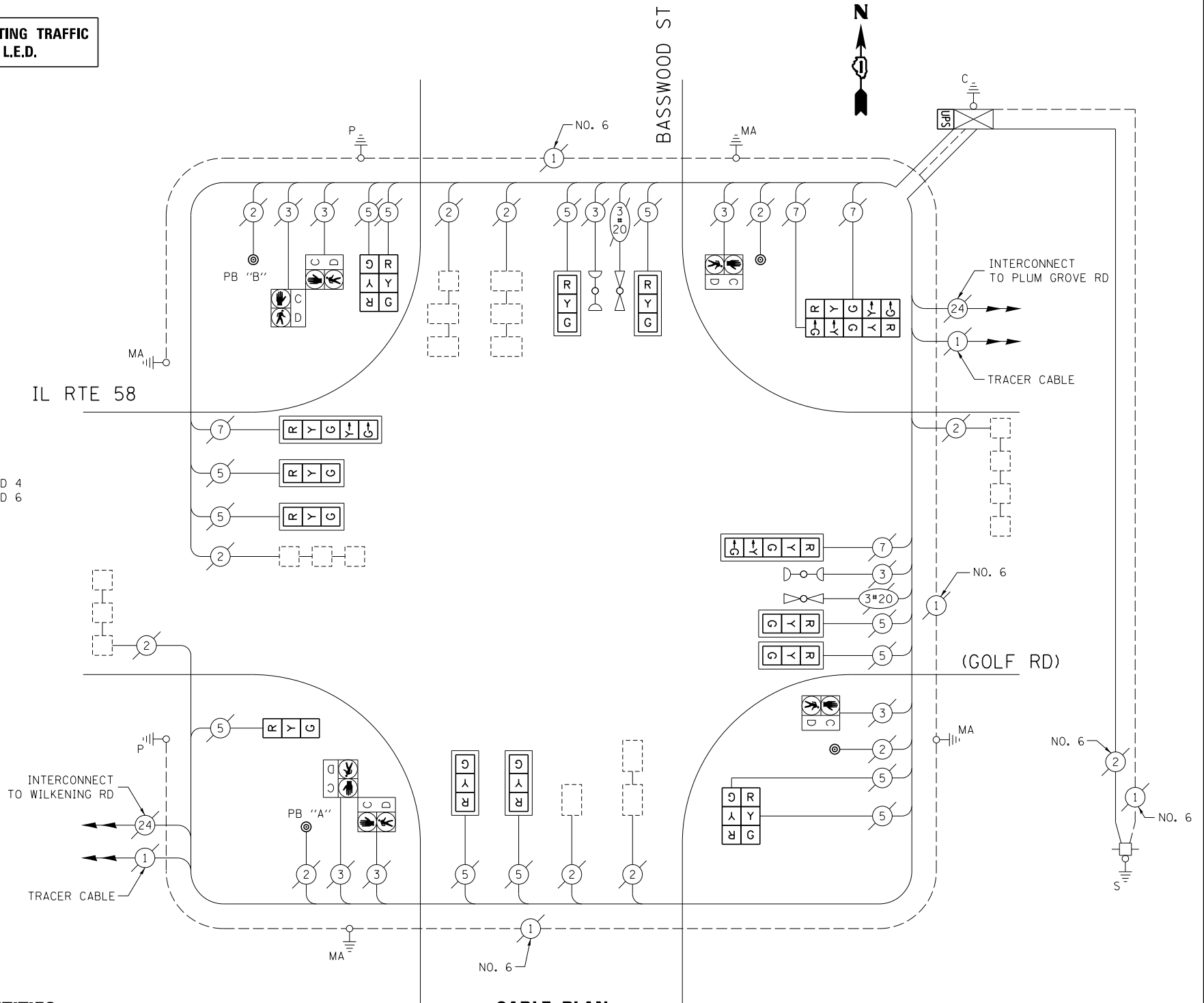
**EXISTING PHASE DESIGNATION DIAGRAM**

**EXISTING EMERGENCY VEHICLE PREEMPTION SEQUENCE**



NOTE:  
PUSH BUTTON "A" SHALL PLACE A CALL IN PHASES 2 AND 4  
PUSH BUTTON "B" SHALL PLACE A CALL IN PHASES 4 AND 6

EXISTING EMERGENCY VEHICLE PREEMPTORS		
EMERGENCY VEHICLE PREEMPTOR	3	4
MOVEMENT	==	



**CABLE PLAN**  
(NOT TO SCALE)

**SCHEDULE OF QUANTITIES**

ITEM DESCRIPTION	UNIT	TOTAL QTY.
MAINTENANCE OF EXISTING TRAFFIC SIGNAL INSTALLATION	EACH	1
MODIFY EXISTING CONTROLLER CABINET	EACH	1
REMOVE EXISTING TRAFFIC SIGNAL EQUIPMENT	EACH	1
UNINTERRUPTABLE POWER SUPPLY, SPECIAL	EACH	1
SIGNAL HEAD, LED, 1-FACE, 3-SECTION, BRACKET MOUNTED, RETROFIT	EACH	1
SIGNAL HEAD, LED, 1-FACE, 3-SECTION, MAST ARM MOUNTED, RETROFIT	EACH	8
SIGNAL HEAD, LED, 1-FACE, 5-SECTION, MAST ARM MOUNTED, RETROFIT	EACH	2
SIGNAL HEAD, LED, 2-FACE, 3-SECTION, BRACKET MOUNTED, RETROFIT	EACH	2
SIGNAL HEAD, LED, 2-FACE, 5-SECTION, BRACKET MOUNTED RETROFIT	EACH	1
PEDESTRIAN PUSH-BUTTON, NON-LATCHING	EACH	4

THE FOLLOWING ITEMS SHALL BE REMOVED BY THE CONTRACTOR AND SHALL BE DISPOSED OF BY THEM OUTSIDE THE RIGHT-OF-WAY AT THEIR EXPENSE. THE SALVAGE VALUE OF THE REMOVED EQUIPMENT SHALL BE REFLECTED IN THE CONTRACT BID PRICE.

4 EACH PEDESTRIAN PUSH-BUTTON

I.D.O.T. TRAFFIC SIGNAL INSTALLATION ELECTRICAL SERVICE REQUIREMENTS					TOTAL WATTAGE
TYPE	NO. OF LAMPS	WATTAGE		% OPERATION	
SIGNAL (RED)	17	INCAND.	LED	0.50	144.5
(YELLOW)	17			0.25	106.25
(GREEN)	17			0.25	63.75
ARROW	8			0.10	9.6
PED. SIGNAL	6			1.00	150.0
CONTROLLER	1			1.00	100.0
ILLUM. SIGN	-			0.05	-
VIDEO SYSTEM	-			1.00	-
FLASHER				0.50	
ENERGY COSTS TO:					TOTAL = 574.1

ILLINOIS DEPARTMENT OF TRANSPORTATION  
DIVISION OF HIGHWAY/DISTRICT 1  
201 WEST CENTER COURT/SCHAUMBURG, ILLINOIS 60196-1096

ENERGY SUPPLY: CONTACT: DAVE SCHACHT  
PHONE: (630) 437-2129  
COMPANY: COMMONWEALTH EDISON

FILE NAME =	USER NAME = pocitechal	DESIGNED - IP	REVISED -
es:\pwwork\pocitechal\08381174\012314-sh-t-ts2.dgn		DRAWN - IP	REVISED -
Default	PLOT SCALE = 40.0000' / in.	CHECKED - AW / LP	REVISED -
	PLOT DATE = 5/16/2014	DATE - 5/15/2014	REVISED -

**STATE OF ILLINOIS  
DEPARTMENT OF TRANSPORTATION**

**CABLE PLAN, PHASE DESIGNATION DIAGRAM, EMERGENCY VEHICLE PREEMPTION SEQUENCE, AND SCHEDULE OF QUANTITIES  
IL RTE 58 (GOLF RD) AT BASSWOOD ST**

SCALE: SHEET OF SHEETS STA. TO STA.

F.A. RTE.	SECTION	COUNTY	TOTAL SHEETS	SHEET NO.
--	2014-008T5	COOK	81	62
CONTRACT NO. 60X83				
ILLINOIS FED. AID PROJECT				

TS 21235