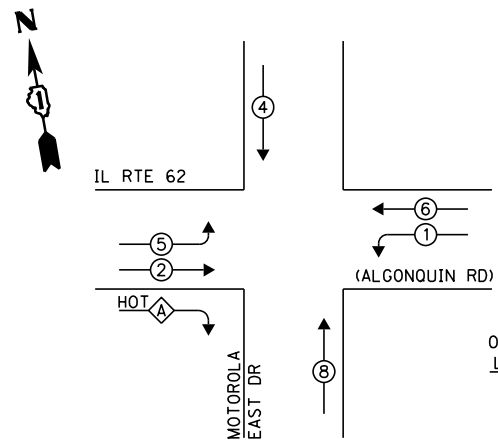
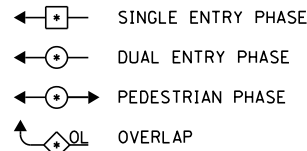


EXISTING CONTROLLER SEQUENCE



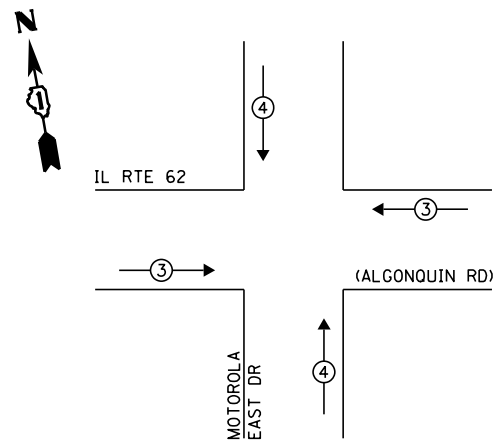
LEGEND:



OVERLAP LETTER A = PERMISSIVE PHASE CONTINUOUS (HOT) PROTECTED PHASE

EXISTING PHASE DESIGNATION DIAGRAM

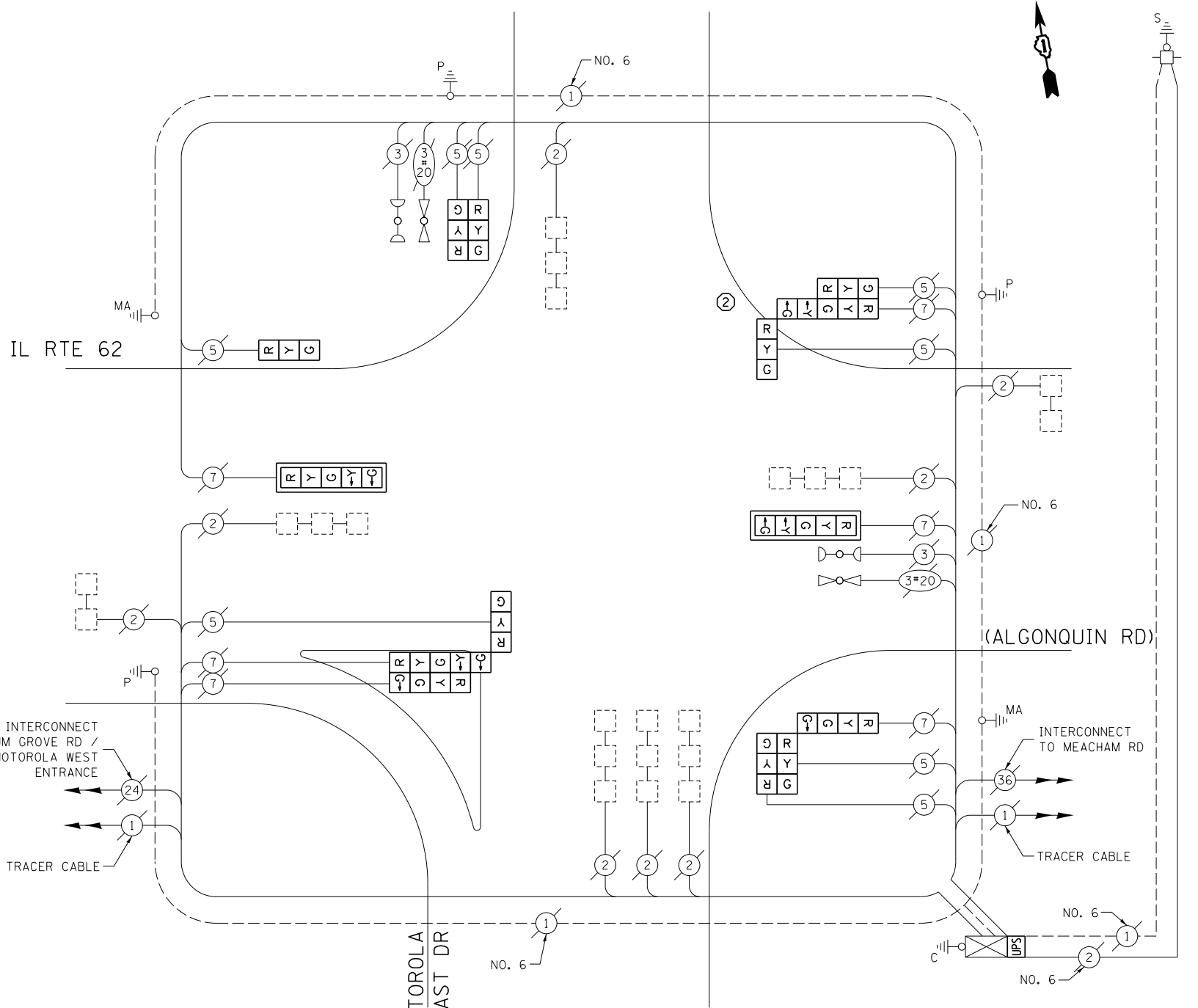
EXISTING EMERGENCY VEHICLE PREEMPTION SEQUENCE



EXISTING EMERGENCY VEHICLE PREEMPTORS		
EMERGENCY VEHICLE PREEMPTOR	3	4
MOVEMENT	—	

② REPLACE 16 FT PAINTED POST. RE-USE EXISTING FOUNDATION.

INTERCONNECT TO PLUM GROVE RD / MOTOROLA WEST ENTRANCE
TRACER CABLE



CABLE PLAN
(NOT TO SCALE)

SCHEDULE OF QUANTITIES

ITEM DESCRIPTION	UNIT	TOTAL QTY.
MAINTENANCE OF EXISTING TRAFFIC SIGNAL INSTALLATION	EACH	1
TRAFFIC SIGNAL POST, GALVANIZED STEEL 16 FT.	EACH	1
SIGNAL HEAD, LED, 3-FACE, 2-3 SECTION, 1-4 SECTION, BRACKET MOUNTED	EACH	1
SIGNAL HEAD, LED, 1-FACE, 3-SECTION, BRACKET MOUNTED	EACH	1
SIGNAL HEAD, LED, 1-FACE, 5-SECTION, MAST-ARM MOUNTED	EACH	2
SIGNAL HEAD, LED, 2-FACE, 3-SECTION, BRACKET MOUNTED	EACH	1
SIGNAL HEAD, LED, 3-FACE, 1-3 SECTION, 1-4 SECTION, 1-5 SECTION BRACKET MOUNTED	EACH	1
SIGNAL HEAD, LED, 3-FACE, 2-3 SECTION, 1-5 SECTION BRACKET MOUNTED	EACH	1
TRAFFIC SIGNAL BACKPLATE, LOUVERED, ALUMINUM	EACH	2
MODIFY EXISTING CONTROLLER CABINET	EACH	1
REMOVE EXISTING TRAFFIC SIGNAL EQUIPMENT	EACH	1
UNINTERRUPTIBLE POWER SUPPLY, SPECIAL	EACH	1
REMOVE AND REPLACE ANCHOR BOLTS	EACH	1

THE FOLLOWING ITEMS SHALL BE REMOVED BY THE CONTRACTOR AND SHALL BE DISPOSED OF BY THEM OUTSIDE THE RIGHT-OF-WAY AT THEIR EXPENSE. THE SALVAGE VALUE OF THE REMOVED EQUIPMENT SHALL BE REFLECTED IN THE CONTRACT BID PRICE.

- 1 EACH TRAFFIC SIGNAL POST
- 8 EACH 3-SECTION SIGNAL HEAD
- 2 EACH 4-SECTION SIGNAL HEAD
- 4 EACH 5-SECTION SIGNAL HEAD
- 2 EACH TRAFFIC SIGNAL BACKPLATE

I.D.O.T. TRAFFIC SIGNAL INSTALLATION ELECTRICAL SERVICE REQUIREMENTS					TOTAL WATTAGE
TYPE	NO. OF LAMPS	WATTAGE		% OPERATION	
SIGNAL (RED)	14	INCAND.	LED	0.50	119.0
(YELLOW)	14			0.25	87.5
(GREEN)	14			0.25	52.5
ARROW	8			0.10	9.6
PED. SIGNAL	-			1.00	-
CONTROLLER	1			1.00	100.0
ILLUM. SIGN	-			0.05	-
VIDEO SYSTEM	-			1.00	-
GREEN (HOT)	1			1.00	15.0
FLASHER	-			0.50	-
ENERGY COSTS TO:				TOTAL =	383.6

VILLAGE OF SCHAUMBURG
101 SCHAUMBURG COURT
SCHAUMBURG, IL 60193

ENERGY SUPPLY: CONTACT: DAVE SCHACHT
PHONE: (630) 437-2129
COMPANY: COMMONWEALTH EDISON

FILE NAME =	USER NAME = pocitech1	DESIGNED - IP	REVISED -
es:\pw_work\pocitech1\d0381174\012314-sh-t-ts2.dgn		DRAWN - IP	REVISED -
Default	PLOT SCALE = 40.0000' / in.	CHECKED - AW / LP	REVISED -
	PLOT DATE = 5/16/2014	DATE - 5/15/2014	REVISED -

STATE OF ILLINOIS
DEPARTMENT OF TRANSPORTATION

CABLE PLAN, PHASE DESIGNATION DIAGRAM, EMERGENCY VEHICLE PREEMPTION SEQUENCE, AND SCHEDULE OF QUANTITIES
IL RTE 62 (ALGONQUIN RD) AT MOTOROLA EAST DR

F.A. RTE.	SECTION	COUNTY	TOTAL SHEETS	SHEET NO.
--	2014-008T5	COOK	81	71
CONTRACT NO. 60X83				
ILLINOIS FED. AID PROJECT				

TS 14755