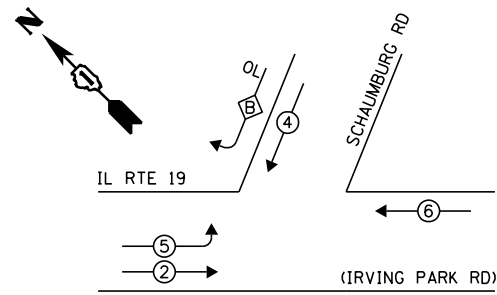


EXISTING CONTROLLER SEQUENCE



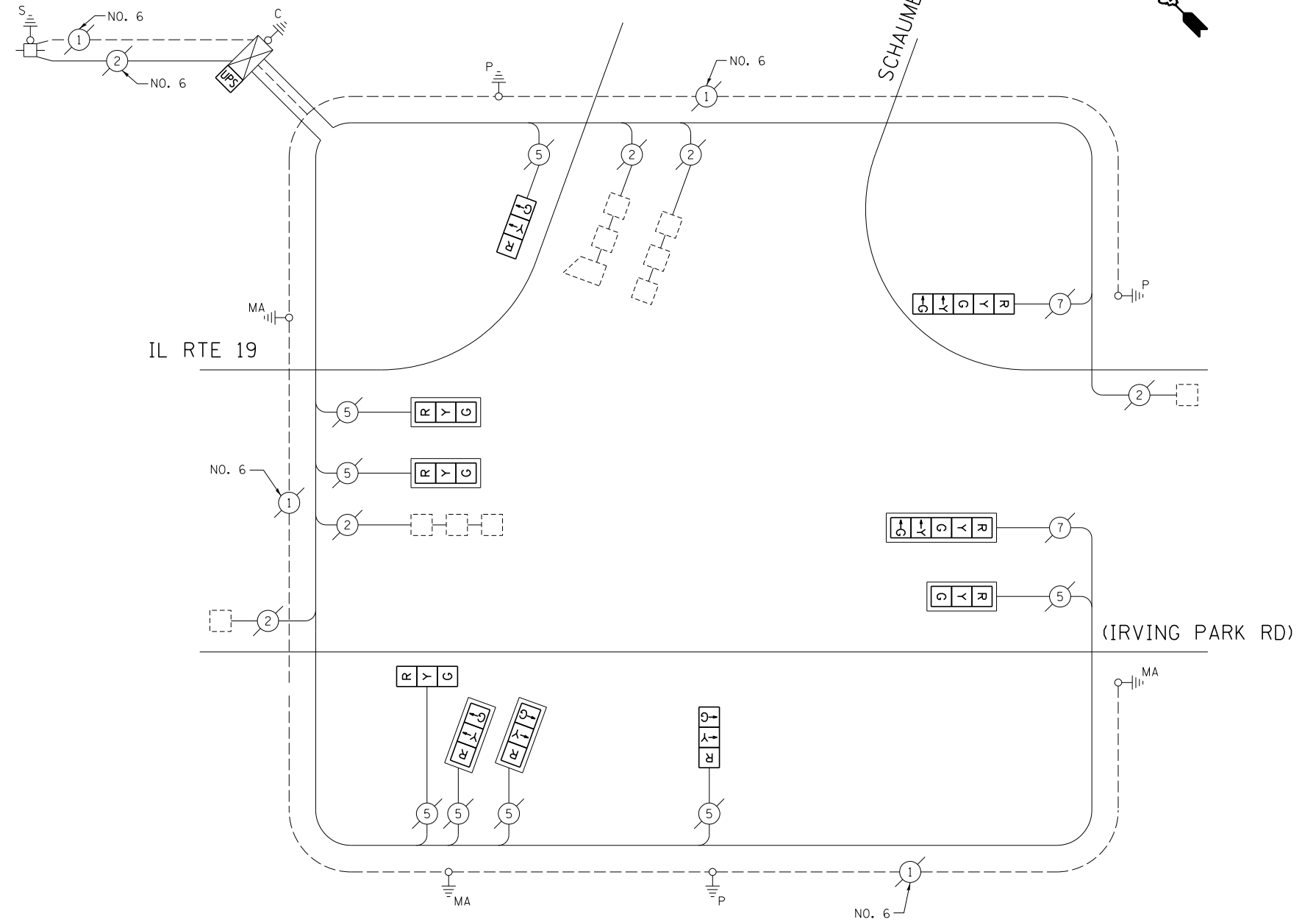
LEGEND:

- ◀◻ SINGLE ENTRY PHASE
- ◀◉ DUAL ENTRY PHASE
- ◀◉ PEDESTRIAN PHASE
- ◀◉ OL OVERLAP

OVERLAP LETTER = PERMISSIVE PHASE + PROTECTED PHASE
 B = 4 + 5

RETROFIT ALL EXISTING TRAFFIC SIGNAL HEADS TO L.E.D.

EXISTING PHASE DESIGNATION DIAGRAM



CABLE PLAN

(NOT TO SCALE)

SCHEDULE OF QUANTITIES

ITEM DESCRIPTION	UNIT	TOTAL QTY.
MAINTENANCE OF EXISTING TRAFFIC SIGNAL INSTALLATION	EACH	1
MODIFY EXISTING CONTROLLER CABINET	EACH	1
UNINTERRUPTABLE POWER SUPPLY, SPECIAL	EACH	1
SIGNAL HEAD, LED, 1-FACE, 3-SECTION, BRACKET MOUNTED, RETROFIT	EACH	3
SIGNAL HEAD, LED, 1-FACE, 3-SECTION, MAST ARM MOUNTED, RETROFIT	EACH	5
SIGNAL HEAD, LED, 1-FACE, 5-SECTION, MAST ARM MOUNTED, RETROFIT	EACH	1
SIGNAL HEAD, LED, 1-FACE, 5-SECTION, BRACKET MOUNTED, RETROFIT	EACH	1

I.D.O.T. TRAFFIC SIGNAL INSTALLATION ELECTRICAL SERVICE REQUIREMENTS					TOTAL WATTAGE
TYPE	NO. OF LAMPS	WATTAGE		% OPERATION	
SIGNAL (RED)	10	INCAND.	LED	0.50	85.0
(YELLOW)	10		25	0.25	62.5
(GREEN)	10		15	0.25	37.5
ARROW	4		12	0.10	4.8
PED. SIGNAL	-		25	1.00	-
CONTROLLER	1		100	1.00	100.0
ILLUM. SIGN	-		25	0.05	-
VIDEO SYSTEM	-		150	1.00	-
FLASHER	-		25	0.50	-
ENERGY COSTS TO:	TOTAL =				289.8

ILLINOIS DEPARTMENT OF TRANSPORTATION
 DIVISION OF HIGHWAY/DISTRICT 1
 201 WEST CENTER COURT/SCHAUMBURG, ILLINOIS 60196-1096
 ENERGY SUPPLY: CONTACT: JOE STACHO
 PHONE: (630) 424-5704
 COMPANY: COMMONWEALTH EDISON

FILE NAME =	USER NAME = poc1echn	DESIGNED - IP	REVISED -
et:\pwork\p1dot\poc1echn\0831174\012314-sh-t-ts3.dgn		DRAWN - IP	REVISED -
Default	PLOT SCALE = 40.0000' / in.	CHECKED - AW / LP	REVISED -
	PLOT DATE = 5/16/2014	DATE - 5/15/2014	REVISED -

STATE OF ILLINOIS
 DEPARTMENT OF TRANSPORTATION

CABLE PLAN, PHASE DESIGNATION DIAGRAM,
 AND SCHEDULE OF QUANTITIES
 IL RTE 19 (IRVING PARK RD) AT SCHAUMBURG RD

SCALE: SHEET OF SHEETS STA. TO STA.

F.A. RTE.	SECTION	COUNTY	TOTAL SHEETS	SHEET NO.
--	2014-008T5	COOK	81	78
CONTRACT NO. 60X83				
ILLINOIS FED. AID PROJECT				

TS 744